

---

---

# **Bureau of Economic and Business Research Annual Report 2001-2002**

---

---

**July 2002**

**Bureau of Economic and Business Research  
221 Matherly Hall  
P.O. Box 117145  
University of Florida  
Gainesville, FL 32611-7145  
Telephone: 352-392-0171  
Fax: 352-392-4739  
Web Site: [www.bebr.ufl.edu](http://www.bebr.ufl.edu)**



**UNIVERSITY OF  
FLORIDA**

---

---

## **Staff members, Bureau of Economic and Business Research July 2002**

**Director:** Stanley K. Smith, Ph.D., Professor and Program Director

**Forecasting Program:**

Carol T. West, Ph.D., Professor and Program Director

David G. Lenze, Ph.D., Associate Program Director

**Policy Studies Program:**

David A. Denslow, Ph.D., Professor and Program Director

James F. (Jim) Dewey, Ph.D.

Eve Irwin, B.A.

**Population Program:**

Stanley K. Smith, Ph.D., Professor and Program Director

Scott Cody, M.B.A.

June Nogle, Ph.D.

**Survey Program:**

Chris McCarty, Ph.D., Program Director

Scott Richards, M.A.

Alicia Turner

**Information/Publication Services:**

Susan Floyd, M.A., Program Director

Carol Griffen, B.S.

Dorothy Evans

**Administrative Services and Information Technology:**

Clinton B. Collins, B.S., Program Director

Georgia S. Baldwin, B.S.

Balaji Krishnaprasad, M.S.

Janet Fletcher

Pamela Middleton

Janet Rose, A.A.

---

---

## **Bureau of Economic and Business Research Annual Report 2001-2002**

### **About the BEBR**

Founded in 1929, the Bureau of Economic and Business Research (BEBR) is an applied research center in the Warrington College of Business Administration at the University of Florida. Its primary missions are to: 1) Collect, analyze, and generate economic and demographic data for Florida and its local areas; 2) Conduct economic, demographic, and public policy research on topics of particular importance to the state of Florida; and 3) Distribute data and research findings throughout the state and the nation. BEBR seeks to conduct research that is both academically sound and directly relevant to public and private decision makers in Florida.

BEBR plays a number of roles within the College and the University. Its research contributes to a deeper understanding of Florida's rapidly changing economic and demographic climate. It provides employment and training for numerous graduate students and more than 200 undergraduate students each year. It generates revenues by selling data and publications and by obtaining research contracts and grants. It creates favorable publicity for the College and University through its publications, presentations, and reference services. Its staff members teach several courses each year in the Economics Department, and occasionally in other departments as well. BEBR activities fall within the University's traditional functions of teaching, research, and service, but the impact of those activities carries far beyond campus boundaries.

### **The Year in Review**

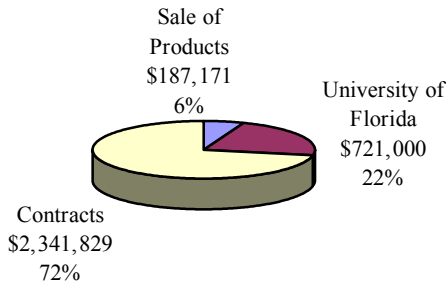
BEBR had another good year in 2001-2002. Staff members served as principle investigators on 25 research contracts; published 22 articles, technical reports, books, or book chapters; presented nine papers at professional conferences; made 13 presentations to business/civic/government groups throughout the state; held leadership positions in a variety of professional organizations; and taught four courses in the Economics Department and one in the Anthropology Department. They responded to more than 600 information requests each month from businesses, government agencies, the media, and members of the general public. BEBR continues to be a major source of data and analysis regarding business, economic, and demographic conditions and trends in Florida.

Total revenues for 2001-2002 were \$3,250,000, the most in BEBR history. This increase was caused primarily by additional revenues from research contracts, which rose to over \$2.3 million. Research contracts accounted for 72% of the BEBR's total revenue for the year, the sale of data and publications accounted for 6%, and University salaries accounted for 22% (see Figure 1). Expenditures also increased considerably, reflecting the higher costs associated with the additional research contracts. About 80% of expenditures were for wages and salaries

---

---

**Figure 1. Estimated Revenues 2001-2002  
(preliminary): \$3,250,000**



(including almost \$1 million for supervisors and interviewers working part-time for the Survey Program), with the remainder going for computer equipment, software licenses, telephone bills, travel, postage, office supplies, and other expenses.

The **Forecasting Program** completed the fourth year of a cooperative arrangement with the Agency for Workforce Innovation. This arrangement eliminates overlap in economic forecasts and provides increased breadth and depth for long-term forecasts of Florida and its 20 metropolitan areas and 67 counties. During the year, the Forecasting Program incorporated new regional data from the 2000 census into its models and databases, and revised data series for the 1990s to be consistent with the new benchmarks. The events of September 11, 2001 had a substantial short-term impact on the economy of Florida, but do not appear to have affected the long-term outlook for the state.

Scholarly research from the Forecasting Program was published in the *Journal of Agriculture and Applied Economics* and presented at several professional conferences. The Program's forecasts were presented at public forums throughout the state. Carol West served on the Governor's Council of Economic Advisors, the Expert Review Board on Mitigating the Cost of Natural Disasters, and the editorial boards of two scholarly journals. She was awarded the 2001 Walter Isard Award for Distinguished Scholarly Achievement in Regional Science. David Lenze updated an economic impact study for NASA and collaborated with the Policy Studies Program on a study of the optimal use of Florida's railways and highways.

The Forecasting Program has been producing forecasts and economic analyses for Florida and its local areas since the mid-1970s. Unfortunately, the contract funding the program was not renewed for the coming year. As a result, the program will cease operation upon completion of the current set of forecasts. Carol West (who is currently on sabbatical) will continue her work as Director of UF's Center for International Business Education Research and as a professor in the Economics Department; she will work with BEBR on projects of mutual interest. David Lenze will shift to the Policy Studies Program, where he will work on a variety of economic and public policy projects. The Forecasting Program made significant contributions to

economic research and analysis over the years, but the coming reorganization opens up several exciting opportunities for pursuing new lines of research.

The **Policy Studies Program** received two research contracts from the Florida Department of Transportation and one from the Florida Department of Education during the past year. Its research focused on spatial price indexes, transportation, and urban form. The price indexes are used in the State of Florida's formula for distributing state funds among school districts. Staff members produced reports on *Florida Transportation Trends and Conditions* and *The 2001 Florida Price Level Index*. They made a number of presentations on this research and general economic trends in Florida to a variety of business/civic/government groups throughout the state. David Denslow served as a member of Florida's Post-Secondary Education Finance Task Force and the Trends and Conditions Group of the Florida Department of Transportation.

The **Population Program** incorporated the results of the 2000 census into its new population estimates and projections. Staff members produced population estimates for all cities and counties in Florida and population projections by age, sex, and race for the state and each county. They also used 2000 census results to evaluate previous population estimates and projections. The 2000 estimates were the most accurate BEBR has ever produced, with errors that averaged 4% for counties and 10% for subcounty areas. BEBR's estimates for cities and counties in Florida were found to be considerably more accurate than those produced by the U.S. Census Bureau. The Population Program also developed and evaluated a methodology for estimating the Hispanic population of Florida and each of its counties.

Staff members in the Population Program authored four technical reports on the Florida population, co-authored a book on foreign immigration in Florida, wrote two short articles for the *International Encyclopedia of Population*, published articles in *Demography* and *Applied Demography*, made six presentations to business/civic/government groups throughout the state, presented four papers at professional conferences, and refereed an article for a scholarly journal. Stan Smith served as chair of the Population Association of America's Committee on Applied Demography and as a member of the U.S. Census Bureau Advisory Committee. June Nogle served as Secretary/Treasurer of the Southern Demographic Association, chair of the Federal-State Cooperative Program for Population Estimates, and co-editor of the *Applied Demography* newsletter.

The **Survey Program** completed the relocation of its facilities from Matherly Hall to the Seagle Building in downtown Gainesville. This move was made necessary by the rapid growth of the program during the last few years and the lack of available space on campus. Now called the UF Survey Research Center, this facility has 70 Computer Aided Telephony Integration (CATI) stations, a new file server, and a new telephone system. One of the main features of the new telephone system is the ability to record up to four conversations simultaneously; this has helped ensure quality control and provided clients with the opportunity to hear their questions being asked. The Survey Program also made several changes to its operation and management procedures in order to keep pace with the expansion of the infrastructure. Chris McCarty published an article in the *Journal of Social Structure*, made presentations at two professional conferences, and refereed articles for two scholarly journals.

The Survey Program conducted 19 funded surveys during the past year, generating more than \$1.6 million in gross revenues. Clients included faculty members at UF and other universities, government agencies in Florida and other states, and several private enterprises. Healthcare issues such as insurance coverage and satisfaction with healthcare programs were once again a major research focus. Among other uses, survey results were used by state officials as a basis for allocating funds to children's healthcare programs in Florida. The Survey Program provided employment and training in interviewing, management, and data analysis to several graduate students and more than 200 undergraduate students.

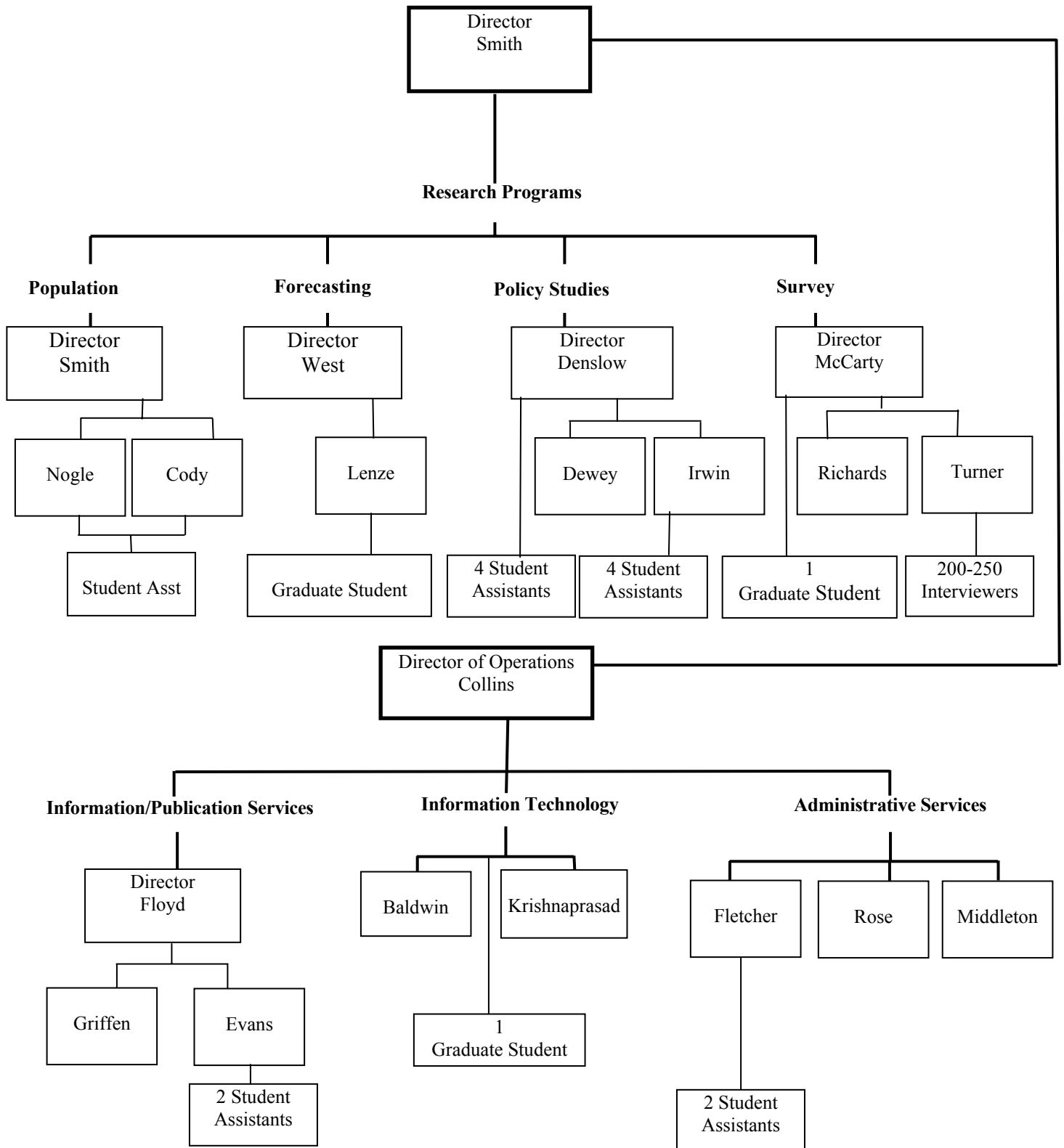
The **Information and Publications Services Program** published four annual statistical volumes and five monthly or annual serial reports during the past year: *Florida and the Nation*, *Florida Statistical Abstract*, *Florida County Rankings*, *Florida County Perspectives*, *Housing Starts and Permits*, *Building Permit Activity Reports*, *Gross and Taxable Sales*, *Economic Impact of NASA on Central Florida*, and *The Florida Price Level Index*. Additionally, it published a new report on immigration, *Facts About Immigration and Asking "Six Big Questions" for Florida and Miami-Dade County*. Responding to the University's call for a more global UF, the program added a new "International comparisons" chapter to *Florida and the Nation* comparing Florida to the United States and other countries. Similar chapters are planned for both the *Florida Statistical Abstract* and *Florida County Rankings* in 2002. Staff members also provided editorial and publication support to other BEBR programs throughout the year.

Staff members in the Information and Publications Services Program responded to approximately 500 telephone and e-mail requests for information each month, directed the marketing efforts for all BEBR publications, provided press releases to news agencies, maintained the BEBR web site, participated in UF's public relations award program, made presentations at seminars and conferences, and participated in the UF Communication Network (UFCN). Susan Floyd served on the board of directors for the Association for University Business and Economic Research (AUBER). She directed the Editors' sessions and made presentations at two other sessions at the Fall 2001 AUBER conference. Carol Griffen and Dot Evans were recognized as University of Florida Superior Accomplishment Award recipients for outstanding performance during the year.

The **Administrative Services and Information Technology (IT) Programs** provided the background support that held BEBR together. Administrative staff members managed the BEBR budget, tracked revenues and expenditures, maintained personnel files and appointments, handled orders and shipments of BEBR publications, provided oversight for compliance with University rules and regulations, and performed many other essential office tasks. The expansion of the Survey Program created additional work for the administrative staff, requiring the processing of a much larger number of employee appointments and payroll records. Staff members did an excellent job responding to these demands and finding new ways to make the BEBR operate more smoothly and efficiently. They also greatly increased the number of flyers sent out to advertise BEBR programs and publications. The IT Program purchased and installed new equipment and software, provided technical support for all computer and network programs, and maintained and upgraded the BEBR database. Balaji Krishnaprasad joined the IT staff and will be working on developing and maintaining the BEBR web site. Plans for the coming year include the development of new accounting procedures for tracking revenues and expenditures.

BEBR currently employs twenty full-time staff members and a large number of graduate and undergraduate students (see Figure 2). This report provides a quick overview and summary of BEBR's activities and output during the past year. For additional information on our products, services, and research activities, check out our web site at [www.bibr.ufl.edu](http://www.bibr.ufl.edu) or give us a call at (352) 392-0171.

**Figure 2. Organizational Chart, BEBR  
July 2002**



---

---

## Table 1. Publications, 2001-2002

### Dewey, Jim and David Denslow

“2001 Florida Price Level Index,” report prepared for the Florida Department of Education, January 2001. Available online at [www.firn.edu/doe/bin00047](http://www.firn.edu/doe/bin00047).

“2001 Florida Price Level Index: Supporting Information in Spreadsheet Format,” report prepared for the Florida Department of Education, January 2001. Available online at [www.bibr.ufl.edu](http://www.bibr.ufl.edu).

“Florida Transportation Trends and Conditions,” report prepared for the Florida Department of Transportation, March 2002, revised June 2002. Available online at [www.bibr.ufl.edu](http://www.bibr.ufl.edu).

### Evans, Dorothy A.

*Florida County Perspective, 2001*. BEBR, University of Florida, February 2002.

### Floyd, Susan and Dorothy A. Evans

*Florida Statistical Abstract, 2001*. BEBR, University of Florida, November 2001.

### Floyd, Susan, Carol Griffen and Dorothy A. Evans

*Florida County Rankings, 2001*. BEBR, University of Florida, December 2001.

*Florida and the Nation, 2002*. BEBR, University of Florida, April 2002.

### Lenze, David

“Economic Impact of NASA on Central Florida, 2001: Final Report,” report prepared for Kennedy Space Center, February 2002.

“Economic Impact of NASA on Central Florida, 2001: Methodological Supplement,” report prepared for Kennedy Space Center, February 2002. Electronic format only.

### McCarty, Chris

“Structure in Personal Networks,” *Journal of Social Structure*, Vol. 3, No. 1, March 2002.

---

---

**Table 1. Publications, 2001-2002**  
(continued)

**Nogle, June**

*Facts About Immigration and Asking Six Big Questions for Florida and Miami-Dade County.* BEBR, University of Florida, November 2001 (with Thomas D. Boswell, Rob Paral, and Richard Langendorf).

**Smith, Stanley K.**

“Population Projections for Small Areas: New Directions in the 21<sup>st</sup> Century,” *Applied Demography*, Vol. 14, No. 4, 2002 (with David Swanson and Jeff Tayman).

“Small-Area Demography,” *International Encyclopedia of Population*, MacMillen Reference, forthcoming 2002.

“Business Demography,” *International Encyclopedia of Population*, MacMillen Reference, forthcoming 2002 (with Peter Morrison).

**Smith, Stanley K. and Scott Cody**

“Number of Households and Average Household Size in Florida: April 1, 2001,” *Florida Population Studies*, Bulletin 131 BEBR, University of Florida, January 2002.

**Smith, Stanley K. and June Nogle**

“Population Projections by Age, Sex and Race for Florida and its Counties, 2000-2020,” *Florida Population Studies*, Bulletin 130, BEBR, University of Florida, October 2001.

“Projections of Florida Population by County, 2001-2030,” *Florida Population Studies*, Bulletin 132, BEBR, University of Florida, February 2002.

**Smith, Stanley K., June Nogle and Scott Cody**

“A Regression Approach to Estimating the Average Number of Persons per Household,” *Demography*, forthcoming 2002.

*Florida Estimates of Population 2001.* BEBR, University of Florida, January 2002.

---

---

**Table 1. Publications, 2001-2002**  
**(continued)**

**West, Carol**

“Structural Regional Factors that Determine Absolute and Relative Accuracy of Regional Labor Market Forecasts,” *Journal of Agricultural and Applied Economics*, forthcoming.

**West, Carol and David Lenze**

*The Florida Long-Term Economic Forecast Vol. 1, State and MSAs.* BEBR, University of Florida, September 2001.

*The Florida Long-Term Economic Forecast Vol. 2, State and Counties.* BEBR, University of Florida, September 2001.

---

---

**Table 2. Papers Presented at Academic/Professional Conferences, 2001-2002****Lenze, David**

“Economic and Demographic Determinants of Average Household Size: A Regional Analysis,” 48<sup>th</sup> North American Meeting of the Regional Science Association International, Charleston, South Carolina, November 2001.

“Today’s Labor Market in Perspective,” University Career Centers’ Directors Meeting, Gainesville, March 2002.

**McCarty, Chris**

“Does Network Size Matter?” International Sunbelt Social Networks Conference, New Orleans, February 2002.

“Centrality in Egocentric Networks,” International Sunbelt Social Networks Conference, New Orleans, February 2002.

**Nogle, June**

“Population Size and Geographic Distribution of the Elderly in Florida,” annual meeting of the Southern Demographic Association, Miami Beach, October 2001.

“Overview of Immigration Issues in Florida,” Florida History Conference, Tallahassee, February 2002.

**Smith, Stanley K.**

“A Regression Approach to Estimating the Average Number of Persons Per Household,” annual meeting of the Southern Demographic Association, Miami Beach, October 2001 (with June Nogle and Scott Cody).

**West, Carol T.**

“Educating to Meet the Demands of Florida Business and Law Schools,” 2<sup>nd</sup> Legal and Policy Issues in the Americas Symposium at the University of Law School, Gainesville, April 2001.

“Accuracy of Regional Forecasts,” annual meeting of the North American Regional Science Association, Charleston, November 2001.

---

---

**Table 3. Presentations to Business/Civic/Government Groups, 2001-2002****Denslow, David**

“The DCD and Other Components of the FEFP,” Florida Task Force for School Finance Reform, Tallahassee, August 2001.

“The Economic Outlook,” Gainesville Rotary, Gainesville, September 2001.

“Outlook for Financial Markets,” GAIFA, Gainesville, January 2002.

“Outlook for Capital Markets,” Siventures, Fort Myers, January 2002.

“The Economies of Central Asia,” Retired Faculty, Gainesville, February 2002.

“Economic Outlook,” DIS Advisory Council, Gainesville, March 2002.

**Dewey, Jim**

“The DCD and Other Components of the FEFP,” Florida Task Force for School Finance Reform, Tallahassee, August 2001.

**Floyd, Susan**

“Drafting Tables to Replicators,” Association for University Business and Economic Research, 2001 Fall Conference, Gulfport, MS, October 2001.

**Nogle, June**

“Population Projections by BEBR,” Florida Department of Transportation, Land Use Modeling Training, Jacksonville, May 2001.

“Implications of Census Results,” Florida Government Finance Officers Association, Annual Meeting, Ft. Lauderdale, May 2001.

“BEBR and the 2000 Census,” Alachua County Library Association, Gainesville, May 2001.

“Update on the 2000 Census Data and BEBR Population Projections,” Tampa Bay Transportation Planning Applications Group, Tampa, August 2001.

---

---

**Table 3. Presentations to University/Business/Civic Groups, 2001-2002**  
(continued)

**Smith, Stanley K.**

“Florida Population: Where We’ve Been and Where We’re Going,” UF Retired Faculty, Gainesville, October 2001.

“Population Estimates in Florida: Methodology and Evaluation,” Miami-Dade City and County Management Association, Miami Beach, October 2001.

---

---

**Table 4. Professional Service, 2001-2002**

**Denslow, David**

Member, Post-Secondary Education Finance Task Force, State of Florida.

Member, Trends and Conditions Group, Florida Department of Transportation.

**Floyd, Susan**

Board of Directors, Association for University Business and Economic Research (AUBER).

Program and Session chair, annual meeting of the AUBER.

**Nogle, June**

Secretary-Treasurer, Southern Demographic Association.

Newsletter Co-Editor, *Applied Demography*.

Chair, Federal-State Cooperative Program for Population Estimates.

**Smith, Stanley K.**

Member, Committee on Applied Demography, Population Association of America.

Member, Census Advisory Committee of Professional Associations.

Session chair, annual meeting of the Southern Demographic Association.

**West, Carol**

Member of Editorial Board, *International Regional Science Review*.

Member of Editorial Board, *Journal of Regional Science*.

Member, Governor's Council of Economic Advisors, State of Florida.

Member, Expert Review Board on Mitigating the Cost of Natural Disasters, State of Florida.

---



---

**Table 5. Contracts and Grants Awarded, 2001-2002\***

**Dewey, Jim**

|  |          |
|--|----------|
| “Demographic and Economic Trends,” Florida Department of Transportation                  | \$87,500 |
| “Analysis of Freight Movement Mode Choice Factors,” Florida Department of Transportation | \$78,776 |
| “2001 Florida Price of Living Index,” Florida Department of Education                    | \$42,658 |

**Lenze, David**

|  |          |
|--|----------|
| “Economic Impact of NASA on Central Florida,” NASA | \$14,661 |
|--|----------|

**McCarty, Chris**

|   |                 |
|---|-----------------|
| Africare                                      | 742             |
| Florida Agency for Health Care Administration | 206,756         |
| Florida Agency for Health Care Administration | 17,408          |
| Florida Department of Education               | 37,076          |
| Florida Department of Elder Affairs           | 4,000           |
| Florida Department of Health                  | 8,800           |
| Florida Medicaid Center                       | 81,000          |
| Florida Public Service Commission             | 10,000          |
| FSU/Florida Department of Health              | 97,000          |
| Health Management Associates                  | 24,000          |
| Kansas Health Institute                       | 100,000         |
| UF College of Dentistry                       | 21,000          |
| UF Department of Anthropology                 | 18,000          |
| UF Department of Forestry                     | 586             |
| UF Department of Parks and Recreation         | 48,000          |
| UF Department of Parks and Recreation         | 20,000          |
| UF-IFAS                                       | 55,000          |
| UF Institute for Child Health Policy          | 817,260         |
| Visit Florida                                 | 9,531           |
| <br>Total                                     | <br>\$1,576,159 |

**Smith, Stanley K.**

|   |           |
|---|-----------|
| “Population Research Contract,” Florida Legislature | \$266,813 |
|---|-----------|

---

---

**Table 5. Contracts and Grants Awarded, 2001-2002\***  
(continued)

**West, Carol T.**

|  |           |
|--|-----------|
| “Florida Long-Run Economic Forecasting Model,” Agency for<br>Workforce Innovation, State of Florida. | \$180,000 |
|--|-----------|

|              |                    |
|--------------|--------------------|
| <b>TOTAL</b> | <b>\$2,246,567</b> |
|--------------|--------------------|

\*Note: These were contracts and grants awarded during the 2001-2002 fiscal year. Not all payments were received during the fiscal year.

---

---

**Table 6. Courses Taught, 2001-2002**

**Denslow, David A.**

|           |          |                      |           |               |
|-----------|----------|----------------------|-----------|---------------|
| Summer 01 | ECO 2013 | Intro Macroeconomics | 3 credits | 300 students  |
| Fall 01   | ECO 2013 | Intro Macroeconomics | 3 credits | 2000 students |
| Spring 02 | ECO 2013 | Intro Macroeconomics | 3 credits | 900 students  |

**McCarty, Chris**

|         |         |                         |           |             |
|---------|---------|-------------------------|-----------|-------------|
| Fall 01 | ANT6930 | Social Network Analysis | 3 credits | 12 students |
|---------|---------|-------------------------|-----------|-------------|

**Smith, Stanley K.**

|         |          |                      |           |             |
|---------|----------|----------------------|-----------|-------------|
| Fall 01 | ECP 3113 | Population Economics | 4 credits | 31 students |
|---------|----------|----------------------|-----------|-------------|