
**Bureau of Economic and Business Research
Annual Report 2007-2008**

July 2008

**Bureau of Economic and Business Research
221 Matherly Hall
P.O. Box 117145
University of Florida
Gainesville, FL 32611-7145
Telephone: 352-392-0171
Fax: 352-392-4739
Web Site: www.bebr.ufl.edu**

UF | UNIVERSITY *of*
FLORIDA
The Foundation for The Gator Nation

**Staff members, Bureau of Economic and Business Research
July 2008**

Director:

Stanley Smith, Ph.D., Professor and Program Director

Operations Programs

Administrative Services:

Clint Collins, B.S., Program Director

Janet Fletcher

Paula Ivey

Pamela Middleton

Information Technology:

Clint Collins, B.S., Program Director

Eric Lavigne, M.S.

Martin Smith, B.S.

Geoff Stewart, A.A.

Information/Publications Services:

Susan Floyd, M.A., Program Director

Eve Irwin, B.A.

Phoebe Wilson, A.A.

Research Programs

Economic Analysis:

James (Jim) Dewey, Ph.D., Program Director

David Denslow, Ph.D., Professor of Economics

Babak (Bob) Lotfinia, B.A.

Lynne Holt, Ph.D. (part-time)

Population:

Stanley Smith, Ph.D., Professor and Program Director

Scott Cody, M.B.A.

Stefan Rayer, Ph.D.

Survey:

Chris McCarty, Ph.D., Professor and Program Director

Mark Girson, B.S.

Scott Richards, M.A.

Joel Montero, A.A.

Armando Padilla, A.A.

Bureau of Economic and Business Research Annual Report 2007-2008

About the BEBR

Founded in 1929, the Bureau of Economic and Business Research (BEBR) is an applied research center in the Warrington College of Business Administration at the University of Florida (UF). Its primary missions are to: 1) Produce, collect, and tabulate economic and demographic data for Florida and its local areas; 2) Conduct economic, demographic, and public policy research on topics of particular importance to the state of Florida; and 3) Distribute data and research findings throughout the state and the nation. BEBR seeks to conduct research that is both academically sound and directly relevant to public and private decision makers in Florida.

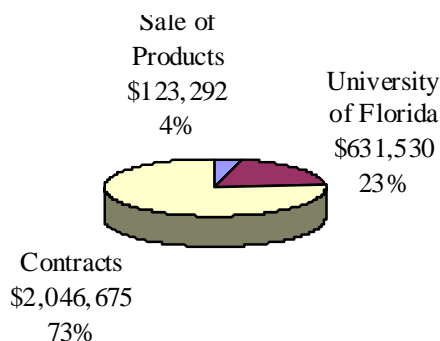
BEBR plays a number of roles within the state, the college, and the university. It conducts research that helps decision makers understand Florida's rapidly changing economic and demographic climate. It provides employment and training for numerous graduate students and more than 300 undergraduate students and part-time employees each year. It generates revenues by obtaining research contracts and grants and by selling data and publications. It creates favorable publicity for the college and the university through its publications, presentations, reference services, and contributions to public policy. Its staff members teach several courses each year. BEBR activities thus fall within the university's traditional functions of teaching, research, and service, but the impact of those activities spreads far beyond campus boundaries.

The Year in Review

BEBR staff members were very active in 2007-2008, serving as principal investigators on research contracts with 28 agencies, generating more than \$2 million in total revenue; writing 10 articles accepted for publication in scholarly journals; publishing three articles in *Florida Focus*, two reports for the Florida Legislature, one book chapter, and 11 technical reports or data compilations; presenting nine papers at professional conferences; serving on 23 university, professional, or civic boards and committees; teaching nine courses (with more than 3,300 students) in academic departments; making 13 presentations to civic groups throughout the state; and responding to more than 3,000 requests for information from businesses, government agencies, the media, and members of the general public. These activities helped solidify BEBR's national reputation as an innovative and productive applied research center and a leading source of socioeconomic and demographic data for the state of Florida.

The **Population Program** made population estimates for all cities and counties in Florida; estimates of households and average household size for the state and each county; and population projections by age, sex, race, and Hispanic origin for the state and each county. These estimates and projections are used for a variety of planning and budgeting purposes, including the distribution of funds through the state's revenue-sharing program. Staff members also conducted research on a variety of demographic topics, provided data to the U.S. Census Bureau, and responded to requests for demographic data and analysis from state and local government officials, business leaders, university researchers, members of the media, and the general public.

**Figure 1. Estimated Revenues 2007-2008
(preliminary): \$2,801,497**



Stan Smith, director of the Population Program, had articles accepted for publication in *Demography* and the *Journal of the American Planning Association*, one co-authored with Chris McCarty and the other co-authored with Stefan Rayer and Eleanor Smith. Rayer had an article accepted for publication in the *Journal of Planning Education and Research*. Smith reviewed four manuscripts for scholarly publications; presented a paper and chaired two sessions at professional conferences; taught a course on population economics; served on the National Research Council's Panel on the Design of the 2010 Census Program of Evaluations and Experiments; and was a member of the U.S. Census Bureau's population estimation review and evaluation committee. Smith and Scott Cody served as Florida's representatives to the Federal-State Cooperative Programs for Population Estimates, and Smith and Rayer served as Florida's representatives to the Federal-State Cooperative Program for Population Projections.

The **Survey Program** had another productive year, both in terms of generating revenues through contracts and grants and making a variety of improvements to the operation of the survey lab. Surveys were conducted for several UF colleges including Business Administration, Education, and Law; research centers including the UF Institute for Child Health Policy; state agencies including the Agency for Health Care Administration, Department of Children and Families and Department of Transportation; and outside organizations including the Kaiser Family Foundation and RAND Corporation. Overall, the program conducted 55 surveys and produced more than 60,000 completed interviews.

The Survey Program also continued its development of the "Scheduler" lab management software program. This Java-based program is built around Wincati, a computer program licensed for survey sample management. Over the past year two critical modules were added, one for real-time budgeting and the other for monitoring attendance. Staff members also made improvements to existing modules that schedule interviewers and evaluate their productivity. The Scheduler program produced substantial cost savings by incorporating roles previously performed by supervisors and by more closely monitoring income, expenditures, and interviewer activity.

Chris McCarty, director of the Survey Program, co-authored articles that will be published in *International Sociology* and *Maternal and Child Nutrition*. He received two grants from the National Science Foundation (NSF) and served as a consultant on two other grants. He presented workshops on social networks at two national conferences; co-organized the Sunbelt Social Networks Conference; gave talks at two universities; presented a paper at the annual meeting of the American Anthropological Association; reviewed proposals for two NSF panels; taught a course on survey research methods; and served on faculty advisory committees for UF's Water Institute and Medicaid Research Center.

The **Economic Analysis Program** published the Florida Price Level Index for the Legislature's use in allocating K-12 education funds and the Florida County Retail Price and Wage Indices for general use. In conjunction with UF's Shimberg Center and researchers at Florida State University, staff members completed an analysis of the effects of the proposed changes to Florida's property tax system, as described in Amendment 1 to the Florida Constitution voted on earlier this year. A summary of the results were published in *Florida Focus*.

Jim Dewey, director of the Economic Analysis Program, co-authored an article with Dave Denslow and several others that was accepted for publication in the *Journal of Teacher Education*. He also presented a paper at the annual meeting of the Southern Regional Science Association and was invited to join the advisory board for the ACCRA Cost of Living Index. Dave Denslow co-authored an update of *Tough Choices* and made 12 presentations to government, civic, and business groups throughout the state. He also served as a member of Gainesville's Police and Fire Pension Board, the Collins Institute Board of Directors, and the Florida Council of Economic Advisers. Lynne Holt co-authored papers that will be published in the *CommLaw Conspectus: Journal of Communications Law & Policy*, the *Journal on Telecommunications and High Technology Law* and the *Texas Journal of Oil, Gas and Energy Law*. She and Bob Lotfinia published a book chapter on Florida's education finance system.

The **Information/Publications Services Program** produced and published three annual statistical volumes about Florida and three monthly or annual reports during the past year: *Florida Statistical Abstract* (41st edition), *Florida County Rankings*, *Florida County Perspective*, *Annual State and County Building Permits and Housing Starts, 1976-2006 and 1976-2007*, *Building Permit Activity in Florida*, and *Gross and Taxable Sales*. Staff members also published and distributed *Florida Estimates of Population* and three issues of *Florida Population Studies*. Staff members edited and published three online Economic Analysis Program (EAP) reports and indexed a book chapter authored by EAP staff members. Staff members are currently working with the Florida State Fire Marshal's office to produce the *Florida Public Schools Annual Fire Safety Report*.

Additionally, staff members coordinated, copy-edited, and published three online *Florida Focus* articles during the year, managed the BEBR web site content, monitored web site use statistics, and regularly uploaded news articles to the "BEBR in the News" section of the web site. Current web-based projects include assessing usability and evaluating design issues related to user feedback. Staff members responded to more than 2,300 telephone and e-mail information requests throughout the year. Susan Floyd, Eve Irwin, and Phoebe Wilson served as judges for

the 2007 Association for University Business and Economic Research (AUBER) Publications Award of Excellence. Susan Floyd served on the AUBER board of directors, as a session coordinator, chairperson, and presenter for the 2007 annual fall conference held and is planning sessions for the 2008 conference.

UF recently implemented a “Think Before You Ink” campaign to curtail printing costs by encouraging electronic printing alternatives. BEBR began implementing its own printing-reduction program well in advance of the campus-wide campaign. As a result of these efforts, electronic sales have more than doubled in the last three years and now account for roughly 38% of all publication sales. This not only substantially reduces the use of paper, but also has led to substantial reductions in printing, handling, and mailing costs. Upon learning of BEBR’s efforts in this area, Dan Williams, UF’s Director of Marketing, commented in a recent e-mail, “...it sounds like you [BEBR] are setting a great example for the rest of campus!”

The **Administrative Services Program** manages the budget, tracks revenues and expenditures, maintains personnel files and appointments, handles orders and shipments of publications, provides oversight for compliance with UF rules and regulations, and performs many other essential office tasks. Staff members also provide grant management services for the CIBER program and maintain the fire safety inspection portal for the State Fire Marshall’s Office. These two projects generated \$23,500 during the past year.

The **Information Technology Program** continues to update and redesign the BEBR web site, which generates approximately 30,000 page views and 5,500 unique visitors per month. Staff members are looking into a number of usability enhancements and investigating ways to implement a fully integrated E-commerce sales program. IT staff members also provide a great deal of assistance to the Survey Program, helping develop its automated system for monitoring and evaluating telephone interviewers, installing a new telephone system, and installing new computer equipment for 75 interview stations. Clint Collins, director of the Administrative Services and IT programs, won a Superior Accomplishment Award for meritorious service to the university. He continued to serve on UF’s Technology Administrative Committee and Enterprise Calendar Project and as president of the Gator Linux Users Group. Martin Smith served as a member of the UF LGBT committee, the Bridges/IPAY focus group, and the DSO Friends program and was a judge for the GatorLUG programming contest. In personnel moves, Geoff Stewart was hired to replace Matt Collins, who left for another position at UF.

BEBR currently employs 22 staff members and a large number of graduate students, undergraduate students, and part-time hourly workers (see Figure 2). This report provides a quick overview and summary of our activities and accomplishments from May 1, 2007 through April 30, 2008. For additional information of BEBR’s products, services, and research activities, check out our website at www.bibr.ufl.edu or give us a call at (352) 392-0171.

Figure 2. Organizational Chart, BEBR

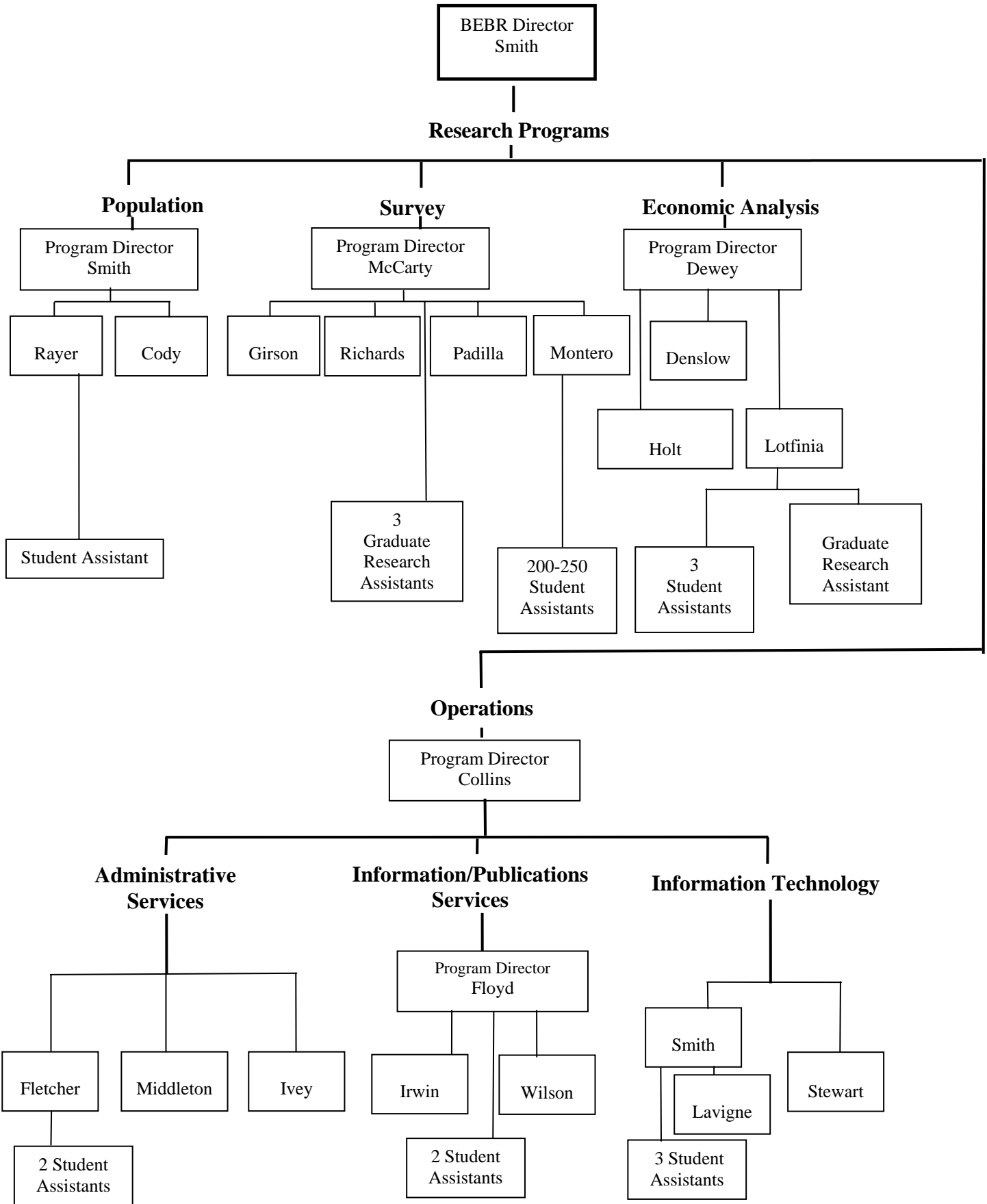


Table 1. Publications, 2007-2008

Denslow, David and Carol Weissert

Tough Choices: Update 2008, LeRoy Collins Institute: Tallahassee, 2008

Denslow, David, Jim Dewey and Tom Durrenberger

“Soaring House Prices and Wages of Local Government Employees,” *Florida Focus*, Vol. 3, No. 3, June 2007

Dewey, Jim, David Denslow and Bob Lotfinia

“2007 Florida Price Level Index,” report prepared for the Florida Legislature, January 2008.

“2006 Florida County Retail Price and Wage Indices,” Bureau of Economic and Business Research, February 2008.

“Analytical Services Relating to Property Taxation—Part II: Revenue Component,” report prepared for the Florida Legislature, August 2008.

Dewey, Jim, David Denslow, Chifeng Dai, Paul Sindelar and Mike Rosenberg

“Optimal Investments in Alternative Teacher Preparation,” *Journal of Teacher Education*, forthcoming.

Dewey, Jim, David Denslow, Lynne Holt and Bob Lotfinia

“Economic Implications of Florida’s Proposed Property Tax Amendment,” *Florida Focus*, Vol. 4, No. 1, January 2008

Floyd, Susan, Eve Irwin and Phoebe Wilson

Florida Statistical Abstract, 2007, 41st ed., Bureau of Economic and Business Research, December 2007.

Florida County Rankings, 2007, 13th ed., Bureau of Economic and Business Research, March 2008.

Holt, Lynne and Mary Galligan

“State and Federal policies to Accelerate Broadband Deployment in Sparsely Population Areas of the United States: Why the Old Size Shoe Might No Longer Fit,” *CommLaw Conspectus: Journal of Communications Law & Policy*, forthcoming.

**Table 1. Publications, 2007-2008
(continued)**

Holt, Lynne and Mark Jamison

“Federal Regulation and Competitive Access to Multiple-Unit Premises: More Choice in Communications Services?” *Journal on Telecommunications and High Technology Law*, forthcoming.

Holt, Lynne, Paul Sotkiewicz and Sanford Berg

“When to Build or Not to Build?” *Texas Journal of Oil, Gas and Energy Law*, forthcoming

Holt, Lynne and Bob Lotfinia

“Florida’s Education System,” in J. Edwin Benton (ed.), *Government and Politics in Florida*, 3rd ed., pages 328-356. University Press of Florida: Gainesville 2008.

Holt, Lynne and Susan MacManus

“Consumer Protection in the Digital Age,” *Florida Focus*, Vol. 4, No. 2, March 2008.

Irwin, Eve

Building Permit Activity in Florida, Bureau of Economic and Business Research, annual 2007 and monthly 2007-2008.

Gross and Taxable Sales Reports, Bureau of Economic and Business Research, annual 2007 and monthly 2007-2008.

Irwin, Eve and Phoebe Wilson

Florida County Perspective, 2007, Bureau of Economic and Business Research, March 2008.

McCarty, Christopher and Amber Wutich

“Social Networks and Infant Feeding in Oaxaca, Mexico,” *Maternal and Child Nutrition*, 4: 121-135, 2008.

McCarty, Christopher, Miranda Lubbers and Jose Lius Molina

“Personal Networks and Ethnic Identifications: The Case of Migrants in Spain,” *International Sociology*, 22:720-740, 2007.

Table 1. Publications, 2007-2008
(continued)

Rayer, Stefan

“Population Forecast Errors: A Primer for Planners,” *Journal of Planning Education and Research*, 27: 417-430, 2008.

Smith, Stanley and Scott Cody

“Number of Households and Average Household Size in Florida: April 1, 2007,” *Florida Population Studies*, Vol. 41, Bulletin 149, February 2008.

Smith, Stanley and Chris McCarty

“Fleeing the Storm(s): Determinants of Evacuation during Florida’s 2004 Hurricane Season,” *Demography*, forthcoming.

Smith, Stanley and Stefan Rayer

“Population Projections by Age, Sex, Race, and Hispanic Origin for Florida and Its Counties, 2006 – 2030,” *Florida Population Studies*, Vol. 40, Bulletin 148, June 2007.

“Projections of Florida Population by County, 2007–2035,” *Florida Population Studies*, Vol. 41, Bulletin 150, March 2008.

Smith, Stanley, Scott Cody and Stefan Rayer

Florida Estimates of Population 2007, Bureau of Economic and Business Research, February 2007.

Smith, Stanley, Stefan Rayer and Eleanor Smith

“Aging and Disability: Implications for the Housing Industry and Housing Policy in the United States,” *Journal of the American Planning Association*, forthcoming.

Table 2. Presentations at Academic/Professional Conferences, 2007-2008

Dewey, Jim

“Inter-city Compensating Wage Differentials and Intra-city Workplace Centralization,” 47th Annual Meeting of the Southern Regional Science Association, Washington, D.C., March 2008.

Lavigne, Eric

“Extraordinary Improvement in Scintillation Detectors via Post-Processing with ASEDRA – Solution to a 50-year-old Problem,” *SPIE Defense and Security Symposium*, Orlando, FL, March 2008.

McCarty, Chris

“Workshop on Social Network Analysis,” American Anthropological Association, Washington DC, November 2007.

“A Personal Network Measure of Acculturation,” Arizona State University, April 2008.

“Two Methods to Identify Potential Victims of Prison Violence Using Reports from Correctional Officers: A Proposal to the National Institute of Justice,” Kent State University, April 2008.

Smith, Stanley, Stefan Rayer and Eleanor Smith

“Aging and Disability: Implications for the Housing Industry and Housing Policy in the United States,” Southern Demographic Association, Birmingham, AL, October 2007.

Table 3. Presentations to Business/Civic/Government Groups, 2007-2008

Denslow, David

“State Fiscal Policy,” Florida Association of County Commissioners, Gainesville, October 2007

“State Fiscal Policy,” Tax and Budget Reform Commission, Tallahassee, November 2007

“Economic Outlook,” Florida Institute of CPA’s, Gainesville, November 2007

“State Fiscal Policy,” Tax Watch Board of Directors, Tallahassee, December 2007

“Economic Outlook,” Florida Association of Business Editors, Tallahassee, January 2008

“Jacksonville Economic Outlook,” St. John’s Realtors’ Association (at request of UF Alumni Association), St. John’s County, January 2008

“Property Taxes and Sales Taxes,” Tax and Budget Reform Commission, State Fiscal Policy, Tallahassee, January 2008

“Income Distribution,” Oak Hammock, Gainesville, January 2008

“Florida’s Fiscal Policy,” Editorial Boards, Palm Beach Post, Fort Lauderdale Sun Sentinel, State Fiscal Policy and University Tuition, Palm Beach and Fort Lauderdale, January 2008

“Florida Housing Market,” 30 Minute Interview, Radio Canada, , Gainesville, February 2008

“Florida Economy,” Business Advisory Board, Gainesville, Warrington CBA, March 2008

“Economic Outlook,” Palm Beach, Broward, and Miami-Dade UF Alumni Associations, West Palm Beach, Fort Lauderdale, Miami, May 2008

Smith, Stanley

“Methods of Population Projection,” presentation to the Land Use and Transportation Subcommittee of the Energy Conservation Strategies Commission, Gainesville, January 2008

Table 4. Professional and University Service, 2007-2008

Cody, Scott

Florida Representative, Federal State Cooperative Program for Population Estimates, US Census Bureau

Collins, Clint

Member, Technology Administrative Committee, Network Infrastructure, UF
Member, UF Enterprise Calendar Project
President, Gator Linux Users Group

Denslow, David

Member, College of Business Teaching Committee
Member, UF Academic Policy Council
Chair, UF Honorary Degree Committee
Member, City of Gainesville Police & Fire Pension Board
Member, Collins Institute Board of Directors
Member, State of Florida Council of Economic Advisers

Floyd, Susan

Member, UF Communications Network
Board of Directors, Association for University Business and Economic Research (AUBER)

Holt, Lynne

Panelist, Florida Chapter of the Federal Communications Bar Association

McCarty, Chris

Member, Faculty Advisory Committee, UF Water Institute
Member, Faculty Advisory Committee, UF Medicaid Research Center
Reviewer, National Science Foundation Dissertation Proposal Panel
Co-Organizer, Sunbelt Social Networks Conference, St. Petersburg, FL
Member, International Network for Social Network Analysis

Rayer, Stefan

Florida Representative, Federal State Cooperative Program for Population Projections, US Census Bureau

Table 4. Professional and University Service, 2007-2008
(continued)

Smith, Martin

Participant, OSCON
Member, LGBT Concerns Committee (Presidential)
Participant, AP Assembly
Member, DSO Friends Program
Member, Judge for the 2008 GatorLUG Programming Contest
Participant, Bridges/IPAY Focus Group
Participant, CNS events and lunch talks about security and other topics
Participant, Free/Open Source Software Contributions (almost all as a representative of UF)

Smith, Stanley

Member, Panel on the Design of the 2010 Census Program of Evaluations and Experiments,
National Research Council, National Academy of Sciences
Florida Representative, Federal State Cooperative Programs for Population Estimates and
Population Projections, US Census Bureau
Member, Committee to Evaluate Housing Unit-Based Population Estimates, US Census Bureau
Session Chair, annual meeting Southern Demographic Association, Birmingham
Session Chair, Population Association of America, New Orleans
Reviewer, *Demography*, *Population Research and Policy Review* and Springer Publishers
Outside Tenure Reviewer, UC-Riverside and Rice University
Participant, fall and spring meetings of the Florida Demographic Estimating Conference,
Tallahassee

Table 5. Contracts and Grants Awarded, 2007-2008*

Collins, Clint

“Inspection Report Data Entry Module,” Division of State Fire Marshal \$5,527

Dewey, Jim

“Florida Price Level Index,” Florida Legislature \$150,000

McCarty, Chris

“Social and Cultural Context of Racial Inequalities in Health,” National Science Foundation \$14,650

“Social Network Analysis of the Collaborative Interaction of Scientific in Academic and Non-Academic Settings \$355,993

McCarty, Chris, Scott Richards, Armando Padilla and Mark Girson

Surveys for:

Agency for Health Care Administration	\$197,575
Fl Department of Children & Families	14,974
Fl Department of Transportation	114,180
Florida Dept of Corrections	1,000
Kaiser Family Foundation	19,000
Public Service Commission	6,000
Purdue University	39,000
RAND Corporation	30,000
UF - College of Business Administration	56,508
UF - College of Education	7,430
UF - College of Fine Arts	500
UF - College of Law	75,000
UF - College of Nursing	3,120
UF - College of Public Health	33,000
UF - College of Veterinary Medicine	5,000
UF - Dept of Tourism, Recreation & Sports Mgmt	6,825
UF - IFAS	73,500
UF - Institute for Child Health Policy	758,164
UF - Medicaid Center	75,080
University of Miami	26,565
VA Medical Center	10,202
VISIT Florida	6,000

Subtotal \$1,558,624

Table 5. Contracts and Grants Awarded, 2007-2008*
(continued)

Smith, Stanley

“Population Research Contract,” Florida Legislature	\$302,874
“Evaluation of Small-Area Population Projections,” Shimberg Center, UF	15,000

TOTAL **\$2,402,668**

*Note: These data refer to contracts and grants awarded during the 2007-2008 fiscal year. Not all of the revenues were actually received during that fiscal year.

Table 6. Courses Taught, 2007-2008

Denslow, David

Summer A 2007	ECO 2013	Intro Macroeconomics	144	students
Summer B 2007	ECO 2013	Intro Macroeconomics	152	students
Fall 2007	ECO 2013	Intro Macroeconomics	782	students
Spring 2008	ECO 2013	Intro Macroeconomics	841	students
Spring 2008	ECO 4934	Honors Urban Economics	25	students

Dewey, Jim

Fall 2007	ECP 3703	Managerial Economics	700	students
Spring 2008	ECP 3703	Managerial Economics	700	students

McCarty, Chris

Summer C 2007	PHC6937	Survey Research Methods	21	students
---------------	---------	-------------------------	----	----------

Smith, Stanley

Spring 2008	ECP 3113	Population Economics	37	students
-------------	----------	----------------------	----	----------