
**Bureau of Economic and Business Research
Annual Report 1996-97**

June 1997

**Bureau of Economic and Business Research
221 Matherly Hall
P.O. Box 117145
University of Florida
Gainesville, FL 32611-7145
Telephone: 352-392-0171
Fax: 352-392-4739
Web Site: www.cba.ufl.edu/bebr**



**UNIVERSITY OF
FLORIDA**

Bureau of Economic and Business Research Annual Report 1996-97

About the BEBR

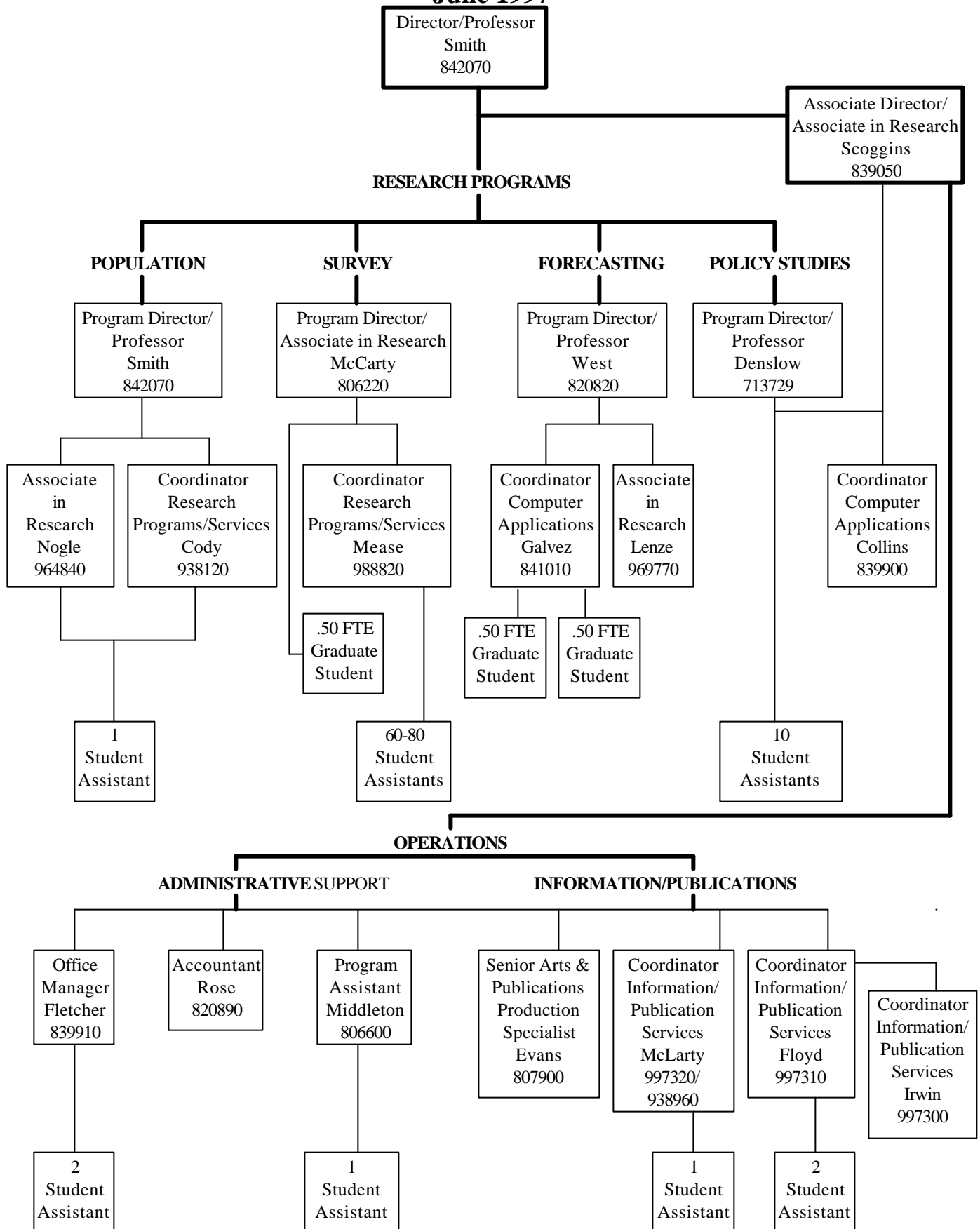
Founded in 1929, the Bureau of Economic and Business Research (BEBR) is an applied research center in the College of Business Administration at the University of Florida. Its primary mission is to: 1) Collect, analyze, and generate economic and demographic data on Florida and its local areas; 2) Conduct economic, demographic, and public policy research on topics of particular importance to the state of Florida; and 3) Distribute data and research findings throughout the University, the state, and the nation. The BEBR seeks to conduct research that is both academically sound and directly relevant to public and private decision-makers in Florida.

The BEBR plays a number of roles within the College and the University. Its research contributes to a deeper understanding of Florida's rapidly changing economic and demographic climate. It provides employment and training for 2-4 graduate students and 70-80 undergraduate students each year. It generates revenues by selling data and publications and by obtaining contracts and grants. It creates favorable publicity for the College and University through its publications, presentations, and reference services. Its staff members teach several courses each year in the Economics Department, and occasionally in other departments as well. BEBR activities thus fall within the University's traditional functions of teaching, research, and service, but the impact of those activities carries far beyond campus boundaries.

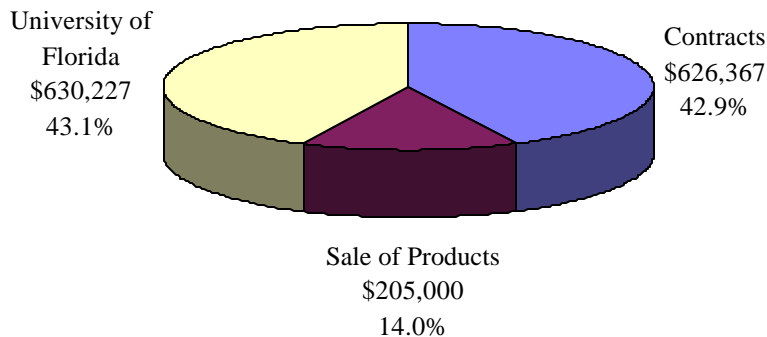
The BEBR currently employs eighteen full-time staff members. Three are teaching faculty with joint appointments in the Economics Department; seven are research analysts in the Population, Forecasting, Survey, and Policy Studies programs; four are publication specialists or coordinators of information and publication services; and four are support personnel in office management, computing, accounting, and secretarial positions. BEBR staff members are thoroughly trained, highly motivated, and very productive; they represent an important human resource for the state of Florida. The BEBR's organizational chart is shown in Figure 1.

The BEBR's estimated revenues for 1996-97 were \$1,461,594, about \$255,000 lower than the previous year. This decline was primarily the result of cuts in the BEBR's share of the College budget. Only 43% of the BEBR's revenues in 1996-97 came from the University as part of the College budget, compared to 50% just four years ago. Another 43% came from outside research contracts and 14% from the sale of data and publications (Figure 2). About 80% of the BEBR's budget is typically spent on wages and salaries, with the remainder going toward capital outlays, telephone, travel, postage, computer time, and other expenses.

**Figure 1. Organizational Chart, Bureau of Economic and Business Research
June 1997**



**Figure 2. Estimated Revenues 1996-97
(preliminary): \$1,461,594**



The Year in Review

The past year was one of downsizing and consolidation in the BEBR. There was a loss of two staff positions and one major research product: the short-term economic forecasts produced quarterly for Florida and its metropolitan areas. Several positions were redefined and several staff members took on new duties and responsibilities. At the same time, several new projects were begun and new products were added. We believe the BEBR will continue to adapt to a changing economic and political environment and will continue to make important research contributions to the College, the University, and the State of Florida.

The **Population Program** again produced the official population estimates for all cities and counties in Florida; estimates of households and average household size for the state and each county; and population projections by age, sex, and race for the state and each county. It produced the first-ever set of estimates of the Hispanic population of Florida and each of its counties, by age, sex, and race. This is a product for which there had been a great deal of demand, and it fills a critical gap in the availability of Florida demographic data. The program also made improvements in the collection of mobile home and electric customer data; collected and analyzed annual migration data from the Internal Revenue Service; provided input to the population estimates and/or projections programs of the U.S. Census Bureau and the Florida Consensus Estimating Conference; developed population estimates for several newly incorporated cities; and helped several cities conduct special censuses. As always, it provided demographic data and analysis to many representatives of the media, government agencies, academic departments, and business organizations.

Staff members in the Population Program presented six papers at professional meetings; had two articles accepted for publication in academic journals; refereed four articles for academic journals and a grant proposal for the National Science Foundation; taught a course in the Economics Department; served as a panel member on the National Academy of Sciences' Panel on Alternative Census Methodologies; and participated in the Social Science Research Council's Program on Immigration, Integration, and Citizenship.

Significant changes occurred in the **Forecasting Program** during the past year. Two staff members left the BEBR to take positions elsewhere. As a result of budget cuts and these staff departures, the decision was made to cease production of *The Florida Outlook*, a quarterly publication presenting short-term economic forecasts for the nation, the state, and metropolitan areas in Florida. This was a difficult decision to make because the *Outlook* had been an important BEBR publication for twenty years. The Forecasting Program continued to produce *The Florida Long-term Economic Forecast*, an annual publication presenting five-, ten-, and fifteen-year economic forecasts for the state and each county. These forecasts are widely used for budgeting and planning purposes in both the public and private sectors in Florida. Staff members largely completed the conversion to a new forecasting software system, which will save thousands of dollars in computing costs each year. The Forecasting Program also brought in a large contract with the Florida Concrete and Products Association to conduct monthly surveys of cement and concrete production and usage in Florida and to report on general business indicators for regions of the state.

Staff members in the Forecasting Program presented four papers at professional meetings; had four articles accepted for publication in academic journals, business magazines, or conference proceedings; taught a course in the Economics Department; served on the editorial boards of two academic journals; made several presentations on the Florida economy to groups throughout the state; and participated in the Florida Commission on Hurricane Loss Projection Methodology.

The **Survey Program** conducts a monthly telephone survey of approximately 1,000 Floridians. This survey generates a monthly consumer confidence index and several special research reports. In addition to a core group of questions asked every month, other questions are added for short periods of time to collect data on specific topics. Faculty use this survey as a vehicle for gathering data used in academic research; recent topics have included the acquisition of life insurance and the determinants of gift-giving behavior. State government agencies use the survey to collect data on the attitudes, opinions, characteristics, and behavior of Floridians. During the past year, the Department of Corrections, Department of Environmental Regulation, and the Florida Commission on Tourism used the monthly survey to collect data relevant to their operations. Questions added to the regular monthly survey are often funded by the interested client or agency.

The Survey Program also conducts customized surveys that are independent of the regular monthly survey. In the past year, these have included a survey of all apartment complexes in Florida to estimate average rents; a survey of Floridians about their awareness of beach erosion and the preservation of loggerhead turtle nesting grounds; and a survey of Medicaid recipients to determine why dental services are under-utilized. These customized surveys--in combination with add-ons to the regular monthly survey--generated more than \$75,000 in revenue in 1996-1997 and provided valuable data to faculty, state agencies, and Florida businesses. During the past year, members of the Survey Program presented a paper at a professional meeting; had two articles accepted for publication in academic journals; and taught two courses in the Marketing Department.

The **Policy Studies Program** is approaching the final year of a four-year study of the Florida Price of Living Index (FPLI), which guides the allocation of funds to the state's school districts. The FPLI is the most thorough county-by-county price index found in any state. This year the study focused on apartment rents, using data gathered by the Survey Program from over 3,000 apartment complexes containing nearly half a million units; and on residential land values, using data collected by a private firm from nearly all 67 county property appraisers. As a by-product of this analysis, we have come to the conclusion that the BEBR could construct the FPLI at a lower cost to the State of Florida than it is currently paying. We are currently exploring this possibility, believing that combining data-gathering and theoretical-analysis functions within a single organization would offer opportunities for improving the accuracy of the index while reducing its cost.

Staff members in the Policy Studies Program are working with the Florida Commission on Governmental Accountability to the People (GAP) to improve the indicators used to measure the state's economic well-being and quality of life. The purpose of this project is to give state and local governments quantifiable targets for measuring their success in responding to the needs of the state's citizens. In the past year staff members in the Policy Studies Program had one book chapter accepted for publication; refereed three articles for academic journals; taught three courses in the Economics Department; and made numerous presentations on the Florida economy to groups throughout the state.

The **Information/Publication Services Program** launched two new publications this year. *Florida and the Nation* is an annual statistical comparison of Florida with other states on subjects such as population, housing, education, income, employment, crime, and tourism. *Florida Business Briefs* is a monthly newsletter featuring survey data, research results, and recent economic developments which are important to Florida businesses. Perhaps the major accomplishment of the Information/Publication Services Program this year was the initiation of an in-house system of publication, marketing, and shipping for the *Florida Statistical Abstract*, the most comprehensive source of statistical information on the state. This was a major undertaking, but one which will make the publication process more efficient and timely and will lead to savings of thousands of dollars each year. Staff members continued to produce and distribute several other BEBR publications and to answer hundreds of informational calls each month.

The following tables provide a quick overview and summary of the BEBR's activities and output during the past year. For additional information on our products, services, and research activities, give us a call at (352) 392-0171.

**Staff members, Bureau of Economic and Business Research
June 1997**

Director: Stanley K. Smith, Ph.D., Professor and Program Director

Associate Director: John F. (Dick) Scoggins, Ph.D.

Forecasting Program:

Carol T. West, Ph.D., Professor and Program Director

David G. Lenze, Ph.D., Associate Program Director

Janet Galvez, M.S.

Policy Studies Program:

David A. Denslow, Ph.D., Professor and Program Director

John F. (Dick) Scoggins, Ph.D.

Population Program:

Stanley K. Smith, Ph.D., Professor and Program Director

Scott Cody, M.B.A.

June Nogle, A.B.D.

Survey Program:

Chris McCarty, Ph.D., Program Director

Ken Mease, Ph.D.

Information/Publications Services:

John F. (Dick) Scoggins, Ph.D., Director

Susan Floyd, B.A.

Eve Irwin, B.A.

Carol McLarty, B.S.

Dorothy Evans

Support Staff:

Clinton B. Collins, B.S., Coordinator of Computer Services

Janet Fletcher, Office Manager

Pamela Middleton

Janet Rose, A.A.

Table 1. Academic/Professional Publications, 1996-97

Lenze, David

"Dynamic and Spatial Impact of Hurricane Andrew on Florida's Taxable Sales: An Intervention Analysis," *Review of Regional Studies*, (forthcoming).

McCarty, Chris

"Eliciting Representative Samples of Personal Networks," *Social Networks* (forthcoming), coauthor.

"Estimation of Seroprevalence, Rape and Homelessness in the U.S. Using a Social Network Approach," *Social Networks* (forthcoming), coauthor.

Nogle, June

"The Impact of Foreign-born Internal Migration on States' Immigrant Populations," *International Journal of Population Geography* (forthcoming).

Scoggins, John F. (Dick)

"Do Baseball Arbitrators Simply Flip A Coin?," *Baseball Economics*, Praeger Publishers: Westport, CT (1996), pp. 101-110, coauthor.

Smith, Stanley K.

"Further Thoughts on Simplicity and Complexity in Population Projection Models," *International Journal of Forecasting* (forthcoming).

West, Carol T.

"The Next Big Blow," *Florida Trend*, July (1996), pp. 18-21.

"Indirect Economic Impacts of Natural Disasters: Policy Implications of Recent Research and Experience," *Proceedings of the Conference on Analyzing Economic Impacts and Recovery from Urban Earthquakes Issues for Policy Makers*, sponsored by Earthquake Engineering Research Institute and the Federal Emergency Management Agency (1996).

"Lessons from the Glass Ceiling and the Black Box," *Review of Regional Studies*, Vol. 27 (1997) (forthcoming).

Table 2. Technical/Analytical/Data Publications, 1996-97

Cody, Scott

Florida Estimates of Population: April 1, 1996 (February 1997), coauthor.

"Number of Households and Average Household Size in Florida and Its Counties: April 1, 1996,"
Florida Population Studies, No. 116 (January 1997), coauthor.

Floyd, Susan S.

1996 Florida Statistical Abstract (August 1996), editor.

Florida County Rankings 1996 (November 1996), editor.

County Perspective 1996 (February 1997), section editor.

Florida and the Nation, 1997 (April 1997), editor.

Lenze, David

The Florida Long-term Economic Forecast, Vol. 1 & 2 (1996), coauthor.

"National Economic Review," *Concrete Market Update and Economic Review* (4th quarter 1996).

McCarty, Chris

Florida Consumer Confidence Index analysis, monthly, (1996-97).

McLarty Carol

Florida Business Briefs, monthly, assistant editor.

Building Permit Activity in Florida, monthly and annual editions (1996-97), editor.

Gross and Taxable Sales Reports, monthly and annual editions (1996-97), editor.

Mease, Ken

"Worker Concerns about Downsizing and Job Security," *Florida Business Briefs* (April 1997).

**Table 2. Technical/Analytical/Data Publications, 1996-97
(continued)**

Nogle, June

"Population Projections by Age, Sex and Race for Florida and its Counties, 1995-2010," *Florida Population Studies*, No. 115 (July 1996), coauthor.

"Hispanic Population Estimates by Age and Sex for Florida and Its Counties, April 1, 1995," *Special Population Reports*, No. 4 (August 1996), coauthor.

"Projections of Florida Population by County, 1996-2020," *Florida Population Studies*, No. 117 (January 1997), coauthor.

"Florida Population Estimates," *Florida Business Briefs* (February 1997).

"Will Florida's Population Continue to Grow?" *Florida Business Briefs* (March 1997).

Scoggins, John F. (Dick)

Florida Business Briefs, monthly, editor.

"Is Florida Too Far Away for Manufacturers?" *Florida Business Briefs* (January 1997).

"Are Rental Rates in South Florida Really So High?" *Florida Business Briefs* (February 1997).

"Want a Part-time Job? Try Daytona Beach," *Florida Business Briefs* (March 1997).

"Pinellas County Has the Location, Location, Location," *Florida Business Briefs* (April 1997).

Smith, Stanley K.

"Population Projections by Age, Sex and Race for Florida and its Counties, 1995-2010," *Florida Population Studies*, No. 115 (July 1996), coauthor.

"Hispanic Population Estimates by Age and Sex for Florida and Its Counties, April 1, 1995," *Special Population Reports*, No. 4 (August 1996), coauthor.

"Number of Households and Average Household Size in Florida and Its Counties: April 1, 1996," *Florida Population Studies*, No. 116 (January 1997), coauthor.

**Table 2. Technical/Analytical/Data Publications, 1996-97
(continued)**

"Projections of Florida Population by County, 1996-2020," *Florida Population Studies*, No. 117 (February 1997), coauthor.

Florida Estimates of Population: April 1, 1996 (February 1997), coauthor.

West, Carol

The Florida Long-term Economic Forecast, Vol. 1& 2 (1996), coauthor.

"Florida Economic Review," *Concrete Market Update and Economic Review* (4th quarter 1996).

Table 3. Papers Presented at Academic/Professional Meetings, 1996-97

Lenze, David

"The Role of Economic Impact Analysis in Military Base Realignments and Closures 1988-95," Spring 1997 Border-Region Economic Forum, El Paso, Texas, April 1997.

"The Mobile Home Component of Regional Housing Markets," Southern Regional Science Association Meetings, Memphis, Tennessee, April 1997.

McCarty, Chris

"Comparing Two Methods for Estimating Personal Network Size," International Social Network Meetings, San Diego, California, February 1997, coauthor.

Nogle, June

"Methodology for Making Estimates of the Hispanic Population by Age, Sex, and Race: Florida and Its Counties," Population Association of America Meetings, Washington, DC, March 1997, coauthor.

"Description and Evaluation of a Methodology for Making Population Estimates by Age, Sex and Race," Federal-State Cooperative Program Meetings, Washington, DC, March 1997, coauthor.

"High School Graduation of Immigrant and Second Generation Youths, 1994," Population Association of America Meetings, Washington, DC, March 1997.

"An Introduction to Research on Internal Migration of the Foreign-born," Summer Institute on Immigration, Integration and Citizenship in Advanced Industrialized Democracies, New York, July 1996.

"Internal Migration of the Foreign-born, 1985-1990: A Factor in the Increasing Geographic Concentration of Immigrants," Population Association of America Meetings, New Orleans, May 1996.

Smith, Stanley K.

"Methodology for Making Estimates of the Hispanic Population by Age, Sex and Race," Population Association of America Meetings, Washington, DC, March 1997, coauthor.

**Table 3. Papers Presented at Academic/Professional Meetings, 1996-97
(continued)**

"Description and Evaluation of a Methodology for Making Population Estimates by Age, Sex and Race," Federal-State Cooperative Program Meetings, Washington, DC, March 1997, coauthor.

"In Defense of the Net Migrant," Population Association of America Meetings, New Orleans, May 1996, coauthor.

West, Carol T.

"Indirect Economic Impacts of Natural Disasters: Policy Implications of Recent Research and Experience," Analyzing Economic Impacts and Recovery from Urban Earthquakes: Issues for Policy Makers Conference, Pasadena, CA, October 1996.

"Regional Determinants of Regional Forecasting Errors," North American Regional Science Association Meetings, Washington, DC, November 1996.

Table 4. Presentations to Civic/Government/Business Groups, 1996-97**Denslow, David A.**

"The Economic Outlook," Florida Bankers Association Regional Meeting, Gainesville, November 1996.

"The Real Estate Outlook," Mortgage Bankers Association, Jacksonville, November 1996.

"The Florida Economy," Florida Leadership Council, Orlando, December 1996.

"The Florida Economy," The Free Speech Forum, Gainesville, February 1997 (also on radio).

"The Florida Economy," Florida School of Accounting Program, Gainesville, February 1997.

Testimony to Education Subcommittee of House Appropriations Committee, Bill Sublette, chair, Tallahassee, February 1997.

"The Florida Economy," University of Florida Real Estate Conference, Miami, March 1997.

"The Economy of Florida's Treasure Coast," Florida Bar Association Regional Meeting, Cocoa Beach, March 1997.

"The Tampa Bay Economy," Pinellas County Gator Club, Clearwater, March 1997.

"The Putnam Economy," Putnam Society (at request of Florida Foundation), Palatka, April 1997.

"The Florida Economy," Decision and Information Sciences Advisory Council, Gainesville, April 1997.

"The Alachua and Marion Economies," Ocala/Gainesville Business Leaders Forum, Ocala, April 1997.

"The Alachua Economy," Sustainable Alachua County Committee, Gainesville, June 1997.

Lenze, David

"The Columbia County Economic Outlook, 1995-2010," Lake City Chamber of Commerce, Lake City, January 1997.

**Table 4. Presentations to Civic/Government/Business Groups, 1996-97
(continued)**

"The Florida Construction Outlook, 1995-2010," Senate Community Affairs Committee, Tallahassee, February 1997.

"The Housing Outlook for Jacksonville, 1995-2010," First Coast's Real Estate Outlook Conference, Jacksonville, April 1997.

"The Citrus County Economic Outlook, 1995-2005," 1996 Leadership Citrus Program, Crystal River, June 1996.

McLarty, Carol

"Marion County Demographic Outlook and Data Resources Overview," Marion County Community Improvement Council, Ocala, May 1996.

Scoggins, John F. (Dick)

"Local Economic Outlook," Mandarin Chamber of Commerce, Jacksonville, October 1996.

West, Carol T.

"Florida Demographic and Economic Growth in the Next Quarter Century," 21st Annual Conference of Water Management, Ft. Lauderdale, September 1996.

"Market Outlooks," Florida Concrete and Products Association, Orlando, October 1996.

Table 5. Contracts and Grants, 1996-97

Denslow, David

Florida Price of Living Index, \$70,000

McCarty, Chris

Florida Department of Education, \$12,000

Florida Commission on Tourism, \$12,000

UF College of Dentistry, \$9,684

Florida Concrete and Products, \$8,980

UF Department of Anthropology, \$7,832

Bell South, \$6,800

Florida Clinical Practice, \$5,000

Infotech, Inc., \$3,843

Florida Department of Corrections, \$3,276

Askew Institute, \$3,000

NICOR, Inc., \$1,920

Accounting Firms Associated, \$675

IFAS, \$300

Smith, Stanley K.

"Florida Population Research," Florida Legislature, \$249,133

West, Carol T.

"Florida Long-Run Econometric Forecasting Models," Florida Legislature, \$206,234

"Concrete Market Monitoring Model," Florida Concrete and Products Association, \$65,670

Table 6. Courses Taught, 1996-97

Denslow, David A.

Summer A	96	Intro Macroeconomics	ECO 2013	3 credits	100 students
Fall	96	Intro Macroeconomics	ECO 2013	3 credits	1100 students
Spring	97	Intro Macroeconomics	ECO 2013	3 credits	1300 students

McCarty, Chris

Fall	96	Marketing Research	4613X2797	4 credits	33 students
Fall	96	Marketing Research	4613X2798	4 credits	31 students

Smith, Stanley K.

Fall	96	Population Economics	ECP 3113	4 credits	27 students
------	----	----------------------	----------	-----------	-------------

West, Carol T.

Spring	97	Managerial Economics	ECO 3100	4 credits	27 students
--------	----	----------------------	----------	-----------	-------------

Filename: ANNRPT97
Directory: P:\INP\dote\BEBRreports
Template: C:\Program Files\Microsoft Office\Office\Normal.dot
Title: Bureau of Economic and Business Research
Subject:
Author: Janet Fletcher
Keywords:
Comments:
Creation Date: 06/02/97 8:59 AM
Change Number: 33
Last Saved On: 05/10/00 12:15 PM
Last Saved By: dote
Total Editing Time: 654 Minutes
Last Printed On: 05/11/00 7:17 AM
As of Last Complete Printing
Number of Pages: 19
Number of Words: 3,479 (approx.)
Number of Characters: 19,832 (approx.)