
Bureau of Economic and Business Research Annual Report 1998-99

June 1999

**Bureau of Economic and Business Research
221 Matherly Hall
P.O. Box 117145
University of Florida
Gainesville, FL 32611-7145
Telephone: 352-392-0171
Fax: 352-392-4739
Web Site: www.bebr.ufl.edu**



**UNIVERSITY OF
FLORIDA**

Staff members, Bureau of Economic and Business Research June 1999

Director: Stanley K. Smith, Ph.D., Professor and Program Director

Forecasting Program:

Carol T. West, Ph.D., Professor and Program Director

David G. Lenze, Ph.D., Associate Program Director

Janet Galvez, M.S.

Policy Studies Program:

David A. Denslow, Ph.D., Professor and Program Director

James (Jim) F. Dewey, Ph.D.

Population Program:

Stanley K. Smith, Ph.D., Professor and Program Director

Scott Cody, M.B.A.

June Nogle, Ph.D.

Survey Program:

Chris McCarty, Ph.D., Program Director

Ken Mease, Ph.D.

Information/Publication Services:

Janet Galvez, M.S., Program Director

Susan Floyd, B.A.

Eve Irwin, B.A.

Carol McLarty, B.S.

Dorothy Evans

Administrative Services:

Clinton B. Collins, B.S., Program Director

Janet Fletcher

Pamela Middleton

Janet Rose, A.A.

Bureau of Economic and Business Research Annual Report 1998-99

About the BEBR

Founded in 1929, the Bureau of Economic and Business Research (BEBR) is an applied research center in the Warrington College of Business Administration at the University of Florida. Its primary mission is to: 1) Collect, analyze, and generate economic and demographic data on Florida and its local areas; 2) Conduct economic, demographic, and public policy research on topics of particular importance to the state of Florida; and 3) Distribute data and research findings throughout the state and the nation. The BEBR seeks to conduct research that is both academically sound and directly relevant to public and private decision-makers in Florida.

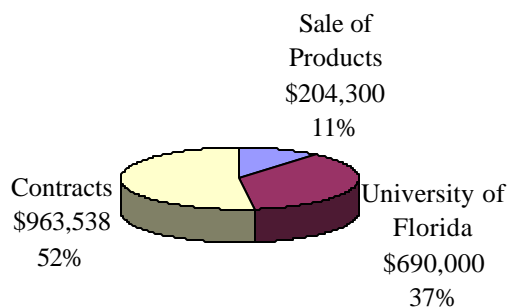
The BEBR plays a number of roles within the College and the University. Its research contributes to a deeper understanding of Florida's rapidly changing economic and demographic climate. It provides employment and training for several graduate students and more than 100 undergraduate students each year. It generates revenues by selling data and publications and by obtaining research contracts and grants. It creates favorable publicity for the College and University through its publications, presentations, and reference services. Its staff members teach several courses each year in the Economics Department, and occasionally in other departments as well. BEBR activities thus fall within the University's traditional functions of teaching, research, and service, but the impact of those activities carries far beyond campus boundaries.

The Year in Review

The BEBR had another successful year in 1998-1999. Staff members produced their usual broad array of academic and technical publications, presented papers at national conferences, served on committees for national professional organizations, answered a wide variety of requests for information, and made presentations to civic, government, and business groups throughout Florida. A renovation project improved the configuration of office space and added 16 work stations to the Survey Lab. Computer hardware, software, and network services were upgraded. Revenues from research contracts were more than \$963,000.

Perhaps the most important change in the BEBR during the past year was a shift in its organizational structure. Dick Scoggins, the Associate Director from 1995-1998, resigned last June to pursue private business opportunities. Rather than fill that position, we split the duties into two parts and promoted two staff members from within the BEBR to fill those parts. Janet Galvez became the Director of Information/Publication Services, supervising the staff in that area and overseeing the BEBR web site and the production of all BEBR publications. She continues in her previous role as data manager for the Forecasting Program. Clint Collins became Director of Administrative Services, overseeing the budget and accounting system, personnel appointments, compliance with College and University regulations, and the supervision of front office staff. He continues in his previous role as network administrator and overall computer guru for the BEBR.

**Figure 1. Estimated Revenues 1998-99
(preliminary): \$1,857,838**



This staff reorganization has gone very smoothly and we believe it has allowed us to make the most efficient use of our personnel resources. The vacated staff line was used to hire Jim Dewey, who received his Ph.D. from the UF Economics Department last fall. Jim is working with Dave Denslow as an analyst in the Policy Studies Program. His addition to the staff has helped us expand our research capacity.

The BEBR's estimated gross revenues for 1998-1999 were \$1,857,838, about \$36,000 lower than last year. As shown in Figure 1, research contracts accounted for 52% of the BEBR's revenues in 1998-1999, University resources accounted for 37%, and the sale of data and publications accounted for 11%. About 80% of the BEBR's budget is typically spent on wages and salaries, with the remainder going toward capital outlays, telephone, travel, postage, office supplies, and other expenses. Major expenses during 1998-1999 included the renovation of office space in Matherly 225 and the addition of computers and telephone equipment for the Survey Lab.

The BEBR currently employs eighteen full-time staff members. Three are teaching faculty with joint appointments in the Economics Department; seven are research analysts in the Population, Forecasting, Survey, and Policy Studies programs; four are publication specialists or coordinators of information and publication services; and four are support personnel in office management, computing, accounting, and secretarial positions. BEBR staff members are skilled, motivated, and productive; they represent an important human resource for the College, the University, and the State of Florida. The BEBR's organizational chart is shown in Figure 2.

The **Population Program** continued to produce the official population estimates for all cities and counties in Florida; estimates of households and average household size for the state and each county; and population projections by age, sex, and race for the state and each county. Staff members presented four papers at professional meetings, published three articles in academic journals or books, and served on three committees for professional organizations. Stan Smith completed his term as a panel member on the National Academy of Science's Panel on Alternative Census Methodologies and co-authored its final report. June Nogle chaired the annual meeting of the Federal-State Cooperative Program for Population Projections and was selected to serve a 3-year term as Secretary-Treasurer of the Southern Demographic Association. Staff members are currently doing research on the labor force participation of Hispanic

immigrant women; the fiscal impact of immigrants in Florida; the methodology and analysis of state and local population projections; and the use of telephone customer data as an indicator of the growth in the number of households in Florida.

The **Forecasting Program** continued to publish *The Florida Long-term Economic Forecast*, an annual publication presenting economic forecasts for the state and each county for 2000, 2005, and 2010. A major contract with the Florida Concrete & Products Association was also completed. Staff members are currently working to combine their efforts with the Florida Department of Labor and Employment Security to produce an enhanced set of detailed forecasts during the coming year. Staff members published two articles in academic journals, presented a paper at a professional meeting, made five presentations to state and local groups in Florida, and served on the editorial boards of two journals and on two committees for professional organizations. Carol West served as a member on the National Academy of Science's Committee on Assessing the Costs of Natural Disasters and co-authored its final report. Staff members are currently doing research on the performance of housing start forecasts; the determinants of regional forecasting errors; the merging of short- and long-range forecasts; and local fiscal policies.

The **Survey Program** conducts monthly telephone surveys of approximately 500 Floridians. Data from these surveys are used both for academic research and to create a consumer confidence index for Florida.

The Survey Program also conducts customized surveys that are independent of the regular monthly survey. These surveys permit us to greatly expand our level of service and collect a great deal of valuable data for faculty members, state and local government agencies, and Florida businesses. During the past year, clients have included the Department of Elder Affairs, Department of Corrections, Public Service Commission, Agency for Health Care Administration, the National Institutes of Health, and various colleges or departments at the University of Florida, Florida State University, Vanderbilt University, and the University of North Florida. These surveys not only collected a great deal of policy-relevant data, but also generated gross revenues of \$472,000 in 1998-1999. Members of the Survey Program had one article published in an academic journal, presented two papers at professional meetings, and made two presentations to groups in Florida. Chris McCarty is currently serving as Principal Investigator on a National Science Foundation grant to study social networks. Research in progress focuses on the estimation of network size and the development of data infrastructure in Africa. A recent expansion in the number of work stations in the Survey Lab will make it possible to take on more and larger projects in the future.

The **Policy Studies Program** continued its analysis of the Florida Price of Living Index (FPLI), which guides the allocation of funds to the state's 67 school districts. The FPLI is the most thorough county-by-county price index found in any state. This year the study focused on: 1) Replacing the on-site price survey with a more efficient telephone survey, 2) Using the Florida portion of the national wage survey to replace or supplement the current form of the FPLI, and 3) Working with the Department of Revenue to enhance the housing data used in constructing the FPLI. Staff members published two articles and three book reviews in academic journals, refereed two articles for academic journals, and made 14 presentations on the Florida economy to a variety of government, civic, and business groups around the state. Current research projects include the causes of reduced government regulation, hedonic models of apartment rents, and the effectiveness of increased spending on K-12 education.

The **Information/Publication Services Program** published eight serial volumes during the past year: *1998 Florida Statistical Abstract*, *1998 County Rankings*, *1998 Florida County Perspective*, *1998 Florida Personal Income Handbook*, *1999 Florida and the Nation*, *1999 Housing Starts and*

Permits, Building Permit Activity Report, and Gross and Taxable Sales. New CD formats were introduced for several of these volumes. During the past year, staff members redesigned the BEBR's web site, fielded more than 5,000 information calls, and provided editorial and marketing services for other BEBR publications and products. Staff members were active in professional organizations such as the University of Florida Communications Network and the Association for University Business and Economic Research (AUBER), serving the latter as panelist and session coordinator at the annual conference and writing articles for its newsletter. Eve Irwin was appointed as a member of the AUBER Board of Directors for 1999-2003

The **Administrative Services Program** provided the background support that held the BEBR together, making it possible for staff members in the other programs to do their work. Administrative staff members managed the BEBR budget, tracked all revenues and expenditures, maintained and upgraded office facilities and equipment, provided technical support for all computer and network programs, maintained personnel files and appointments, handled orders and shipments of BEBR publications, provided oversight for compliance with University rules and regulations, and performed many other essential office tasks. Special accomplishments during the past year included a renovation of the offices in Matherly 225, the addition and configuration of 16 new work stations for the Survey Lab, and an upgrade of the email system.

The following tables provide a quick overview and summary of the BEBR's activities and output during the past year. For additional information on our products, services, and research activities, check out our website at www.bibr.ufl.edu or give us a call at (352) 392-0171.

**Bureau of Economic and Business Research
June 1999**

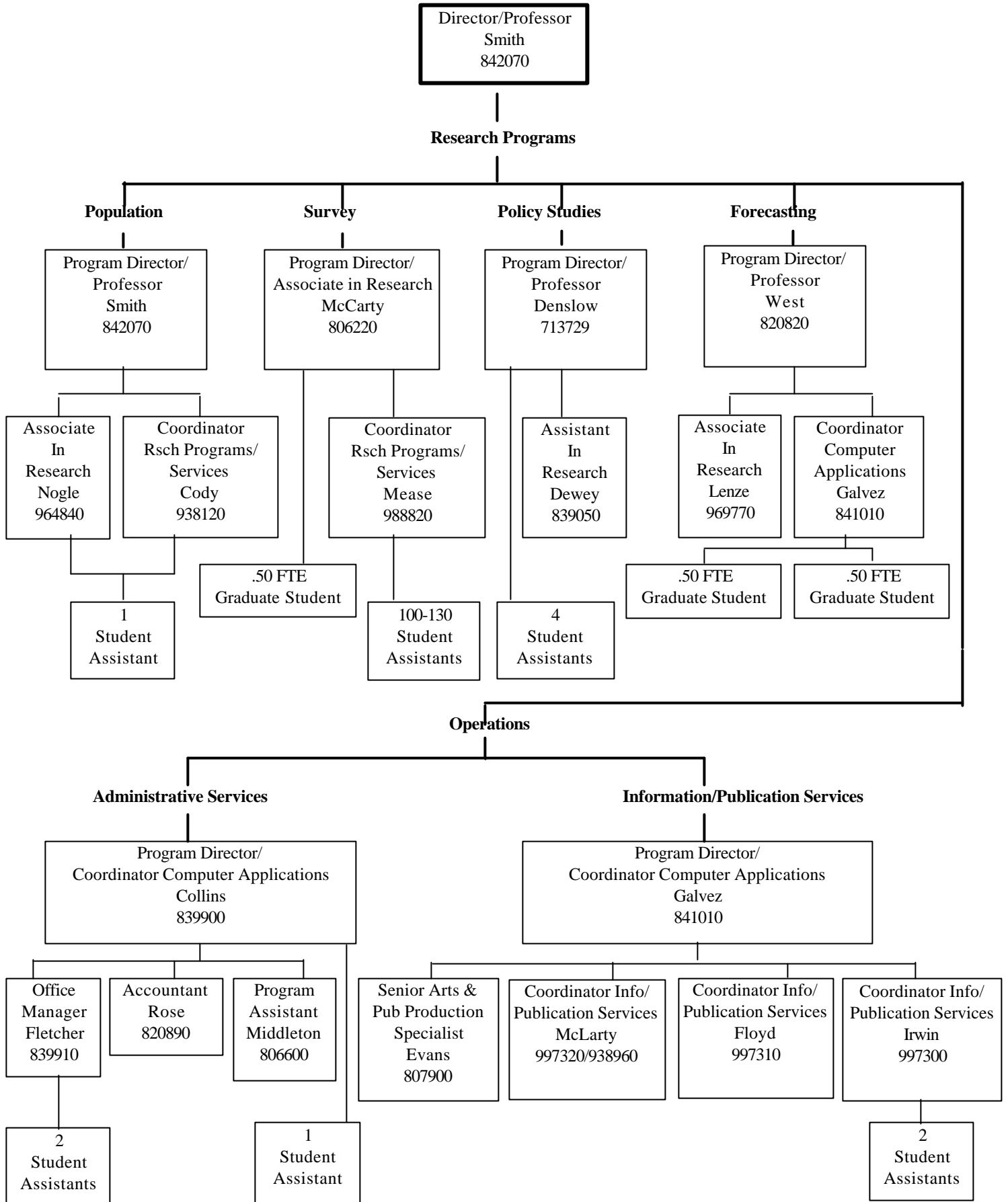


Table 1. Academic/Professional Publications, 1998-99

Denslow, David

“The Real Wage, Output, and Contracting in High Inflation,” *Economic Review*, 1999 (forthcoming), co-author.

Book review of Alan Dye, “Cuban Sugar in the Age of Mass Production,” *Business History Review*, Winter, 645–647, 1998.

Book review of Adriana Amado, “Disparate Regional Development in Brazil,” *Luso-Brazilian Review*, November, 371-372, 1999.

Dewey, Jim

“The Ineffectiveness of School Inputs: A Product of Misspecification?,” *Economics of Education Review* (forthcoming), co-author.

Book review of Werner Troesken, “Why Regulate Utilities,” *Public Choice*, 98: 470-473, 1999.

Lenze, David

“An Evaluation of *Ex Ante* Substate Long-term Forecast Accuracy and Efficiency,” *International Regional Science Review* (forthcoming).

Mease, Ken

“Foreign Aid Agencies 1965-1995: A Comparative Assessment,” in Goran Hyden & Rwekaza Mukandala, eds. *Foreign Aid: Comparing China, Sweden, and the United States 1965-1995*, Macmillan, London, 1999, co-author.

Nogle, June

“Settlement Assistance and Intermarriage for Immigrants to Canada,” *Immigrants and Minorities*, 17(2): 23-35, 1998.

Smith, Stanley K.

“In Defense of the Net Migrant,” *Journal of Economic and Social Measurement*, 24, 1999, (forthcoming), co-author.

**Table 1. Academic/Professional Publications, 1998-99
(continued)**

“Population Growth and Demographic Change in Florida,” in Lance de Haven Smith and David Colburn, eds. *Amid Political, Cultural and Civic Diversity: Building a Sense of Statewide Community in Florida*. Dubuque, Kendall-Hunt, 1998.

Measuring a Changing Nation: Modern Methods for the 2000 Census, National Academy Press, Washington, DC, 1999, co-author.

West, Carol

“Regional Housing Start Forecast Performance,” *Review of Regional Studies*, (forthcoming), co-author.

The Impacts of Natural Disasters: A Framework for Loss Estimation, National Academy Press, Washington DC, 1999, co-author.

Table 2. Technical/Analytical/Data Publications, 1998-99

Cody, Scott

“Number of Households and Average Household Size in Florida and Its Counties: April 1, 1999,”
Population Studies, No. 122 (January 1999), co-author.

Florida Estimates of Population: April 1, 1998 (February 1999), co-author.

Denslow, David

“The Florida Price Level Index,” report prepared for the Florida Department of Education
(January 1999), co-author.

Dewey, Jim

“The Florida Price Level Index,” report prepared for the Florida Department of Education (January
1999), co-author.

“The Impact of Dropping Transportable Commodities from the FPLI,” preliminary report for the
Florida Department of Education (April 1999).

Floyd, Susan

The Florida Personal Income Handbook (August 1998), editor.

1998 Florida Statistical Abstract (October 1998), editor.

Florida County Rankings, 1998 (January 1999), editor.

“Getting the Most From Your State Abstract,” *AUBER Newsletter* (March 1999).

Florida and the Nation, 1999 (April 1999), editor.

Galvez, Janet

1998 Florida Statistical Abstract (October 1998), editor.

County Perspective, 1998 (February 1999), editor.

Table 2. Technical/Analytical/Data Publications, 1998-99
(continued)

“Florida Economic Review,” *Concrete Market Update and Economic Review* (1st-4th quarter 1998), co-author.

Gross and Taxable Sales Reports, monthly and annual editions (1998-99), editor.

Building Permit Activity in Florida, monthly and annual editions (1998-99), editor.

Florida County Rankings, 1998 (January 1999), editor.

Florida and the Nation, 1999 (April 1999), editor.

Housing Starts, annual edition (1998), editor.

Irwin, Eve

1998 Florida Statistical Abstract (October 1998), managing editor.

Florida County Rankings, 1998 (January 1999), managing editor.

County Perspective, 1998 (February 1999), editor.

Florida and the Nation, 1999 (April 1999), managing editor.

Lenze, David

The Florida Long-term Economic Forecast, Vol. 1, State and MSAs, (1998), co-author.

The Florida Long-term Economic Forecast, Vol. 2, State and Counties, (1998), co-author.

“National Economic Review,” *Concrete Market Update and Economic Review* (1st – 4th quarter 1998).

McLarty, Carol

Building Permit Activity in Florida, monthly and annual editions (1998-99), editor.

Gross and Taxable Sales Reports, monthly and annual editions (1998-99), editor.

**Table 2. Technical/Analytical/Data Publications, 1998-99
(continued)**

Nogle, June

“Population Projections by Age, Sex and Race for Florida and its Counties, 1997-2010,” *Florida Population Studies*, No. 121 (July 1998), co-author.

“Projections of Florida Population by County, 1998-2020,” *Florida Population Studies*, No. 123 (January 1999), co-author.

Smith, Stanley K.

“Population Projections by Age, Sex and Race for Florida and its Counties, 1997-2010,” *Florida Population Studies*, No. 121 (July 1998), co-author.

“Projections of Florida Population by County, 1998-2020,” *Florida Population Studies*, No. 123 (January 1999), co-author.

“Number of Households and Average Household Size in Florida and Its Counties: April 1, 1998,” *Population Studies*, No. 122 (January 1999), co-author.

Florida Estimates of Population: April 1, 1998 (February 1999), co-author.

West, Carol

The Florida Long-term Economic Forecast, Vol. 1, State and MSAs, (1998), co-author.

The Florida Long-term Economic Forecast, Vol. 2, State and Counties, (1998), co-author.

“Florida Economic Review,” *Concrete Market Update and Economic Review* (1st – 4th quarter 1998).

Table 3. Papers Presented at Academic/Professional Meetings, 1998-99

Denslow, David

“Teaching Large Classes,” Stanford University Conference on Teaching, Palo Alto, CA, December 1998.

Lenze, David

“An Evaluation of *Ex Ante* Substate Long-term Economic Forecast Accuracy and Efficiency,” North American Regional Science Association International Meeting, Santa Fe, New Mexico, November 1998.

McCarty, Chris

“Comparing Two Different Methods of Estimating Network Size,” International Social Network Meeting, Barcelona, July 1998.

“Transmission Effects in Estimating Network Size,” Sunbelt Social Network Conference, Charleston, February 1999.

Nogle, June

“Population Data Resources at the University of Florida’s Bureau of Economic and Business Research,” Florida Epidemiology Association Meeting, Tallahassee, July 1998.

“Women’s Labor Force Participation Among Five Hispanic Immigrant Groups,” Population Association of America Meeting, New York City, March 1999, co-author.

“Immigrants and Nonimmigrants in Florida and Metropolitan Miami,” Association of American Geographers Meeting, Honolulu, March 1999, co-author.

“Two Examples of Using StataTM for Demographic Analysis,” Federal-State Cooperative Program Meeting, New York City, March 1999.

Smith, Stanley K.

“Responding to a Budget Crunch: Staying Alive in the 90s,” AUBER Conference, Portland, ME, October 1998.

Table 4. Presentations to Civic/Government/Business Groups, 1998-99**Denslow, David**

“Land-Use Demand in Florida,” Florida Forestry Association, Panama City, September 1998.

“National Economic Outlook,” WLUS, Gainesville, October 1998.

“Jacksonville Economic Outlook,” North Jacksonville Development Council, Jacksonville, October 1998.

“Economic Outlook,” Minority Business Society, Gainesville, October 1998.

“National Outlook,” Florida Elks Charity Investment Committee, Gainesville, October 1998.

“Ocala Economic Outlook,” Ocala Economic Development Council, Ocala, January 1999.

“National Economic Outlook,” Cultural Marble Society, St. Petersburg, January 1999.

“Polk County Economic Outlook,” Lakeland Outlook Breakfast, Lakeland, January 1999.

“National Economic Outlook,” Florida Institute of CPA’s, Tampa, February 1999.

“Florida Economic Outlook,” Mortgage Bankers Association, Jacksonville, February 1999.

“Florida Economic Outlook,” DIS Advisory Board, Gainesville, March 1999.

“Florida Economic Outlook,” Florida Real Estate Conference, Miami, April 1999.

“Bradenton Economic Outlook,” Bradenton Kiwanis, Bradenton, April 1999.

Lenze, David

“What’s Down the Road? An Economic Forecast for Citrus County 1995-2010,” 1998 Leadership Citrus Program, Crystal River, June 1998.

“The Long-Term Outlook for the Tampa-St. Petersburg-Clearwater MSA, 1995-2010,” Sertoma Club, Tampa, June 1998.

**Table 4. Presentations to Civic/Government/Business Groups, 1998-99
(continued)**

“The Long-Term Outlook for the Jacksonville MSA, 1995-2010,” Southside Businessmen’s Association, Jacksonville, October 1998.

“Economic Update: Nation, State, and Florida Concrete Products Association Regions,” Florida Concrete Products Association, Orlando, October 1998.

“The Economic Outlook for the Ocala MSA, 1995-2010, Ocala/Marion County Chamber of Commerce, Ocala, April 1999.

McCarty, Chris

“Survey on Affordability of Local Telephone Rates,” Public Service Commission, Tallahassee, September 1998.

“CATI Survey Methodology,” Technical Advisory and Policy Advisory Panels for the Florida Survey of Uninsured, Tallahassee, January 1999.

Nogle, June

“Trends and Prospects for Florida’s Population, Leadership 2000 Statewide Summit, Gainesville, October 1998.

Table 5. Contracts and Grants Awarded, 1998-99*

Denslow, David

“Florida Price of Living Index”, Florida Legislature, \$10,000

McCarty, Chris

Surveys conducted for:

Florida Agency for Health Care Administration	\$300,000
UF-Institute for Child Health Policy	\$52,000
Florida State University	\$40,000
Florida State University	\$26,000
National Institutes of Health	\$23,250
Florida Department of Elder Affairs	\$23,010
UF-IFAS	\$19,260
Florida Public Service Commission	\$15,000
Florida Department of Corrections	\$9,500
Info Tech Inc.	\$9,000
Florida Tourism	\$8,562
Gainesville Regional Utilities	\$7,000
National Science Foundation	\$6,325
Florida Department of Education	\$6,000
H. Russell Bernard	\$6,000
Florida Dept of Corrections	\$6,000
Florida State University	\$5,000
UF-Dept of Forestry	\$5,000
Vanderbilt University	\$5,000
Lee County Sheriff's Office	\$4,400
University of North Florida	\$4,000
The News Journal	\$3,800
Market Source Corporation	\$3,500
Alachua County Environmental Protection Agency	\$3,500
Pinellas County	\$3,500
Palm Beach County	\$3,200
UF-Dept of Forestry	\$2,000
UF-Food & Resource Economics	\$1,200
Market Source Corporation	\$1,100
Market Source Corporation	\$1,100
Florida Dept of Elder Affairs	\$1,000
Market Source Corporation	\$1,000
UF-College of Business Administration	\$650
Market Source Corporation	\$250
FSU-Collins Center for Public Policy	\$200
UF-Vet School	\$100

Table 5. Contracts and Grants, 1998-99*
(continued)

Nogle, June

“Immigration Study for Florida and Dade County,” University of Miami, \$26,320

Smith, Stanley K.

“Florida Population Research,” Florida Legislature, \$246,750

West, Carol T.

“Florida Long-Run Econometric Forecasting Models,” Florida Department of Labor and Employment Security, \$180,000

“Florida Concrete and Product Usage Survey,” Florida Concrete and Products Association, \$31,380

*Note: These were contracts and grants awarded for the 1998-1999 fiscal year. Not all payments were received during that 12-month period.

Table 6. Courses Taught, 1998-99

Denslow, David A.

Summer 98	Macro Principles	ECO 2013	3 credits	1200 students
Fall 98	Macro Principles	ECO 2013	3 credits	1149 students
Spring 99	Macro Principles	ECO 2013	3 credits	1994 students

McCarty, Chris

Spring 99	Social Network Analysis	ANT 6933	3 credits	10 students
-----------	-------------------------	----------	-----------	-------------

Smith, Stanley K.

Fall 98	Population Economics	ECP 3113	4 credits	35 students
---------	----------------------	----------	-----------	-------------

Filename: annrpt99t
Directory: T:\dote\BEBRreports
Template: C:\Program Files\Microsoft Office\Office\Normal.dot
Title: _Bureau of Economic and Business Research
Subject:
Author: Janet Fletcher
Keywords:
Comments:
Creation Date: 05/11/00 7:34 AM
Change Number: 4
Last Saved On: 05/11/00 7:41 AM
Last Saved By: dote
Total Editing Time: 8 Minutes
Last Printed On: 05/16/00 12:25 PM
As of Last Complete Printing
Number of Pages: 18
Number of Words: 3,595 (approx.)
Number of Characters: 20,494 (approx.)