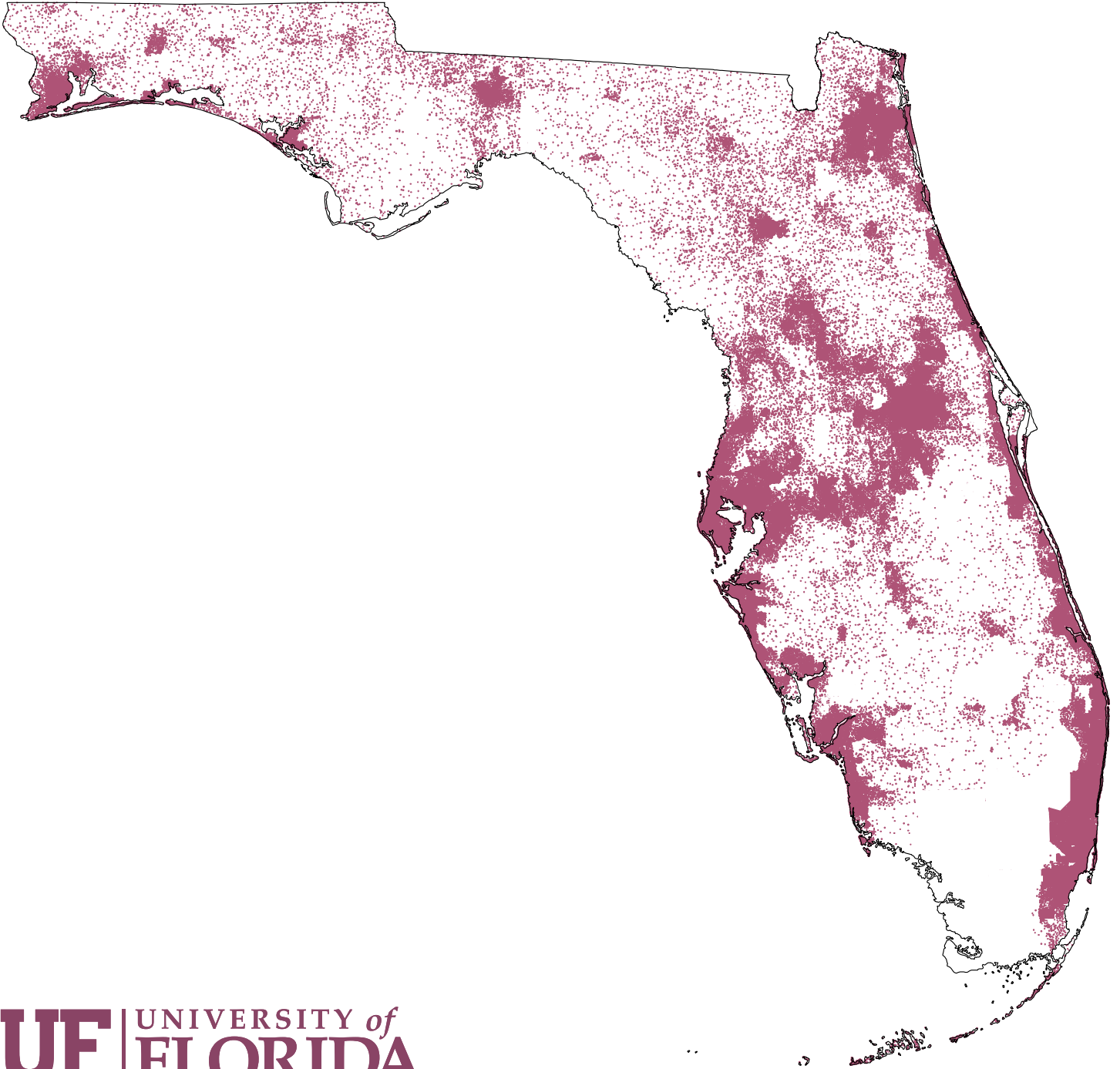


Florida Estimates of Population 2015



Florida Estimates of Population 2015

April 1, 2015

**Bureau of Economic and Business Research
College of Liberal Arts and Sciences
University of Florida
720 SW 2nd Avenue, Suite 150
P.O. Box 117148
Gainesville, Florida 32611-7148**

Phone: (352) 392-0171

Fax: (352) 392-4739

www.bebr.ufl.edu

Copyright © 2015 by the University of Florida

University of Florida

W. Kent Fuchs, President

College of Liberal Arts and Sciences

Dave Richardson, Dean

Bureau of Economic and Business Research

Christopher McCarty, Director

Population Program

Stefan Rayer, Population Program Director

Richard Doty, GIS Coordinator/Research Demographer

Suzanne Roulston-Doty, GIS Project Manager/Research Demographer

Stanley K. Smith, Professor

Ying Wang, Research Demographer



Table of Contents

Methodology Section _____	1
Table 1. Estimates of Population by County and City in Florida, April 1, 2015 _____	5
Table 2. Components of Population Change for Counties in Florida, 2010 to 2015 _____	19
Table 3. Population and Population Change for Counties in Florida, 1990 to 2015 _____	21
Table 4. Population and Population Change For Metropolitan Statistical Areas In Florida, 1990 to 2015 ____	23
Table 5. Population Change by Decade for Regional Planning Councils in Florida, 1990 to 2015 _____	25
Table 6. Rank of Florida Counties by Population Size in 2015 and Population Distribution, 1990 to 2015 __	27
Table 7. Rank of Florida Counties by Percent Change in Population, 2010 to 2015 _____	29
Figure 1. Percent Change in Population, 2010 to 2015 _____	30
Table 8. Rank of Florida Counties by Population Change, 2010 to 2015 _____	31
Figure 2. Population Change, 2010 to 2015 _____	32
Table 9. Rank of Top 100 Cities in Florida by Population Size, 2000 to 2015 _____	33
Table 10. Rank of Top 100 Cities in Florida by Percent Change in Population, 2010 to 2015 _____	35
Table 11. Rank of Top 100 Cities in Florida by Population Change, 2010 to 2015 _____	36
Table 12. Age Distribution (Percentage) of the Population of Florida and Its Counties, 1990 to 2014 _____	37
Table 13. Rank of Florida Counties by Percent of Population Aged 17 and Younger, 2014 _____	41
Figure 3. Percent of Population Aged 17 and Younger, 2014 _____	42
Table 14. Rank of Florida Counties by Percent of Population Aged 65 and Older, 2014 _____	43
Figure 4. Percent of Population Aged 65 and Older, 2014 _____	44
Table 15. Black Population of Florida Counties Ranked by Percent Black, 2014 _____	45
Figure 5. Black Population as Percent of Total Population, 2014 _____	46
Table 16. Hispanic Population of Florida Counties Ranked by Percent Hispanic, 2014 _____	47
Figure 6. Hispanic Population as Percent of Total Population, 2014 _____	48
Table 17. Population per Square Mile for Florida Counties, 2000 to 2015 _____	49
Figure 7. Population per Square Mile, 2015 _____	51
Table 18. Location of Florida Cities _____	52

Methodology for Florida Estimates of Population: April 1, 2015

Guidelines for Population Estimates

This report provides population estimates for Florida and each of its counties and incorporated cities, as of April 1, 2015. These estimates were prepared under a contractual agreement between the Florida Legislature and the Bureau of Economic and Business Research (BEBR) at the University of Florida. The basic guidelines for producing population estimates were established by the 1972 Florida Legislature in Chapter 23, Section 23.019, Florida Statutes, entitled "Population census determination." These guidelines have been revised several times since 1972, the most recent being Section 186.901 of the 2011 Florida Statutes, which states:

(1) The Office of Economic and Demographic Research shall annually provide to the Executive Office of the Governor population estimates of local governmental units as of April 1 of each year, utilizing accepted statistical practices. The population of local governments provided by the Office of Economic and Demographic Research shall apply to any revenue sharing formula with local governments under the provisions of ss. 218.20-218.26, part II of chapter 218. The Office of Economic and Demographic Research shall additionally provide the Executive Office of the Governor population estimates for municipal annexations or consolidations occurring during the period April 1 through February 28, and the Executive Office of the Governor shall include these estimates in its certification to the Department of Revenue for the annual revenue-sharing calculation.

(2) (a) Population shall be computed as the number of residents, employing the same general guidelines used by the United States Bureau of the Census.

(b) For the purpose of revenue-sharing distribution formulas and distribution proportions for the local government half-cent sales tax, inmates and patients residing in institutions operated by the Federal Government, the Department of Corrections, the Department of Health, or the Department of Children and Family Services shall not be considered to be

residents of the governmental unit in which the institutions are located.

(c) Nothing herein shall be construed to prohibit the separate determination of any categories of persons, whether resident or nonresident.

(3) In cases of annexation or consolidation, local governments shall be required to submit to the Executive Office of the Governor, within 30 days following annexation or consolidation, a statement as to the population census effect of the action.

(4) Estimates of inmates and patients pursuant to paragraph (2)(b) shall be separately stated in population reports issued pursuant to this section.

It should be noted that these estimates refer solely to permanent residents of the state of Florida. According to Census Bureau guidelines, one's permanent residence is the place one lives and sleeps most of the time. Consequently, temporary residents such as tourists and snowbirds are not included in these estimates. Many places in Florida have large numbers of temporary residents during certain times of the year, making their total de facto populations much larger than their permanent resident populations.

Estimation Methodology

BEBR makes population estimates for every county and subcounty area in Florida, with subcounty areas defined as incorporated cities, towns and villages, and the unincorporated balance of each county. County estimates are calculated as the sum of the subcounty estimates for each county and the state estimate is calculated as the sum of the county estimates.

The estimates are produced using the housing unit method, in which changes in population are based on changes in occupied housing units (or households). This is the most commonly used method for making

local population estimates in the United States because it can utilize a wide variety of data sources, can be applied at any level of geography, and can produce estimates that are at least as accurate as those produced by any other method.

The foundation of the housing unit method is the fact that almost everyone lives in some type of housing structure, whether a traditional single family unit, an apartment, a mobile home, a college dormitory, or a state prison. The population of any geographic area can be calculated as the number of occupied housing units (households) times the average number of persons per household (PPH), plus the number of persons living in group quarters such as college dormitories, military barracks, nursing homes, and prisons:

$$P_t = (H_t \times PPH_t) + GQ_t$$

where P_t is the population at time t , H_t is the number of occupied housing units at time t , PPH_t is the average number of persons per household at time t , and GQ_t is the group quarters population at time t . Estimates of the number of people without permanent living quarters (e.g., the homeless population) are included in estimates of the group quarters population.

This is an identity, not an estimate. If these three components were known exactly, the total population would also be known. The problem, of course, is that these components are almost never known exactly. Rather, they must be estimated from various data sources, using one or more of several possible techniques. In this report, we describe the data and techniques used to develop population estimates for Florida's counties and subcounty areas for April 1, 2015.

Households

Census definitions require a person to be counted as an inhabitant of his/her usual place of residence, which is generally construed to mean the place where he/she lives and sleeps most of the time. This place is not necessarily the same as one's legal or voting residence. A household is the person or group of people occupying a housing unit; by definition, the number of occupied housing units is the same as

the number of households. Households refer solely to permanent residents and a housing unit is classified as vacant even when it is continuously occupied, if all the occupants are temporary residents staying only for a few days, weeks, or months.

BEBR uses three different data sources to estimate the number of households in Florida. Our primary data source is active residential electric customers. We collect these data from each of the state's 54 electric utility companies. Households can be estimated by constructing a ratio of households to active residential electric customers using data from the most recent census year (e.g., 2010) and multiplying that ratio times the number of active residential customers in some later year (e.g., 2015). This procedure assumes that no changes have occurred in electric company bookkeeping practices, in the vacancy rate of active residential electric customers, or in the proportion of those customers who are permanent residents. Although changes do occur, they are generally fairly small. In some places we adjust the household/electric customer ratio to account for likely changes in the vacancy rate or the proportion of housing units occupied by permanent residents.

We sometimes filter electric customer data to exclude limited use customers. Limited use customers are those using less than a specified amount of electricity during certain months of the year. We believe these customers represent seasonal or other part-time residents and excluding them may give a more accurate measure of permanent residents. These data are not available for all areas of the state, but in places in which the data are available and appear to be reliable we may use them in conjunction with other data sources.

Our second data source is residential building permits, as collected and distributed by the U.S. Department of Commerce. The housing inventory in 2015 for a city or county that issues building permits can be estimated by adding permits issued since 2010 to the units counted in the 2010 census and subtracting units lost to destruction, demolition, or conversion to other uses. The time lag between the issuance of a permit and the completion of a unit is assumed to be three months for single-family units and fifteen months for multifamily units. Building

permits are not issued for mobile homes, but proxies can be derived from records of shipments to mobile home dealers in Florida. Creating a housing inventory for an entire county requires complete permit data for every permitting agency within the county. Although such data are not always available, coverage is sufficient in most Florida cities and counties to provide useful information.

There are no readily available data sources providing comprehensive up-to-date information on occupancy rates that are as reliable as those produced by the latest decennial census. Accurate information can be obtained through special censuses or large sample surveys, but in most instances these methods are too expensive to be feasible. A common solution is to use the occupancy rates reported in the most recent census. This is the procedure we follow in most places, but in some places we make adjustments to account for factors reflecting changes in occupancy rates over time. These factors may include data from the U.S. Census Bureau's American Community Survey (ACS) showing upward or downward trends over time since the last decennial census, changes in the proportion of seasonal population, etc.

The product of the inventory figure and the occupancy rate provides an estimate of the number of households. There are several potential problems with this estimate. Time lags between the issuance of permits and the completion of units may vary from place to place and from year to year. The proportion of permits resulting in completed units is usually unknown. Data on demolitions and conversions are incomplete and data on mobile homes must be estimated indirectly. Reliable estimates of changes in occupancy rates are generally unavailable. Certificate-of-occupancy data can eliminate problems related to completion rates and time lags but not those related to occupancy rates, demolitions, and conversions. Although these problems limit the usefulness of the data in some places, building permit data often provide reasonably accurate estimates of households.

Our third data source for estimates is the number of homestead exemptions reported by the Florida Department of Revenue. Households can be estimated by constructing a ratio of households to exemptions using data from the most recent census year (e.g., 2010) and multiplying that ratio times the number

of exemptions in some later year (e.g., 2015). An important advantage of these data is that they cover only housing units occupied by permanent residents, thereby excluding the impact of seasonal and other non-permanent residents. The primary disadvantage is that the data do not include households occupied by renters or other non-homeowners, but those households often change in proportion to the households with homestead exemptions. Homestead exemption data are available for individual property parcels and can be summarized by city and county using Geographic Information Systems (GIS) software and data.

Electric customer, building permit, and homestead exemption data all provide useful information regarding changes in households. Previous research on BEBR population estimates has shown that household estimates based on electric customer data are – on average – more accurate than those based on building permit data. However, we use our professional judgment to decide which data source(s) to use in each specific county and subcounty area. In many instances, we use averages of estimates from more than one data source. We also use GIS-based property parcel data (along with year built information and detailed land use codes from the Florida Department of Revenue) to evaluate which data source is best for a particular place.

Persons per Household

The second component of the housing unit method is the average number of persons per household (PPH). Florida's PPH dropped steadily from 3.22 in 1950 to 2.46 in 1990 but then leveled off, remaining constant between 1990 and 2000 before rising to 2.48 in 2010. There is a substantial amount of variation among local areas in Florida, with values in 2010 ranging from 2.1 to 3.1 for counties and from less than 1.4 to more than 4.0 for subcounty areas. PPH values have risen over time in some cities and counties and declined in others.

For each county and subcounty area, we base our PPH estimates on the local PPH value in the most recent census (e.g., 2010), the state- and county-level change in PPH since that census (as measured by the American Community Survey), and the local change in the mix of single-family, multifamily, and mobile

home units since that census. In some instances, we use indirect indicators of changes in PPH to adjust the estimates (e.g., changes in racial composition). Again, we use our professional judgment to decide which data sources and techniques to use in each county and subcounty area.

Group Quarters Population

The household population is calculated as the product of households and PPH. To obtain an estimate of the total population, we must add an estimate of the group quarters population. In most places, we estimate the group quarters population by assuming that it accounts for the same proportion of total population in 2015 as it did in 2010. For example, if the group quarters population accounted for 2% of the total population in 2010, we assume that it accounted for 2% in 2015. In places where the group quarters population represents a substantial proportion of the total population, we collect data directly from the administrators of the major group quarters facilities. Inmates in state and federal institutions are accounted for separately in all local areas; these data are available from the Federal Bureau of Prisons, the Florida Department of Corrections, the Florida Department of Veteran Affairs, the Florida Agency for Persons with Disabilities, the Florida Department of Health, the Florida Department of Juvenile Justice and the Florida Department of Children and Families. The total population estimate is made by adding the estimate of the group quarters population to the estimate of the household population.

Conclusion

The population estimates produced by BEBR are calculated by multiplying the number of households by the average number of persons per household and adding the number of persons living in group quarters. This methodology is conceptually simple but effective. It utilizes data that are available for all local areas, its components respond rapidly to population movements, and it can be applied systematically and uniformly everywhere in the state. A comparison of population estimates with census results for 1980, 1990, 2000, and 2010 showed the BEBR estimates to be quite accurate, especially when compared to other sets of estimates. We believe the housing unit method is the most

effective method for making subcounty and county population estimates in Florida and that it produces reliable estimates that provide a solid foundation for budgeting, planning, and analysis.

Note

The population numbers for 1990 and 2000 shown in this report include all official corrections made by the U.S. Census Bureau. Corrections for 2010 include all corrections received from the Census Bureau's Count Question Resolution program through February 11, 2014. Consequently, the census numbers for some cities or counties may differ from those published previously.

Acknowledgement

Funding for these estimates and this publication was provided by the Florida Legislature.

Table 1. Estimates of Population by County and City in Florida: April 1, 2015

County, City, and State	April 1 2015 Estimate	Total Change	April 1 2010 Census	Revenue Sharing Use Only	
				Inmates	Estimates less Inmates April 1, 2015
Alachua County	254,893	7,557	247,336	1,290	253,603
Alachua	9,788	729	9,059	0	9,788
Archer	1,140	22	1,118	0	1,140
Gainesville*	127,955	3,479	124,476	842	127,113
Hawthorne	1,370	-47	1,417	0	1,370
High Springs	5,742	392	5,350	0	5,742
La Crosse	373	13	360	0	373
Micanopy	593	-7	600	0	593
Newberry	5,360	410	4,950	0	5,360
Waldo	951	-64	1,015	0	951
UNINCORPORATED*	101,621	2,630	98,991	448	101,173
Baker County	27,017	-98	27,115	2,098	24,919
Glen St. Mary	435	-2	437	0	435
Macclenny	6,430	56	6,374	0	6,430
UNINCORPORATED	20,152	-152	20,304	2,098	18,054
Bay County	173,310	4,458	168,852	1,176	172,134
Callaway	14,681	276	14,405	0	14,681
Lynn Haven	19,287	794	18,493	0	19,287
Mexico Beach	1,136	64	1,072	0	1,136
Panama City*	35,835	330	35,505	124	35,711
Panama City Beach	12,467	449	12,018	0	12,467
Parker	4,409	92	4,317	0	4,409
Springfield	9,097	194	8,903	0	9,097
UNINCORPORATED*	76,398	2,259	74,139	1,052	75,346
Bradford County	27,310	-1,210	28,520	2,926	24,384
Brooker	322	-16	338	0	322
Hampton	477	-23	500	0	477
Lawtey	711	-19	730	0	711
Starke	5,442	-7	5,449	11	5,431
UNINCORPORATED	20,358	-1,145	21,503	2,915	17,443
Brevard County	561,714	18,338	543,376	211	561,503
Cape Canaveral	10,084	172	9,912	0	10,084
Cocoa	18,313	1,173	17,140	0	18,313
Cocoa Beach	11,182	-49	11,231	0	11,182
Grant-Valkaria	3,949	99	3,850	0	3,949
Indialantic	2,787	67	2,720	0	2,787
Indian Harbour Beach	8,386	161	8,225	0	8,386
Malabar	2,796	39	2,757	0	2,796
Melbourne*	79,600	3,395	76,205	30	79,570
Melbourne Beach	3,078	-23	3,101	0	3,078
Melbourne Village	664	2	662	0	664
Palm Bay	107,481	4,291	103,190	0	107,481

Table 1. Estimates of Population by County and City in Florida: April 1, 2015

(Continued)

County, City, and State	April 1 2015 Estimate	Total Change	April 1 2010 Census	Revenue Sharing Use Only	
				Inmates	Estimates less Inmates April 1, 2015
Brevard County (Continued)					
Palm Shores	975	75	900	0	975
Rockledge	26,165	1,239	24,926	27	26,138
Satellite Beach	10,403	294	10,109	0	10,403
Titusville	45,325	1,564	43,761	24	45,301
West Melbourne	20,250	1,895	18,355	0	20,250
UNINCORPORATED*	210,276	3,944	206,332	130	210,146
Broward County					
Coconut Creek	56,593	3,684	52,909	0	56,593
Cooper City	33,176	4,629	28,547	6	33,170
Coral Springs	124,282	3,186	121,096	0	124,282
Dania Beach	30,644	1,005	29,639	0	30,644
Davie	96,908	4,916	91,992	6	96,902
Deerfield Beach	76,662	1,644	75,018	0	76,662
Fort Lauderdale	175,123	9,602	165,521	247	174,876
Hallandale Beach	38,424	1,311	37,113	0	38,424
Hillsboro Beach	1,867	-8	1,875	0	1,867
Hollywood	144,926	4,158	140,768	0	144,926
Lauderdale-By-The-Sea	6,056	0	6,056	0	6,056
Lauderdale Lakes	34,201	1,608	32,593	0	34,201
Lauderhill	69,651	2,764	66,887	0	69,651
Lazy Lake	24	0	24	0	24
Lighthouse Point	10,358	14	10,344	0	10,358
Margate	55,851	2,567	53,284	0	55,851
Miramar	132,096	10,055	122,041	0	132,096
North Lauderdale	43,232	2,209	41,023	0	43,232
Oakland Park	43,390	2,027	41,363	0	43,390
Parkland	28,128	4,166	23,962	0	28,128
Pembroke Park	6,236	134	6,102	0	6,236
Pembroke Pines*	159,922	5,903	154,019	560	159,362
Plantation	87,496	2,541	84,955	0	87,496
Pompano Beach	106,260	6,415	99,845	143	106,117
Sea Ranch Lakes	670	0	670	0	670
Southwest Ranches	7,389	44	7,345	0	7,389
Sunrise	88,630	4,191	84,439	0	88,630
Tamarac	62,264	1,837	60,427	0	62,264
Weston	65,734	401	65,333	0	65,734
West Park	14,499	343	14,156	0	14,499
Wilton Manors	12,160	528	11,632	0	12,160
UNINCORPORATED*	14,515	-2,573	17,088	84	14,431
Calhoun County					
Altha	568	32	536	0	568
Blountstown	2,468	-46	2,514	0	2,468
UNINCORPORATED	11,513	-62	11,575	1,617	9,896

Table 1. Estimates of Population by County and City in Florida: April 1, 2015

(Continued)

County, City, and State	April 1 2015 Estimate	Total Change	April 1 2010 Census	Revenue Sharing Use Only	
				Inmates	Estimates less Inmates April 1, 2015
Charlotte County	167,141	7,163	159,978	1,261	165,880
Punta Gorda	17,675	1,034	16,641	0	17,675
UNINCORPORATED	149,466	6,129	143,337	1,261	148,205
Citrus County	141,501	265	141,236	137	141,364
Crystal River	3,112	4	3,108	0	3,112
Inverness	7,227	17	7,210	0	7,227
UNINCORPORATED	131,162	244	130,918	137	131,025
Clay County	201,277	10,412	190,865	0	201,277
Green Cove Springs	7,043	135	6,908	0	7,043
Keystone Heights	1,367	17	1,350	0	1,367
Orange Park	8,510	98	8,412	0	8,510
Penney Farms	746	-3	749	0	746
UNINCORPORATED	183,611	10,165	173,446	0	183,611
Collier County	343,802	22,282	321,520	42	343,760
Everglades	427	27	400	0	427
Marco Island	16,728	315	16,413	0	16,728
Naples	19,527	-10	19,537	0	19,527
UNINCORPORATED	307,120	21,950	285,170	42	307,078
Columbia County	68,163	632	67,531	4,126	64,037
Fort White	560	-7	567	0	560
Lake City	12,000	-46	12,046	319	11,681
UNINCORPORATED	55,603	685	54,918	3,807	51,796
DeSoto County	34,777	-85	34,862	2,491	32,286
Arcadia	7,610	-27	7,637	0	7,610
UNINCORPORATED	27,167	-58	27,225	2,491	24,676
Dixie County	16,468	46	16,422	1,536	14,932
Cross City	1,733	5	1,728	0	1,733
Horseshoe Beach	159	-10	169	0	159
UNINCORPORATED	14,576	51	14,525	1,536	13,040
Duval County	905,574	41,311	864,263	644	904,930
Atlantic Beach	13,012	357	12,655	0	13,012
Baldwin	1,385	-40	1,425	0	1,385
Jacksonville	861,252	39,468	821,784	644	860,608
Jacksonville Beach	22,805	1,443	21,362	0	22,805
Neptune Beach	7,120	83	7,037	0	7,120

Table 1. Estimates of Population by County and City in Florida: April 1, 2015

(Continued)

County, City, and State	April 1 2015 Estimate	Total Change	April 1 2010 Census	Revenue Sharing Use Only	
				Inmates	Estimates less Inmates April 1, 2015
Escambia County	306,944	9,325	297,619	2,598	304,346
Century	1,578	-120	1,698	0	1,578
Pensacola	53,058	1,135	51,923	46	53,012
UNINCORPORATED	252,308	8,310	243,998	2,552	249,756
Flagler County	101,353	5,657	95,696	0	101,353
Beverly Beach	356	18	338	0	356
Bunnell	2,875	199	2,676	0	2,875
Flagler Beach (part)	4,503	79	4,424	0	4,503
Marineland (part)	4	-12	16	0	4
Palm Coast	79,821	4,641	75,180	0	79,821
UNINCORPORATED	13,794	732	13,062	0	13,794
Franklin County	11,840	291	11,549	1,774	10,066
Apalachicola	2,302	71	2,231	0	2,302
Carrabelle	2,765	-13	2,778	1,368	1,397
UNINCORPORATED	6,773	233	6,540	406	6,367
Gadsden County	48,315	1,926	46,389	3,285	45,030
Chattahoochee	3,135	-517	3,652	958	2,177
Greensboro	624	22	602	0	624
Gretna	1,556	96	1,460	0	1,556
Havana	1,767	13	1,754	0	1,767
Midway	3,378	374	3,004	0	3,378
Quincy	7,853	-119	7,972	378	7,475
UNINCORPORATED	30,002	2,057	27,945	1,949	28,053
Gilchrist County	16,839	-100	16,939	681	16,158
Bell	537	81	456	0	537
Fanning Springs (part)	329	51	278	0	329
Trenton	2,067	68	1,999	0	2,067
UNINCORPORATED	13,906	-300	14,206	681	13,225
Glades County	12,853	-31	12,884	981	11,872
Moore Haven	1,648	-32	1,680	0	1,648
UNINCORPORATED	11,205	1	11,204	981	10,224
Gulf County	16,346	483	15,863	3,221	13,125
Port St. Joe	3,525	80	3,445	0	3,525
Wewahitchka	2,126	145	1,981	0	2,126
UNINCORPORATED	10,695	258	10,437	3,221	7,474
Hamilton County	14,630	-169	14,799	2,489	12,141
Jasper	3,083	-1,463	4,546	1,401	1,682
Jennings	871	-7	878	0	871
White Springs	763	-14	777	0	763
UNINCORPORATED	9,913	1,315	8,598	1,088	8,825

Table 1. Estimates of Population by County and City in Florida: April 1, 2015

(Continued)

County, City, and State	April 1 2015 Estimate	Total Change	April 1 2010 Census	Revenue Sharing Use Only	
				Inmates	Estimates less Inmates April 1, 2015
Hardee County	27,645	-86	27,731	1,867	25,778
Bowling Green	2,894	-36	2,930	0	2,894
Wauchula	5,001	0	5,001	0	5,001
Zolfo Springs	1,803	-24	1,827	0	1,803
UNINCORPORATED	17,947	-26	17,973	1,867	16,080
Hendry County	38,096	-1,044	39,140	0	38,096
Clewiston	7,441	286	7,155	0	7,441
LaBelle	4,792	152	4,640	0	4,792
UNINCORPORATED	25,863	-1,482	27,345	0	25,863
Hernando County	176,819	4,041	172,778	483	176,336
Brooksville	7,780	61	7,719	0	7,780
Weeki Wachee	5	-7	12	0	5
UNINCORPORATED	169,034	3,987	165,047	483	168,551
Highlands County	100,748	1,962	98,786	67	100,681
Avon Park	10,895	2,059	8,836	0	10,895
Lake Placid	2,415	192	2,223	0	2,415
Sebring	10,776	285	10,491	0	10,776
UNINCORPORATED	76,662	-574	77,236	67	76,595
Hillsborough County	1,325,563	96,337	1,229,226	791	1,324,772
Plant City	36,710	1,989	34,721	0	36,710
Tampa	358,279	22,570	335,709	615	357,664
Temple Terrace	25,567	1,026	24,541	0	25,567
UNINCORPORATED	905,007	70,752	834,255	176	904,831
Holmes County	19,902	-25	19,927	1,457	18,445
Bonifay	2,665	-128	2,793	0	2,665
Esto	364	0	364	0	364
Noma	183	-28	211	0	183
Ponce de Leon	557	-41	598	0	557
Westville	299	10	289	0	299
UNINCORPORATED	15,834	162	15,672	1,457	14,377
Indian River County	143,326	5,298	138,028	0	143,326
Fellsmere	5,355	158	5,197	0	5,355
Indian River Shores	3,995	94	3,901	0	3,995
Orchid	411	-4	415	0	411
Sebastian	23,137	1,208	21,929	0	23,137
Vero Beach*	15,608	385	15,223	0	15,608
UNINCORPORATED*	94,820	3,457	91,363	0	94,820

Table 1. Estimates of Population by County and City in Florida: April 1, 2015

(Continued)

County, City, and State	April 1 2015 Estimate	Total Change	April 1 2010 Census	Revenue Sharing Use Only	
				Inmates	Estimates less Inmates April 1, 2015
Jackson County	50,458	712	49,746	7,650	42,808
Alford	491	2	489	0	491
Bascom	128	7	121	0	128
Campbellton	232	2	230	0	232
Cottondale	907	-26	933	0	907
Graceville	2,187	-91	2,278	0	2,187
Grand Ridge	936	44	892	0	936
Greenwood	693	7	686	0	693
Jacob City	228	-22	250	0	228
Malone	2,317	229	2,088	1,665	652
Marianna	7,727	1,625	6,102	1,687	6,040
Sneads	1,909	60	1,849	0	1,909
UNINCORPORATED	32,703	-1,125	33,828	4,298	28,405
Jefferson County	14,519	-242	14,761	1,119	13,400
Monticello	2,458	-48	2,506	0	2,458
UNINCORPORATED	12,061	-194	12,255	1,119	10,942
Lafayette County	8,664	-206	8,870	1,647	7,017
Mayo	1,201	-36	1,237	0	1,201
UNINCORPORATED	7,463	-170	7,633	1,647	5,816
Lake County*	316,569	19,522	297,047	1,105	315,464
Astatula	1,824	14	1,810	0	1,824
Clermont	32,348	3,606	28,742	0	32,348
Eustis	19,432	874	18,558	0	19,432
Fruitland Park	4,214	136	4,078	0	4,214
Groveland	12,077	3,348	8,729	0	12,077
Howey-in-the-Hills	1,106	8	1,098	0	1,106
Lady Lake	14,207	281	13,926	0	14,207
Leesburg	21,547	1,430	20,117	0	21,547
Mascotte	5,401	300	5,101	0	5,401
Minneola	10,470	1,067	9,403	0	10,470
Montverde	1,472	9	1,463	0	1,472
Mount Dora	13,167	797	12,370	0	13,167
Tavares	15,106	1,155	13,951	0	15,106
Umatilla	3,798	342	3,456	0	3,798
UNINCORPORATED*	160,400	6,155	154,245	1,105	159,295
Lee County	665,845	47,091	618,754	283	665,562
Bonita Springs*	46,568	2,711	43,857	4	46,564
Cape Coral	166,508	12,203	154,305	30	166,478
Estero**	30,118	30,118	0	0	30,118
Fort Myers	72,395	10,097	62,298	69	72,326

Table 1. Estimates of Population by County and City in Florida: April 1, 2015

(Continued)

County, City, and State	April 1 2015 Estimate	Total Change	April 1 2010 Census	Revenue Sharing Use Only	
				Inmates	Estimates less Inmates April 1, 2015
Lee County (Continued)					
Fort Myers Beach	6,264	-13	6,277	0	6,264
Sanibel	6,502	33	6,469	0	6,502
UNINCORPORATED*	337,490	-8,058	345,548	180	337,310
Leon County					
Tallahassee	187,996	6,620	181,376	1,258	186,738
UNINCORPORATED	96,447	2,336	94,111	0	96,447
Levy County					
Bronson	1,187	74	1,113	0	1,187
Cedar Key	696	-6	702	0	696
Chiefland	2,153	-92	2,245	0	2,153
Fanning Springs (part)	455	-31	486	0	455
Inglis	1,301	-24	1,325	0	1,301
Otter Creek	120	-14	134	0	120
Williston	2,848	80	2,768	0	2,848
Yankeetown	489	-13	502	0	489
UNINCORPORATED	31,199	-327	31,526	0	31,199
Liberty County					
Bristol	958	-38	996	0	958
UNINCORPORATED	7,740	371	7,369	1,771	5,969
Madison County					
Greenville	766	-77	843	0	766
Lee	332	-20	352	0	332
Madison*	3,061	12	3,049	0	3,061
UNINCORPORATED*	15,041	61	14,980	1,585	13,456
Manatee County					
Anna Maria	1,519	16	1,503	0	1,519
Bradenton	52,534	2,988	49,546	23	52,511
Bradenton Beach	1,178	7	1,171	0	1,178
Holmes Beach	3,851	15	3,836	0	3,851
Longboat Key (part)	2,378	-20	2,398	0	2,378
Palmetto	13,082	476	12,606	48	13,034
UNINCORPORATED	274,792	23,019	251,773	117	274,675
Marion County*					
Bellevue	4,746	254	4,492	5	4,741
Dunnellon	1,771	38	1,733	0	1,771
McIntosh	450	-2	452	0	450
Ocala	58,355	2,040	56,315	138	58,217
Reddick	501	-5	506	0	501
UNINCORPORATED*	275,382	7,577	267,805	5,589	269,793

Table 1. Estimates of Population by County and City in Florida: April 1, 2015

(Continued)

County, City, and State	April 1 2015 Estimate	Total Change	April 1 2010 Census	Revenue Sharing Use Only	
				Inmates	Estimates less Inmates April 1, 2015
Martin County	150,062	3,744	146,318	1,939	148,123
Jupiter Island	810	-7	817	0	810
Ocean Breeze	95	-260	355	0	95
Sewall's Point	2,000	4	1,996	0	2,000
Stuart	16,110	517	15,593	23	16,087
UNINCORPORATED	131,047	3,490	127,557	1,916	129,131
Miami-Dade County*	2,653,934	157,477	2,496,457	9,284	2,644,650
Aventura	37,473	1,711	35,762	0	37,473
Bal Harbour	2,778	265	2,513	0	2,778
Bay Harbor Islands	5,552	-76	5,628	0	5,552
Biscayne Park	3,147	92	3,055	0	3,147
Coral Gables*	49,397	2,621	46,776	0	49,397
Cutler Bay	44,109	3,823	40,286	0	44,109
Doral*	55,660	9,951	45,709	0	55,660
El Portal	2,334	9	2,325	0	2,334
Florida City	12,577	1,332	11,245	0	12,577
Golden Beach	928	9	919	0	928
Hialeah*	233,053	8,386	224,667	0	233,053
Hialeah Gardens	23,004	1,260	21,744	0	23,004
Homestead*	69,533	9,024	60,509	18	69,515
Indian Creek	86	0	86	0	86
Islandia***	0	-18	18	0	0
Key Biscayne	12,684	340	12,344	0	12,684
Medley	836	-2	838	0	836
Miami*	439,509	40,001	399,508	2,652	436,857
Miami Beach*	91,714	3,936	87,778	0	91,714
Miami Gardens*	109,951	2,785	107,166	0	109,951
Miami Lakes	30,209	848	29,361	11	30,198
Miami Shores	10,806	313	10,493	0	10,806
Miami Springs	14,089	280	13,809	0	14,089
North Bay Village	8,178	1,041	7,137	0	8,178
North Miami*	62,380	3,468	58,912	0	62,380
North Miami Beach	43,533	2,010	41,523	0	43,533
Opa-locka	17,528	2,309	15,219	0	17,528
Palmetto Bay*	23,843	435	23,408	0	23,843
Pinecrest	18,408	185	18,223	0	18,408
South Miami	13,656	1,999	11,657	0	13,656
Sunny Isles Beach	21,592	760	20,832	0	21,592
Surfside	5,703	-41	5,744	0	5,703
Sweetwater	20,793	7,294	13,499	0	20,793
Virginia Gardens	2,416	41	2,375	0	2,416
West Miami	6,018	53	5,965	0	6,018
UNINCORPORATED*	1,160,457	51,033	1,109,424	6,603	1,153,854

Table 1. Estimates of Population by County and City in Florida: April 1, 2015

(Continued)

County, City, and State	April 1 2015 Estimate	Total Change	April 1 2010 Census	Revenue Sharing Use Only	
				Inmates	Estimates less Inmates April 1, 2015
Monroe County	74,206	1,116	73,090	61	74,145
Islamorada, Village of Islands	6,199	80	6,119	0	6,199
Key Colony Beach	796	-1	797	0	796
Key West	24,663	14	24,649	1	24,662
Layton	183	-1	184	0	183
Marathon	8,439	142	8,297	0	8,439
UNINCORPORATED	33,926	882	33,044	60	33,866
Nassau County	76,536	3,222	73,314	72	76,464
Callahan	1,185	62	1,123	0	1,185
Fernandina Beach	11,970	483	11,487	24	11,946
Hilliard	3,032	-54	3,086	0	3,032
UNINCORPORATED	60,349	2,731	57,618	48	60,301
Okaloosa County	191,898	11,076	180,822	1,348	190,550
Cinco Bayou	397	14	383	0	397
Crestview	23,460	2,482	20,978	0	23,460
Destin	12,730	425	12,305	0	12,730
Fort Walton Beach	20,869	1,362	19,507	0	20,869
Laurel Hill	534	-3	537	0	534
Mary Esther	3,859	8	3,851	0	3,859
Niceville	13,774	1,025	12,749	0	13,774
Shalimar	741	24	717	0	741
Valparaiso	5,254	218	5,036	0	5,254
UNINCORPORATED	110,280	5,521	104,759	1,348	108,932
Okeechobee County	40,052	56	39,996	2,013	38,039
Okeechobee	5,534	-87	5,621	0	5,534
UNINCORPORATED	34,518	143	34,375	2,013	32,505
Orange County	1,252,396	106,440	1,145,956	3,206	1,249,190
Apopka	46,571	5,029	41,542	0	46,571
Bay Lake	15	-32	47	0	15
Belle Isle	6,464	476	5,988	0	6,464
Eatonville	2,246	87	2,159	32	2,214
Edgewood	2,635	132	2,503	0	2,635
Lake Buena Vista	22	12	10	0	22
Maitland	17,007	1,256	15,751	0	17,007
Oakland	2,624	86	2,538	0	2,624
Ocoee	40,171	4,592	35,579	0	40,171
Orlando	262,949	24,649	238,300	577	262,372
Windermere	2,869	407	2,462	0	2,869
Winter Garden	39,871	5,303	34,568	0	39,871
Winter Park	28,967	1,115	27,852	0	28,967
UNINCORPORATED	799,985	63,328	736,657	2,597	797,388

Table 1. Estimates of Population by County and City in Florida: April 1, 2015

(Continued)

County, City, and State	April 1 2015 Estimate	Total Change	April 1 2010 Census	Revenue Sharing Use Only	
				Inmates	Estimates less Inmates April 1, 2015
Osceola County	308,327	39,642	268,685	313	308,014
Kissimmee	66,592	6,910	59,682	160	66,432
St. Cloud	41,316	6,133	35,183	0	41,316
UNINCORPORATED	200,419	26,599	173,820	153	200,266
Palm Beach County	1,378,417	58,283	1,320,134	2,937	1,375,480
Atlantis	2,001	-4	2,005	0	2,001
Belle Glade	17,448	-19	17,467	0	17,448
Boca Raton	87,766	3,374	84,392	0	87,766
Boynton Beach	72,784	4,567	68,217	0	72,784
Briny Breezes	415	-186	601	0	415
Cloud Lake	133	-2	135	0	133
Delray Beach	63,175	2,653	60,522	0	63,175
Glen Ridge	215	-4	219	0	215
Golf	252	0	252	0	252
Greenacres	38,943	1,370	37,573	0	38,943
Gulf Stream	998	212	786	0	998
Haverhill	1,977	104	1,873	0	1,977
Highland Beach	3,600	61	3,539	0	3,600
Hypoluxo	2,691	103	2,588	0	2,691
Juno Beach	3,240	64	3,176	0	3,240
Jupiter	59,108	3,952	55,156	0	59,108
Jupiter Inlet Colony	396	-4	400	0	396
Lake Clarke Shores	3,375	-1	3,376	0	3,375
Lake Park	8,598	443	8,155	0	8,598
Lake Worth	37,674	2,764	34,910	0	37,674
Lantana	10,705	282	10,423	22	10,683
Loxahatchee Groves	3,203	23	3,180	0	3,203
Manalapan	410	4	406	0	410
Mangonia Park	1,959	71	1,888	0	1,959
North Palm Beach	12,206	191	12,015	0	12,206
Ocean Ridge	1,794	8	1,786	0	1,794
Pahokee	5,839	190	5,649	351	5,488
Palm Beach*	8,041	-120	8,161	0	8,041
Palm Beach Gardens*	50,521	2,081	48,440	0	50,521
Palm Beach Shores	1,143	1	1,142	0	1,143
Palm Springs	22,282	3,354	18,928	0	22,282
Riviera Beach	33,953	1,465	32,488	0	33,953
Royal Palm Beach	36,731	2,591	34,140	0	36,731
South Bay	5,151	275	4,876	1,942	3,209
South Palm Beach*	1,366	8	1,358	0	1,366
Tequesta	5,665	36	5,629	0	5,665
Wellington	59,860	3,352	56,508	0	59,860
West Palm Beach*	106,525	6,182	100,343	308	106,217
UNINCORPORATED*	606,274	18,842	587,432	314	605,960

Table 1. Estimates of Population by County and City in Florida: April 1, 2015

(Continued)

County, City, and State	April 1 2015 Estimate	Total Change	April 1 2010 Census	Revenue Sharing Use Only	
				Inmates	Estimates less Inmates April 1, 2015
Pasco County	487,588	22,891	464,697	807	486,781
Dade City	6,816	379	6,437	0	6,816
New Port Richey	15,351	440	14,911	0	15,351
Port Richey	2,638	-33	2,671	0	2,638
St. Leo	1,350	10	1,340	0	1,350
San Antonio	1,232	94	1,138	0	1,232
Zephyrhills	15,010	1,722	13,288	0	15,010
UNINCORPORATED	445,191	20,279	424,912	807	444,384
Pinellas County	944,971	28,429	916,542	1,025	943,946
Belleair	3,889	20	3,869	0	3,889
Belleair Beach	1,563	3	1,560	0	1,563
Belleair Bluffs	2,052	21	2,031	0	2,052
Belleair Shore	107	-2	109	0	107
Clearwater	110,679	2,994	107,685	0	110,679
Dunedin	35,783	462	35,321	6	35,777
Gulfport	12,222	193	12,029	0	12,222
Indian Rocks Beach	4,203	90	4,113	0	4,203
Indian Shores	1,424	4	1,420	0	1,424
Kenneth City	5,040	60	4,980	0	5,040
Largo	80,747	3,099	77,648	0	80,747
Madeira Beach	4,341	78	4,263	0	4,341
North Redington Beach	1,418	1	1,417	0	1,418
Oldsmar	13,993	402	13,591	0	13,993
Pinellas Park	51,790	2,711	49,079	0	51,790
Redington Beach	1,438	11	1,427	0	1,438
Redington Shores	2,152	31	2,121	0	2,152
Safety Harbor	17,103	219	16,884	6	17,097
St. Pete Beach	9,412	66	9,346	0	9,412
St. Petersburg	256,681	11,912	244,769	416	256,265
Seminole	18,231	998	17,233	0	18,231
South Pasadena	5,081	117	4,964	0	5,081
Tarpon Springs	24,421	937	23,484	0	24,421
Treasure Island	6,790	85	6,705	0	6,790
UNINCORPORATED	274,411	3,917	270,494	597	273,814
Polk County	633,052	30,957	602,095	3,033	630,019
Auburndale	14,832	1,325	13,507	0	14,832
Bartow	18,205	907	17,298	176	18,029
Davenport	3,786	898	2,888	0	3,786
Dundee	3,974	257	3,717	0	3,974
Eagle Lake	2,387	132	2,255	0	2,387
Fort Meade	5,741	115	5,626	0	5,741
Frostproof	3,004	12	2,992	0	3,004
Haines City*	22,660	2,100	20,560	0	22,660

Table 1. Estimates of Population by County and City in Florida: April 1, 2015

(Continued)

County, City, and State	April 1 2015 Estimate	Total Change	April 1 2010 Census	Revenue Sharing Use Only	
				Inmates	Estimates less Inmates April 1, 2015
Polk County (Continued)					
Highland Park	234	4	230	0	234
Hillcrest Heights	254	0	254	0	254
Lake Alfred	5,322	307	5,015	0	5,322
Lake Hamilton	1,271	40	1,231	0	1,271
Lakeland	101,517	4,095	97,422	0	101,517
Lake Wales	15,011	786	14,225	0	15,011
Mulberry	3,775	-42	3,817	0	3,775
Polk City	1,623	61	1,562	0	1,623
Winter Haven	38,085	4,211	33,874	0	38,085
UNINCORPORATED*	391,371	15,749	375,622	2,857	388,514
Putnam County					
Crescent City	72,756	-1,608	74,364	485	72,271
Interlachen	1,540	-37	1,577	0	1,540
Palatka	1,337	-66	1,403	0	1,337
Pomona Park	10,418	-140	10,558	0	10,418
Welaka	873	-39	912	0	873
UNINCORPORATED	57,876	-1,337	59,213	485	57,391
St. Johns County					
Hastings	213,566	23,527	190,039	180	213,386
Marineland (part)	604	24	580	0	604
St. Augustine	2	2	0	0	2
St. Augustine Beach	13,590	615	12,975	0	13,590
UNINCORPORATED	6,480	304	6,176	0	6,480
UNINCORPORATED	192,890	22,582	170,308	180	192,710
St. Lucie County					
Fort Pierce	287,749	9,960	277,789	125	287,624
Port St. Lucie	42,119	529	41,590	32	42,087
St. Lucie Village	174,132	9,529	164,603	6	174,126
UNINCORPORATED	597	7	590	0	597
UNINCORPORATED	70,901	-105	71,006	87	70,814
Santa Rosa County					
Gulf Breeze	162,925	11,553	151,372	5,456	157,469
Jay	5,832	69	5,763	0	5,832
Milton	563	30	533	0	563
UNINCORPORATED	9,425	599	8,826	80	9,345
UNINCORPORATED	147,105	10,855	136,250	5,376	141,729
Sarasota County					
Longboat Key (part)	392,090	12,642	379,448	6	392,084
North Port	4,467	-23	4,490	0	4,467
Sarasota	62,235	4,878	57,357	0	62,235
Venice	52,905	988	51,917	6	52,899
UNINCORPORATED	21,418	670	20,748	0	21,418
UNINCORPORATED	251,065	6,129	244,936	0	251,065

Table 1. Estimates of Population by County and City in Florida: April 1, 2015

(Continued)

County, City, and State	April 1 2015 Estimate	Total Change	April 1 2010 Census	Revenue Sharing Use Only	
				Inmates	Estimates less Inmates April 1, 2015
Seminole County	442,903	20,185	422,718	88	442,815
Altamonte Springs	43,325	1,829	41,496	0	43,325
Casselberry	27,614	1,373	26,241	6	27,608
Lake Mary	15,905	2,083	13,822	0	15,905
Longwood	13,974	317	13,657	0	13,974
Oviedo	36,819	3,477	33,342	0	36,819
Sanford	56,900	3,330	53,570	18	56,882
Winter Springs	34,901	1,619	33,282	0	34,901
UNINCORPORATED	213,465	6,157	207,308	64	213,401
Sumter County	115,657	22,237	93,420	8,528	107,129
Bushnell	2,459	41	2,418	0	2,459
Center Hill	981	-7	988	0	981
Coleman	694	-9	703	0	694
Webster	768	-17	785	0	768
Wildwood	7,473	764	6,709	0	7,473
UNINCORPORATED	103,282	21,465	81,817	8,528	94,754
Suwannee County	44,452	2,901	41,551	2,920	41,532
Branford	687	-25	712	0	687
Live Oak	6,853	3	6,850	0	6,853
UNINCORPORATED	36,912	2,923	33,989	2,920	33,992
Taylor County	22,824	254	22,570	3,058	19,766
Perry	7,016	-1	7,017	0	7,016
UNINCORPORATED	15,808	255	15,553	3,058	12,750
Union County	15,918	383	15,535	4,903	11,015
Lake Butler	1,831	-66	1,897	0	1,831
Raiford	252	-3	255	0	252
Worthington Springs*	386	-21	407	0	386
UNINCORPORATED*	13,449	473	12,976	4,903	8,546
Volusia County	510,494	15,901	494,593	1,932	508,562
Daytona Beach	63,534	2,529	61,005	29	63,505
Daytona Beach Shores	4,263	16	4,247	0	4,263
DeBary	20,002	682	19,320	0	20,002
DeLand	30,493	3,462	27,031	0	30,493
Deltona	87,497	2,315	85,182	0	87,497
Edgewater	20,958	208	20,750	0	20,958
Flagler Beach (part)	60	0	60	0	60
Holly Hill	11,712	53	11,659	0	11,712
Lake Helen	2,651	27	2,624	0	2,651
New Smyrna Beach	24,285	1,821	22,464	0	24,285

Table 1. Estimates of Population by County and City in Florida: April 1, 2015

(Continued)

County, City, and State	April 1 2015 Estimate	Total Change	April 1 2010 Census	Revenue Sharing Use Only	
				Inmates	Estimates less Inmates April 1, 2015
Volusia County (Continued)					
Oak Hill	1,869	77	1,792	0	1,869
Orange City	11,569	970	10,599	0	11,569
Ormond Beach	40,013	1,876	38,137	6	40,007
Pierson	1,691	-45	1,736	0	1,691
Ponce Inlet	3,047	15	3,032	0	3,047
Port Orange	58,656	2,608	56,048	0	58,656
South Daytona	12,538	286	12,252	0	12,538
UNINCORPORATED	115,656	-999	116,655	1,897	113,759
Wakulla County					
St. Marks	31,283	507	30,776	3,300	27,983
Sopchoppy	281	-12	293	0	281
UNINCORPORATED	459	2	457	0	459
UNINCORPORATED	30,543	517	30,026	3,300	27,243
Walton County					
DeFuniak Springs	60,687	5,644	55,043	1,459	59,228
Freeport	5,429	252	5,177	36	5,393
Paxton	2,667	880	1,787	0	2,667
UNINCORPORATED	622	-22	644	0	622
UNINCORPORATED	51,969	4,534	47,435	1,423	50,546
Washington County					
Caryville	24,975	79	24,896	2,534	22,441
Chipley	278	-133	411	0	278
Ebro	3,512	-93	3,605	0	3,512
Vernon	220	-50	270	0	220
Wausau	689	2	687	0	689
UNINCORPORATED	388	5	383	0	388
UNINCORPORATED	19,888	348	19,540	2,534	17,354
Florida*					
Incorporated*	19,815,183	1,013,851	18,801,332	123,645	19,691,538
Unincorporated*	10,018,127	564,946	9,453,181	19,620	9,998,507
Unincorporated*	9,797,056	448,905	9,348,151	104,025	9,693,031

* Includes US Census Bureau corrections as of February 11, 2014.

** The Village of Estero was incorporated on December 31, 2014.

*** The City of Islandia was disincorporated as of March 6, 2012.

Table 2. Components of Population Change for Counties in Florida, 2010 to 2015

State and County	Total Change 2010–2015	Births	Deaths	Components of Change		Percent of Change Due to—	
				Natural Increase	Net Migration	Natural Increase	Net Migration
FLORIDA*	1,013,851	1,075,809	886,266	189,543	824,308	18.7	81.3
Alachua	7,557	14,445	8,783	5,662	1,895	74.9	25.1
Baker	-98	1,746	1,129	617	-715	0.0	100.0
Bay	4,458	11,231	8,528	2,703	1,755	60.6	39.4
Bradford	-1,210	1,577	1,397	180	-1,390	0.0	100.0
Brevard	18,338	25,458	31,611	-6,153	24,491	0.0	100.0
Broward	79,301	107,345	71,583	35,762	43,539	45.1	54.9
Calhoun	-76	723	776	-53	-23	69.7	30.3
Charlotte	7,163	5,063	11,526	-6,463	13,626	0.0	100.0
Citrus	265	5,205	11,829	-6,624	6,889	0.0	100.0
Clay	10,412	10,479	7,510	2,969	7,443	28.5	71.5
Collier	22,282	16,127	14,635	1,492	20,790	6.7	93.3
Columbia	632	4,019	3,753	266	366	42.1	57.9
DeSoto	-85	1,935	1,458	477	-562	0.0	100.0
Dixie	46	795	1,023	-228	274	0.0	100.0
Duval	41,311	62,546	36,651	25,895	15,416	62.7	37.3
Escambia	9,325	19,372	15,368	4,004	5,321	42.9	57.1
Flagler	5,657	4,080	5,645	-1,565	7,222	0.0	100.0
Franklin	291	533	640	-107	398	0.0	100.0
Gadsden	1,926	2,889	2,293	596	1,330	30.9	69.1
Gilchrist	-100	939	904	35	-135	0.0	100.0
Glades	-31	342	513	-171	140	100.0	0.0
Gulf	483	622	855	-233	716	0.0	100.0
Hamilton	-169	777	680	97	-266	0.0	100.0
Hardee	-86	2,018	1,007	1,011	-1,097	0.0	100.0
Hendry	-1,044	2,953	1,346	1,607	-2,651	0.0	100.0
Hernando	4,041	7,372	12,311	-4,939	8,980	0.0	100.0
Highlands	1,962	4,557	7,161	-2,604	4,566	0.0	100.0
Hillsborough	96,337	82,733	47,268	35,465	60,872	36.8	63.2
Holmes	-25	969	1,243	-274	249	100.0	0.0
Indian River	5,298	6,328	9,057	-2,729	8,027	0.0	100.0
Jackson	712	2,471	2,771	-300	1,012	0.0	100.0
Jefferson	-242	654	773	-119	-123	49.2	50.8
Lafayette	-206	404	351	53	-259	0.0	100.0

Table 2. Components of Population Change for Counties in Florida, 2010 to 2015

(Continued)

State and County	Total Change 2010–2015	Births	Deaths	Components of Change		Percent of Change Due to—	
				Natural Increase	Net Migration	Natural Increase	Net Migration
Lake*	19,522	15,363	17,391	-2,028	21,550	0.0	100.0
Lee	47,091	31,740	30,660	1,080	46,011	2.3	97.7
Leon	8,956	15,244	8,606	6,638	2,318	74.1	25.9
Levy	-353	1,989	2,563	-574	221	100.0	0.0
Liberty	333	409	332	77	256	23.1	76.9
Madison	-24	1,049	1,106	-57	33	100.0	0.0
Manatee	26,501	17,062	17,366	-304	26,805	0.0	100.0
Marion*	9,902	16,775	22,503	-5,728	15,630	0.0	100.0
Martin	3,744	5,969	8,787	-2,818	6,562	0.0	100.0
Miami-Dade*	157,477	156,311	91,951	64,360	93,117	40.9	59.1
Monroe	1,116	3,615	3,284	331	785	29.7	70.3
Nassau	3,222	3,774	3,513	261	2,961	8.1	91.9
Okaloosa	11,076	13,364	7,824	5,540	5,536	50.0	50.0
Okeechobee	56	2,680	2,046	634	-578	100.0	0.0
Orange	106,440	78,361	34,881	43,480	62,960	40.8	59.2
Osceola	39,642	19,414	9,056	10,358	29,284	26.1	73.9
Palm Beach	58,283	70,190	66,680	3,510	54,773	6.0	94.0
Pasco	22,891	23,853	27,647	-3,794	26,685	0.0	100.0
Pinellas	28,429	42,301	56,386	-14,085	42,514	0.0	100.0
Polk	30,957	36,733	30,056	6,677	24,280	21.6	78.4
Putnam	-1,608	4,231	4,738	-507	-1,101	31.5	68.5
St. Johns	23,527	9,659	7,958	1,701	21,826	7.2	92.8
St. Lucie	9,960	14,981	14,075	906	9,054	9.1	90.9
Santa Rosa	11,553	9,049	6,203	2,846	8,707	24.6	75.4
Sarasota	12,642	14,431	25,240	-10,809	23,451	0.0	100.0
Seminole	20,185	22,161	14,858	7,303	12,882	36.2	63.8
Sumter	22,237	2,294	6,628	-4,334	26,571	0.0	100.0
Suwannee	2,901	2,362	2,630	-268	3,169	0.0	100.0
Taylor	254	1,198	1,159	39	215	15.4	84.6
Union	383	861	1,003	-142	525	0.0	100.0
Volusia	15,901	23,474	31,487	-8,013	23,914	0.0	100.0
Wakulla	507	1,605	1,210	395	112	77.9	22.1
Walton	5,644	3,400	2,706	694	4,950	12.3	87.7
Washington	79	1,200	1,355	-155	234	0.0	100.0

Note: * Includes US Census Bureau corrections as of February 11, 2014.

Table 3. Population and Population Change for Counties in Florida, 1990 to 2015

State and County	Population				Percent change		
	2015	2010	2000	1990	2010 to 2015	2000 to 2010	1990 to 2000
FLORIDA*	19,815,183	18,801,332	15,982,824	12,938,071	5.4	17.6	23.5
Alachua	254,893	247,336	217,955	181,596	3.1	13.5	20.0
Baker	27,017	27,115	22,259	18,486	-0.4	21.8	20.4
Bay	173,310	168,852	148,217	126,994	2.6	13.9	16.7
Bradford	27,310	28,520	26,088	22,515	-4.2	9.3	15.9
Brevard	561,714	543,376	476,230	398,978	3.4	14.1	19.4
Broward	1,827,367	1,748,066	1,623,018	1,255,531	4.5	7.7	29.3
Calhoun	14,549	14,625	13,017	11,011	-0.5	12.4	18.2
Charlotte	167,141	159,978	141,627	110,975	4.5	13.0	27.6
Citrus	141,501	141,236	118,085	93,513	0.2	19.6	26.3
Clay	201,277	190,865	140,814	105,986	5.5	35.5	32.9
Collier	343,802	321,520	251,377	152,099	6.9	27.9	65.3
Columbia	68,163	67,531	56,513	42,613	0.9	19.5	32.6
DeSoto	34,777	34,862	32,209	23,865	-0.2	8.2	35.0
Dixie	16,468	16,422	13,827	10,585	0.3	18.8	30.6
Duval	905,574	864,263	778,879	672,971	4.8	11.0	15.7
Escambia	306,944	297,619	294,410	262,798	3.1	1.1	12.0
Flagler	101,353	95,696	49,832	28,701	5.9	92.0	73.6
Franklin	11,840	11,549	9,829	8,967	2.5	17.5	9.6
Gadsden	48,315	46,389	45,087	41,116	4.2	2.9	9.7
Gilchrist	16,839	16,939	14,437	9,667	-0.6	17.3	49.3
Glades	12,853	12,884	10,576	7,591	-0.2	21.8	39.3
Gulf	16,346	15,863	14,560	11,504	3.0	8.9	26.6
Hamilton	14,630	14,799	13,327	10,930	-1.1	11.0	21.9
Hardee	27,645	27,731	26,938	19,499	-0.3	2.9	38.2
Hendry	38,096	39,140	36,210	25,773	-2.7	8.1	40.5
Hernando	176,819	172,778	130,802	101,115	2.3	32.1	29.4
Highlands	100,748	98,786	87,366	68,432	2.0	13.1	27.7
Hillsborough	1,325,563	1,229,226	998,948	834,054	7.8	23.1	19.8
Holmes	19,902	19,927	18,564	15,778	-0.1	7.3	17.7
Indian River	143,326	138,028	112,947	90,208	3.8	22.2	25.2
Jackson	50,458	49,746	46,755	41,375	1.4	6.4	13.0
Jefferson	14,519	14,761	12,902	11,296	-1.6	14.4	14.2
Lafayette	8,664	8,870	7,022	5,578	-2.3	26.3	25.9

Table 3. Population and Population Change for Counties in Florida, 1990 to 2015

(Continued)

State and County	Population				Percent change		
	2015	2010	2000	1990	2010 to 2015	2000 to 2010	1990 to 2000
Lake*	316,569	297,047	210,527	152,104	6.6	41.1	38.4
Lee	665,845	618,754	440,888	335,113	7.6	40.3	31.6
Leon	284,443	275,487	239,452	192,493	3.3	15.0	24.4
Levy	40,448	40,801	34,450	25,912	-0.9	18.4	32.9
Liberty	8,698	8,365	7,021	5,569	4.0	19.1	26.1
Madison	19,200	19,224	18,733	16,569	-0.1	2.6	13.1
Manatee	349,334	322,833	264,002	211,707	8.2	22.3	24.7
Marion*	341,205	331,303	258,916	194,835	3.0	28.0	32.9
Martin	150,062	146,318	126,731	100,900	2.6	15.5	25.6
Miami-Dade*	2,653,934	2,496,457	2,253,779	1,937,194	6.3	10.8	16.3
Monroe	74,206	73,090	79,589	78,024	1.5	-8.2	2.0
Nassau	76,536	73,314	57,663	43,941	4.4	27.1	31.2
Okaloosa	191,898	180,822	170,498	143,777	6.1	6.1	18.6
Okeechobee	40,052	39,996	35,910	29,627	0.1	11.4	21.2
Orange	1,252,396	1,145,956	896,344	677,491	9.3	27.8	32.3
Osceola	308,327	268,685	172,493	107,728	14.8	55.8	60.1
Palm Beach	1,378,417	1,320,134	1,131,191	863,503	4.4	16.7	31.0
Pasco	487,588	464,697	344,768	281,131	4.9	34.8	22.6
Pinellas	944,971	916,542	921,495	851,659	3.1	-0.5	8.2
Polk	633,052	602,095	483,924	405,382	5.1	24.4	19.4
Putnam	72,756	74,364	70,423	65,070	-2.2	5.6	8.2
St. Johns	213,566	190,039	123,135	83,829	12.4	54.3	46.9
St. Lucie	287,749	277,789	192,695	150,171	3.6	44.2	28.3
Santa Rosa	162,925	151,372	117,743	81,608	7.6	28.6	44.3
Sarasota	392,090	379,448	325,961	277,776	3.3	16.4	17.3
Seminole	442,903	422,718	365,199	287,521	4.8	15.8	27.0
Sumter	115,657	93,420	53,345	31,577	23.8	75.1	68.9
Suwannee	44,452	41,551	34,844	26,780	7.0	19.2	30.1
Taylor	22,824	22,570	19,256	17,111	1.1	17.2	12.5
Union	15,918	15,535	13,442	10,252	2.5	15.6	31.1
Volusia	510,494	494,593	443,343	370,737	3.2	11.6	19.6
Wakulla	31,283	30,776	22,863	14,202	1.6	34.6	61.0
Walton	60,687	55,043	40,601	27,759	10.3	35.6	46.3
Washington	24,975	24,896	20,973	16,919	0.3	18.7	24.0

Note: * Includes US Census Bureau corrections as of February 11, 2014.

**Table 4. Population and Population Change For Metropolitan Statistical Areas
In Florida, 1990 to 2015**

Metropolitan Statistical Area* and County	Population				Percent Change		
	2015 Estimate	2010 Census	2000 Census	1990 Census	2010 to 2015	2000 to 2010	1990 to 2000
All MSAs*	19,106,299	18,094,334	15,337,308	12,400,158	5.6	18.0	23.7
Cape Coral-Fort Myers	665,845	618,754	440,888	335,113	7.6	40.3	31.6
Lee	665,845	618,754	440,888	335,113	7.6	40.3	31.6
Crestview-Fort Walton Beach-Destin	252,585	235,865	211,099	171,536	7.1	11.7	23.1
Okaloosa	191,898	180,822	170,498	143,777	6.1	6.1	18.6
Walton	60,687	55,043	40,601	27,759	10.3	35.6	46.3
Deltona-Daytona Beach-Ormond Beach	611,847	590,289	493,175	399,438	3.7	19.7	23.5
Flagler	101,353	95,696	49,832	28,701	5.9	92.0	73.6
Volusia	510,494	494,593	443,343	370,737	3.2	11.6	19.6
Gainesville	271,732	264,275	232,392	191,263	2.8	13.7	21.5
Alachua	254,893	247,336	217,955	181,596	3.1	13.5	20.0
Gilchrist	16,839	16,939	14,437	9,667	-0.6	17.3	49.3
Homosassa Springs	141,501	141,236	118,085	93,513	0.2	19.6	26.3
Citrus	141,501	141,236	118,085	93,513	0.2	19.6	26.3
Jacksonville	1,423,970	1,345,596	1,122,750	925,213	5.8	19.8	21.4
Baker	27,017	27,115	22,259	18,486	-0.4	21.8	20.4
Clay	201,277	190,865	140,814	105,986	5.5	35.5	32.9
Duval	905,574	864,263	778,879	672,971	4.8	11.0	15.7
Nassau	76,536	73,314	57,663	43,941	4.4	27.1	31.2
St. Johns	213,566	190,039	123,135	83,829	12.4	54.3	46.9
Lakeland-Winter Haven	633,052	602,095	483,924	405,382	5.1	24.4	19.4
Polk	633,052	602,095	483,924	405,382	5.1	24.4	19.4
Miami-Fort Lauderdale-West Palm Beach	5,859,718	5,564,657	5,007,988	4,056,228	5.3	11.1	23.5
Broward	1,827,367	1,748,066	1,623,018	1,255,531	4.5	7.7	29.3
Miami-Dade**	2,653,934	2,496,457	2,253,779	1,937,194	6.3	10.8	16.3
Palm Beach	1,378,417	1,320,134	1,131,191	863,503	4.4	16.7	31.0
Naples-Immokalee-Marco Island	343,802	321,520	251,377	152,099	6.9	27.9	65.3
Collier	343,802	321,520	251,377	152,099	6.9	27.9	65.3
North Port-Sarasota-Bradenton	741,424	702,281	589,963	489,483	5.6	19.0	20.5
Manatee	349,334	322,833	264,002	211,707	8.2	22.3	24.7
Sarasota	392,090	379,448	325,961	277,776	3.3	16.4	17.3
Ocala	341,205	331,303	258,916	194,835	3.0	28.0	32.9
Marion**	341,205	331,303	258,916	194,835	3.0	28.0	32.9

**Table 4. Population and Population Change For Metropolitan Statistical Areas
In Florida, 1990 to 2015**

(Continued)

Metropolitan Statistical Area* and County	Population				Percent Change		
	2015 Estimate	2010 Census	2000 Census	1990 Census	2010 to 2015	2000 to 2010	1990 to 2000
Orlando-Kissimmee- Sanford	2,320,195	2,134,406	1,644,563	1,224,844	8.7	29.8	34.3
Lake**	316,569	297,047	210,527	152,104	6.6	41.1	38.4
Orange	1,252,396	1,145,956	896,344	677,491	9.3	27.8	32.3
Osceola	308,327	268,685	172,493	107,728	14.8	55.8	60.1
Seminole	442,903	422,718	365,199	287,521	4.8	15.8	27.0
Palm Bay-Melbourne- Titusville	561,714	543,376	476,230	398,978	3.4	14.1	19.4
Brevard	561,714	543,376	476,230	398,978	3.4	14.1	19.4
Panama City	189,656	184,715	162,777	138,498	2.7	13.5	17.5
Bay	173,310	168,852	148,217	126,994	2.6	13.9	16.7
Gulf	16,346	15,863	14,560	11,504	3.0	8.9	26.6
Pensacola-Ferry Pass-Brent	469,869	448,991	412,153	344,406	4.6	8.9	19.7
Escambia	306,944	297,619	294,410	262,798	3.1	1.1	12.0
Santa Rosa	162,925	151,372	117,743	81,608	7.6	28.6	44.3
Port St. Lucie	437,811	424,107	319,426	251,071	3.2	32.8	27.2
Martin	150,062	146,318	126,731	100,900	2.6	15.5	25.6
St. Lucie	287,749	277,789	192,695	150,171	3.6	44.2	28.3
Punta Gorda	167,141	159,978	141,627	110,975	4.5	13.0	27.6
Charlotte	167,141	159,978	141,627	110,975	4.5	13.0	27.6
Sebastian-Vero Beach	143,326	138,028	112,947	90,208	3.8	22.2	25.2
Indian River	143,326	138,028	112,947	90,208	3.8	22.2	25.2
Sebring	100,748	98,786	87,366	68,432	2.0	13.1	27.7
Highlands	100,748	98,786	87,366	68,432	2.0	13.1	27.7
Tallahassee	378,560	367,413	320,304	259,107	3.0	14.7	23.6
Gadsden	48,315	46,389	45,087	41,116	4.2	2.9	9.7
Jefferson	14,519	14,761	12,902	11,296	-1.6	14.4	14.2
Leon	284,443	275,487	239,452	192,493	3.3	15.0	24.4
Wakulla	31,283	30,776	22,863	14,202	1.6	34.6	61.0
Tampa-St. Petersburg- Clearwater	2,934,941	2,783,243	2,396,013	2,067,959	5.5	16.2	15.9
Hernando	176,819	172,778	130,802	101,115	2.3	32.1	29.4
Hillsborough	1,325,563	1,229,226	998,948	834,054	7.8	23.1	19.8
Pasco	487,588	464,697	344,768	281,131	4.9	34.8	22.6
Pinellas	944,971	916,542	921,495	851,659	3.1	-0.5	8.2
The Villages	115,657	93,420	53,345	31,577	23.8	75.1	68.9
Sumter	115,657	93,420	53,345	31,577	23.8	75.1	68.9

* Based on the February 28, 2013 US Office of Management and Budget MSA definitions, (OMB Bulletin No. 13-01).

** Includes US Census Bureau corrections as of February 11, 2014.

**Table 5. Population Change by Decade for Regional Planning Councils in Florida,
1990 to 2015**

State, Regional Planning Council*, and County	Population				Percent Change		
	2015	2010	2000	1990	2010 to 2015	2000 to 2010	1990 to 2000
FLORIDA**	19,815,183	18,801,332	15,982,824	12,938,071	5.4	17.6	23.5
Apalachee	480,451	467,561	411,486	337,533	2.8	13.6	21.9
Calhoun	14,549	14,625	13,017	11,011	-0.5	12.4	18.2
Franklin	11,840	11,549	9,829	8,967	2.5	17.5	9.6
Gadsden	48,315	46,389	45,087	41,116	4.2	2.9	9.7
Gulf	16,346	15,863	14,560	11,504	3.0	8.9	26.6
Jackson	50,458	49,746	46,755	41,375	1.4	6.4	13.0
Jefferson	14,519	14,761	12,902	11,296	-1.6	14.4	14.2
Leon	284,443	275,487	239,452	192,493	3.3	15.0	24.4
Liberty	8,698	8,365	7,021	5,569	4.0	19.1	26.1
Wakulla	31,283	30,776	22,863	14,202	1.6	34.6	61.0
Central Florida	836,274	803,470	666,347	546,805	4.1	20.6	21.9
DeSoto	34,777	34,862	32,209	23,865	-0.2	8.2	35.0
Hardee	27,645	27,731	26,938	19,499	-0.3	2.9	38.2
Highlands	100,748	98,786	87,366	68,432	2.0	13.1	27.7
Okeechobee	40,052	39,996	35,910	29,627	0.1	11.4	21.2
Polk	633,052	602,095	483,924	405,382	5.1	24.4	19.4
East Central Florida	3,508,060	3,265,795	2,617,481	2,026,136	7.4	24.8	29.2
Brevard	561,714	543,376	476,230	398,978	3.4	14.1	19.4
Lake**	316,569	297,047	210,527	152,104	6.6	41.1	38.4
Orange	1,252,396	1,145,956	896,344	677,491	9.3	27.8	32.3
Osceola	308,327	268,685	172,493	107,728	14.8	55.8	60.1
Seminole	442,903	422,718	365,199	287,521	4.8	15.8	27.0
Sumter	115,657	93,420	53,345	31,577	23.8	75.1	68.9
Volusia	510,494	494,593	443,343	370,737	3.2	11.6	19.6
North Central Florida	891,014	871,401	728,810	574,943	2.3	19.6	26.8
Alachua	254,893	247,336	217,955	181,596	3.1	13.5	20.0
Bradford	27,310	28,520	26,088	22,515	-4.2	9.3	15.9
Columbia	68,163	67,531	56,513	42,613	0.9	19.5	32.6
Dixie	16,468	16,422	13,827	10,585	0.3	18.8	30.6
Gilchrist	16,839	16,939	14,437	9,667	-0.6	17.3	49.3
Hamilton	14,630	14,799	13,327	10,930	-1.1	11.0	21.9
Lafayette	8,664	8,870	7,022	5,578	-2.3	26.3	25.9
Levy	40,448	40,801	34,450	25,912	-0.9	18.4	32.9
Madison	19,200	19,224	18,733	16,569	-0.1	2.6	13.1
Marion**	341,205	331,303	258,916	194,835	3.0	28.0	32.9
Suwannee	44,452	41,551	34,844	26,780	7.0	19.2	30.1
Taylor	22,824	22,570	19,256	17,111	1.1	17.2	12.5
Union	15,918	15,535	13,442	10,252	2.5	15.6	31.1

**Table 5. Population Change by Decade for Regional Planning Councils in Florida,
1990 to 2015**
(Continued)

State, Regional Planning Council*, and County	Population				Percent Change		
	2015	2010	2000	1990	2010 to 2015	2000 to 2010	1990 to 2000
Northeast Florida	1,598,079	1,515,656	1,243,005	1,018,984	5.4	21.9	22.0
Baker	27,017	27,115	22,259	18,486	-0.4	21.8	20.4
Clay	201,277	190,865	140,814	105,986	5.5	35.5	32.9
Duval	905,574	864,263	778,879	672,971	4.8	11.0	15.7
Flagler	101,353	95,696	49,832	28,701	5.9	92.0	73.6
Nassau	76,536	73,314	57,663	43,941	4.4	27.1	31.2
Putnam	72,756	74,364	70,423	65,070	-2.2	5.6	8.2
St. Johns	213,566	190,039	123,135	83,829	12.4	54.3	46.9
South Florida	4,555,507	4,317,613	3,956,386	3,270,749	5.5	9.1	21.0
Broward	1,827,367	1,748,066	1,623,018	1,255,531	4.5	7.7	29.3
Miami-Dade**	2,653,934	2,496,457	2,253,779	1,937,194	6.3	10.8	16.3
Monroe	74,206	73,090	79,589	78,024	1.5	-8.2	2.0
Southwest Florida	1,619,827	1,531,724	1,206,639	909,327	5.8	26.9	32.7
Charlottee	167,141	159,978	141,627	110,975	4.5	13.0	27.6
Collier	343,802	321,520	251,377	152,099	6.9	27.9	65.3
Glades	12,853	12,884	10,576	7,591	-0.2	21.8	39.3
Hendry	38,096	39,140	36,210	25,773	-2.7	8.1	40.5
Lee	665,845	618,754	440,888	335,113	7.6	40.3	31.6
Sarasota	392,090	379,448	325,961	277,776	3.3	16.4	17.3
Tampa Bay	3,425,776	3,247,312	2,778,100	2,373,179	5.5	16.9	17.1
Citrus	141,501	141,236	118,085	93,513	0.2	19.6	26.3
Hernando	176,819	172,778	130,802	101,115	2.3	32.1	29.4
Hillsborough	1,325,563	1,229,226	998,948	834,054	7.8	23.1	19.8
Manatee	349,334	322,833	264,002	211,707	8.2	22.3	24.7
Pasco	487,588	464,697	344,768	281,131	4.9	34.8	22.6
Pinellas	944,971	916,542	921,495	851,659	3.1	-0.5	8.2
Treasure Coast	1,959,554	1,882,269	1,563,564	1,204,782	4.1	20.4	29.8
Indian River	143,326	138,028	112,947	90,208	3.8	22.2	25.2
Martin	150,062	146,318	126,731	100,900	2.6	15.5	25.6
Palm Beach	1,378,417	1,320,134	1,131,191	863,503	4.4	16.7	31.0
St. Lucie	287,749	277,789	192,695	150,171	3.6	44.2	28.3
West Florida	940,641	898,531	811,006	675,633	4.7	10.8	20.0
Bay	173,310	168,852	148,217	126,994	2.6	13.9	16.7
Escambia	306,944	297,619	294,410	262,798	3.1	1.1	12.0
Holmes	19,902	19,927	18,564	15,778	-0.1	7.3	17.7
Okaloosa	191,898	180,822	170,498	143,777	6.1	6.1	18.6
Santa Rosa	162,925	151,372	117,743	81,608	7.6	28.6	44.3
Walton	60,687	55,043	40,601	27,759	10.3	35.6	46.3
Washington	24,975	24,896	20,973	16,919	0.3	18.7	24.0

* In the 2015 Legislative Session, SB 1216 revised the number of Florida Planning Regions. District 5 was eliminated, and the counties were reassigned to 3 other districts. The regional planning councils are the same county configuration as the current districts.

** Includes US Census Bureau corrections as of February 11, 2014.

Table 6. Rank of Florida Counties by Population Size in 2015 and Population Distribution, 1990 to 2015

Rank	State and County	Population				Percent of State Population			
		2015	2010	2000	1990	2015	2010	2000	1990
	FLORIDA*	19,815,183	18,801,332	15,982,824	12,938,071	100.00	100.00	100.00	100.00
1	Miami-Dade*	2,653,934	2,496,457	2,253,779	1,937,194	13.39	13.28	14.10	14.97
2	Broward	1,827,367	1,748,066	1,623,018	1,255,531	9.22	9.30	10.15	9.70
3	Palm Beach	1,378,417	1,320,134	1,131,191	863,503	6.96	7.02	7.08	6.67
4	Hillsborough	1,325,563	1,229,226	998,948	834,054	6.69	6.54	6.25	6.45
5	Orange	1,252,396	1,145,956	896,344	677,491	6.32	6.10	5.61	5.24
6	Pinellas	944,971	916,542	921,495	851,659	4.77	4.87	5.77	6.58
7	Duval	905,574	864,263	778,879	672,971	4.57	4.60	4.87	5.20
8	Lee	665,845	618,754	440,888	335,113	3.36	3.29	2.76	2.59
9	Polk	633,052	602,095	483,924	405,382	3.19	3.20	3.03	3.13
10	Brevard	561,714	543,376	476,230	398,978	2.83	2.89	2.98	3.08
11	Volusia	510,494	494,593	443,343	370,737	2.58	2.63	2.77	2.87
12	Pasco	487,588	464,697	344,768	281,131	2.46	2.47	2.16	2.17
13	Seminole	442,903	422,718	365,199	287,521	2.24	2.25	2.28	2.22
14	Sarasota	392,090	379,448	325,961	277,776	1.98	2.02	2.04	2.15
15	Manatee	349,334	322,833	264,002	211,707	1.76	1.72	1.65	1.64
16	Collier	343,802	321,520	251,377	152,099	1.74	1.71	1.57	1.18
17	Marion*	341,205	331,303	258,916	194,835	1.72	1.76	1.62	1.51
18	Lake*	316,569	297,047	210,527	152,104	1.60	1.58	1.32	1.18
19	Osceola	308,327	268,685	172,493	107,728	1.56	1.43	1.08	0.83
20	Escambia	306,944	297,619	294,410	262,798	1.55	1.58	1.84	2.03
21	St. Lucie	287,749	277,789	192,695	150,171	1.45	1.48	1.21	1.16
22	Leon	284,443	275,487	239,452	192,493	1.44	1.47	1.50	1.49
23	Alachua	254,893	247,336	217,955	181,596	1.29	1.32	1.36	1.40
24	St. Johns	213,566	190,039	123,135	83,829	1.08	1.01	0.77	0.65
25	Clay	201,277	190,865	140,814	105,986	1.02	1.02	0.88	0.82
26	Okaloosa	191,898	180,822	170,498	143,777	0.97	0.96	1.07	1.11
27	Hernando	176,819	172,778	130,802	101,115	0.89	0.92	0.82	0.78
28	Bay	173,310	168,852	148,217	126,994	0.87	0.90	0.93	0.98
29	Charlotte	167,141	159,978	141,627	110,975	0.84	0.85	0.89	0.86
30	Santa Rosa	162,925	151,372	117,743	81,608	0.82	0.81	0.74	0.63
31	Martin	150,062	146,318	126,731	100,900	0.76	0.78	0.79	0.78
32	Indian River	143,326	138,028	112,947	90,208	0.72	0.73	0.71	0.70
33	Citrus	141,501	141,236	118,085	93,513	0.71	0.75	0.74	0.72
34	Sumter	115,657	93,420	53,345	31,577	0.58	0.50	0.33	0.24
35	Flagler	101,353	95,696	49,832	28,701	0.51	0.51	0.31	0.22

Table 6. Rank of Florida Counties by Population Size in 2015 and Population Distribution, 1990 to 2015

(Continued)

Rank	State and County	Population				Percent of State Population			
		2015	2010	2000	1990	2015	2010	2000	1990
36	Highlands	100,748	98,786	87,366	68,432	0.51	0.53	0.55	0.53
37	Nassau	76,536	73,314	57,663	43,941	0.39	0.39	0.36	0.34
38	Monroe	74,206	73,090	79,589	78,024	0.37	0.39	0.50	0.60
39	Putnam	72,756	74,364	70,423	65,070	0.37	0.40	0.44	0.50
40	Columbia	68,163	67,531	56,513	42,613	0.34	0.36	0.35	0.33
41	Walton	60,687	55,043	40,601	27,759	0.31	0.29	0.25	0.21
42	Jackson	50,458	49,746	46,755	41,375	0.25	0.26	0.29	0.32
43	Gadsden	48,315	46,389	45,087	41,116	0.24	0.25	0.28	0.32
44	Suwannee	44,452	41,551	34,844	26,780	0.22	0.22	0.22	0.21
45	Levy	40,448	40,801	34,450	25,912	0.20	0.22	0.22	0.20
46	Okeechobee	40,052	39,996	35,910	29,627	0.20	0.21	0.22	0.23
47	Hendry	38,096	39,140	36,210	25,773	0.19	0.21	0.23	0.20
48	DeSoto	34,777	34,862	32,209	23,865	0.18	0.19	0.20	0.18
49	Wakulla	31,283	30,776	22,863	14,202	0.16	0.16	0.14	0.11
50	Hardee	27,645	27,731	26,938	19,499	0.14	0.15	0.17	0.15
51	Bradford	27,310	28,520	26,088	22,515	0.14	0.15	0.16	0.17
52	Baker	27,017	27,115	22,259	18,486	0.14	0.14	0.14	0.14
53	Washington	24,975	24,896	20,973	16,919	0.13	0.13	0.13	0.13
54	Taylor	22,824	22,570	19,256	17,111	0.12	0.12	0.12	0.13
55	Holmes	19,902	19,927	18,564	15,778	0.10	0.11	0.12	0.12
56	Madison	19,200	19,224	18,733	16,569	0.10	0.10	0.12	0.13
57	Gilchrist	16,839	16,939	14,437	9,667	0.08	0.09	0.09	0.07
58	Dixie	16,468	16,422	13,827	10,585	0.08	0.09	0.09	0.08
59	Gulf	16,346	15,863	14,560	11,504	0.08	0.08	0.09	0.09
60	Union	15,918	15,535	13,442	10,252	0.08	0.08	0.08	0.08
61	Hamilton	14,630	14,799	13,327	10,930	0.07	0.08	0.08	0.08
62	Calhoun	14,549	14,625	13,017	11,011	0.07	0.08	0.08	0.09
63	Jefferson	14,519	14,761	12,902	11,296	0.07	0.08	0.08	0.09
64	Glades	12,853	12,884	10,576	7,591	0.06	0.07	0.07	0.06
65	Franklin	11,840	11,549	9,829	8,967	0.06	0.06	0.06	0.07
66	Liberty	8,698	8,365	7,021	5,569	0.04	0.04	0.04	0.04
67	Lafayette	8,664	8,870	7,022	5,578	0.04	0.05	0.04	0.04

* Includes US Census Bureau corrections as of February 11, 2014.

Table 7. Rank of Florida Counties by Percent Change in Population, 2010 to 2015

Rank	State and County	Percent Change	Population		Rank	State and County	Percent Change	Population	
			2015	2010				2015	2010
	FLORIDA*	5.4	19,815,183	18,801,332					
1	Sumter	23.8	115,657	93,420	34	Pinellas	3.1	944,971	916,542
2	Osceola	14.8	308,327	268,685	35	Alachua	3.1	254,893	247,336
3	St. Johns	12.4	213,566	190,039	36	Gulf	3.0	16,346	15,863
4	Walton	10.3	60,687	55,043	37	Marion*	3.0	341,205	331,303
5	Orange	9.3	1,252,396	1,145,956	38	Bay	2.6	173,310	168,852
6	Manatee	8.2	349,334	322,833	39	Martin	2.6	150,062	146,318
7	Hillsborough	7.8	1,325,563	1,229,226	40	Franklin	2.5	11,840	11,549
8	Santa Rosa	7.6	162,925	151,372	41	Union	2.5	15,918	15,535
9	Lee	7.6	665,845	618,754	42	Hernando	2.3	176,819	172,778
10	Suwannee	7.0	44,452	41,551	43	Highlands	2.0	100,748	98,786
11	Collier	6.9	343,802	321,520	44	Wakulla	1.6	31,283	30,776
12	Lake*	6.6	316,569	297,047	45	Monroe	1.5	74,206	73,090
13	Miami-Dade*	6.3	2,653,934	2,496,457	46	Jackson	1.4	50,458	49,746
14	Okaloosa	6.1	191,898	180,822	47	Taylor	1.1	22,824	22,570
15	Flagler	5.9	101,353	95,696	48	Columbia	0.9	68,163	67,531
16	Clay	5.5	201,277	190,865	49	Washington	0.3	24,975	24,896
17	Polk	5.1	633,052	602,095	50	Dixie	0.3	16,468	16,422
18	Pasco	4.9	487,588	464,697	51	Citrus	0.2	141,501	141,236
19	Duval	4.8	905,574	864,263	52	Okeechobee	0.1	40,052	39,996
20	Seminole	4.8	442,903	422,718	53	Madison	-0.1	19,200	19,224
21	Broward	4.5	1,827,367	1,748,066	54	Holmes	-0.1	19,902	19,927
22	Charlotte	4.5	167,141	159,978	55	Glades	-0.2	12,853	12,884
23	Palm Beach	4.4	1,378,417	1,320,134	56	DeSoto	-0.2	34,777	34,862
24	Nassau	4.4	76,536	73,314	57	Hardee	-0.3	27,645	27,731
25	Gadsden	4.2	48,315	46,389	58	Baker	-0.4	27,017	27,115
26	Liberty	4.0	8,698	8,365	59	Calhoun	-0.5	14,549	14,625
27	Indian River	3.8	143,326	138,028	60	Gilchrist	-0.6	16,839	16,939
28	St. Lucie	3.6	287,749	277,789	61	Levy	-0.9	40,448	40,801
29	Brevard	3.4	561,714	543,376	62	Hamilton	-1.1	14,630	14,799
30	Sarasota	3.3	392,090	379,448	63	Jefferson	-1.6	14,519	14,761
31	Leon	3.3	284,443	275,487	64	Putnam	-2.2	72,756	74,364
32	Volusia	3.2	510,494	494,593	65	Lafayette	-2.3	8,664	8,870
33	Escambia	3.1	306,944	297,619	66	Hendry	-2.7	38,096	39,140
					67	Bradford	-4.2	27,310	28,520

* Includes US Census Bureau corrections as of February 11, 2014.

Figure 1. Percent Change in Population, 2010 to 2015

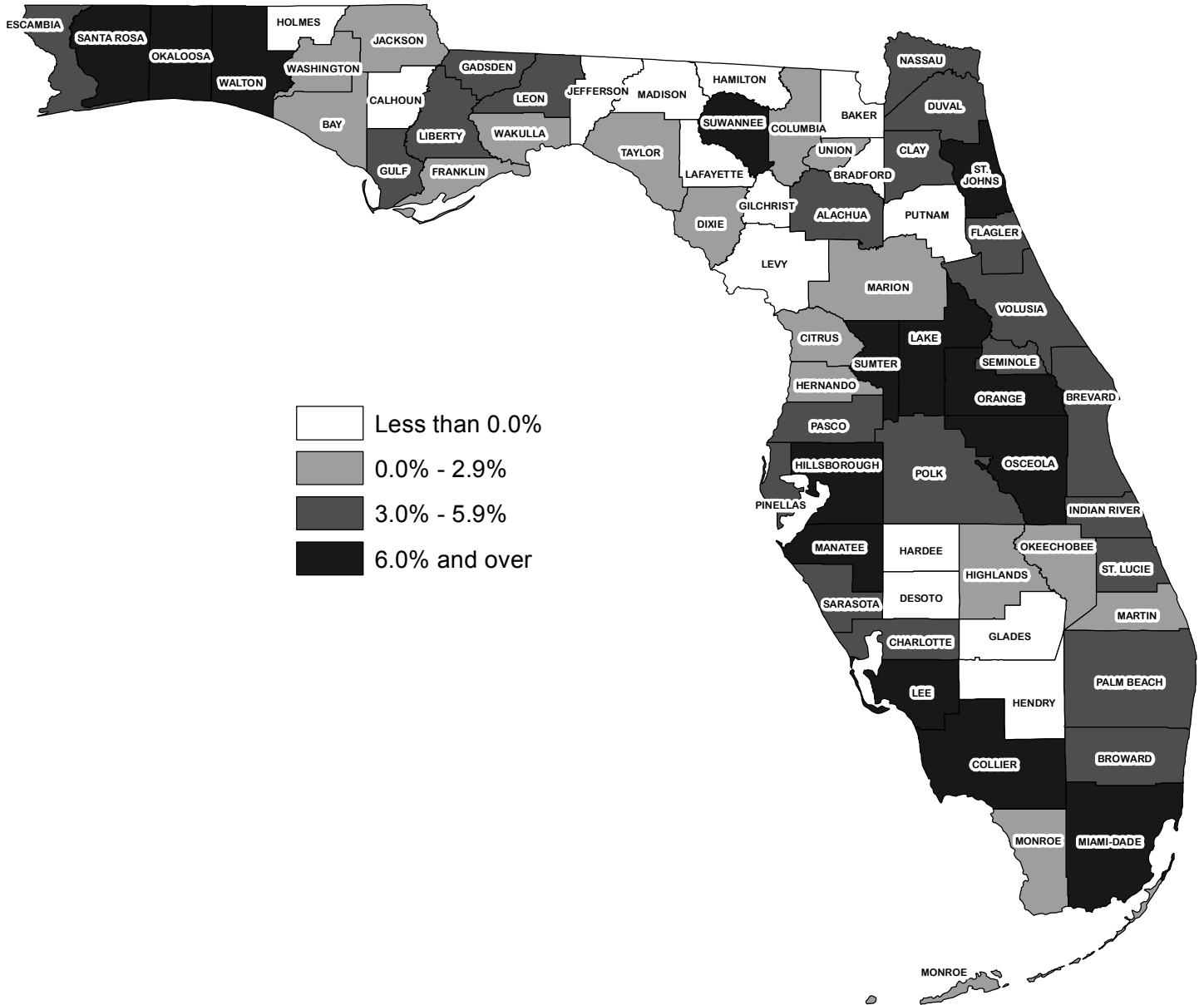


Table 8. Rank of Florida Counties by Population Change, 2010 to 2015

Rank	State and County	Change	Population		Rank	State and County	Change	Population	
			2015	2010				2015	2010
	FLORIDA*	1,013,851	19,815,183	18,801,332					
1	Miami-Dade*	157,477	2,653,934	2,496,457	34	Hernando	4,041	176,819	172,778
2	Orange	106,440	1,252,396	1,145,956	35	Martin	3,744	150,062	146,318
3	Hillsborough	96,337	1,325,563	1,229,226	36	Nassau	3,222	76,536	73,314
4	Broward	79,301	1,827,367	1,748,066	37	Suwannee	2,901	44,452	41,551
5	Palm Beach	58,283	1,378,417	1,320,134	38	Highlands	1,962	100,748	98,786
6	Lee	47,091	665,845	618,754	39	Gadsden	1,926	48,315	46,389
7	Duval	41,311	905,574	864,263	40	Monroe	1,116	74,206	73,090
8	Osceola	39,642	308,327	268,685	41	Jackson	712	50,458	49,746
9	Polk	30,957	633,052	602,095	42	Columbia	632	68,163	67,531
10	Pinellas	28,429	944,971	916,542	43	Wakulla	507	31,283	30,776
11	Manatee	26,501	349,334	322,833	44	Gulf	483	16,346	15,863
12	St. Johns	23,527	213,566	190,039	45	Union	383	15,918	15,535
13	Pasco	22,891	487,588	464,697	46	Liberty	333	8,698	8,365
14	Collier	22,282	343,802	321,520	47	Franklin	291	11,840	11,549
15	Sumter	22,237	115,657	93,420	48	Citrus	265	141,501	141,236
16	Seminole	20,185	442,903	422,718	49	Taylor	254	22,824	22,570
17	Lake*	19,522	316,569	297,047	50	Washington	79	24,975	24,896
18	Brevard	18,338	561,714	543,376	51	Okeechobee	56	40,052	39,996
19	Volusia	15,901	510,494	494,593	52	Dixie	46	16,468	16,422
20	Sarasota	12,642	392,090	379,448	53	Madison	-24	19,200	19,224
21	Santa Rosa	11,553	162,925	151,372	54	Holmes	-25	19,902	19,927
22	Okaloosa	11,076	191,898	180,822	55	Glades	-31	12,853	12,884
23	Clay	10,412	201,277	190,865	56	Calhoun	-76	14,549	14,625
24	St. Lucie	9,960	287,749	277,789	57	DeSoto	-85	34,777	34,862
25	Marion*	9,902	341,205	331,303	58	Hardee	-86	27,645	27,731
26	Escambia	9,325	306,944	297,619	59	Baker	-98	27,017	27,115
27	Leon	8,956	284,443	275,487	60	Gilchrist	-100	16,839	16,939
28	Alachua	7,557	254,893	247,336	61	Hamilton	-169	14,630	14,799
29	Charlotte	7,163	167,141	159,978	62	Lafayette	-206	8,664	8,870
30	Flagler	5,657	101,353	95,696	63	Jefferson	-242	14,519	14,761
31	Walton	5,644	60,687	55,043	64	Levy	-353	40,448	40,801
32	Indian River	5,298	143,326	138,028	65	Hendry	-1,044	38,096	39,140
33	Bay	4,458	173,310	168,852	66	Bradford	-1,210	27,310	28,520
					67	Putnam	-1,608	72,756	74,364

* Includes US Census Bureau corrections as of February 11, 2014.

Figure 2. Population Change, 2010 to 2015

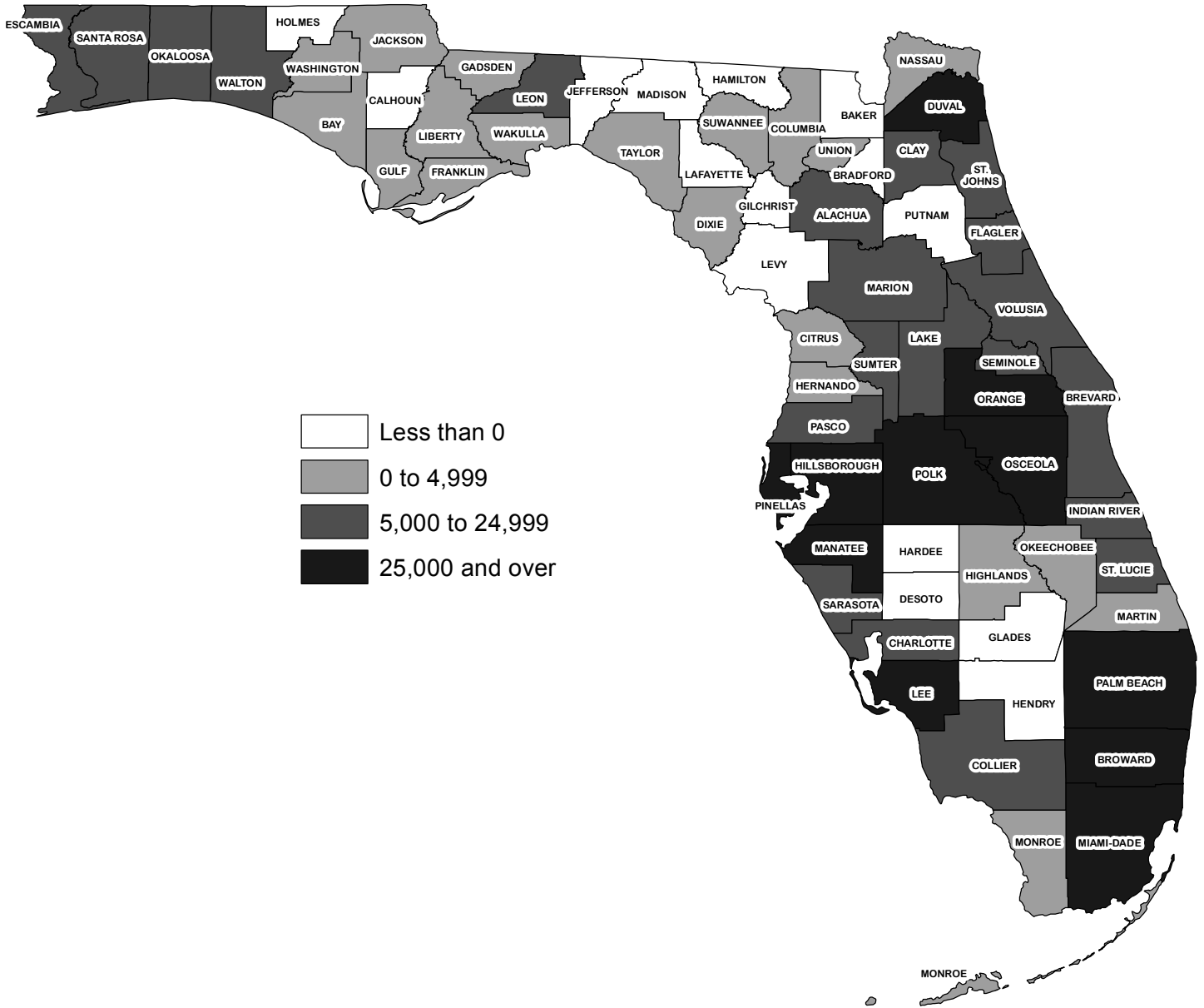


Table 9. Rank of Top 100 Cities in Florida by Population Size, 2000 to 2015

City	Population			Rank			Percent Change	
	2015	2010	2000	2015	2010	2000	2010 to 2015	2000 to 2010
Jacksonville	861,252	821,784	735,617	1	1	1	4.8	11.7
Miami*	439,509	399,508	362,470	2	2	2	10.0	10.2
Tampa	358,279	335,709	303,447	3	3	3	6.7	10.6
Orlando	262,949	238,300	185,951	4	5	6	10.3	28.2
St. Petersburg	256,681	244,769	248,232	5	4	4	4.9	-1.4
Hialeah*	233,053	224,667	226,419	6	6	5	3.7	-0.8
Tallahassee	187,996	181,376	150,624	7	7	8	3.6	20.4
Fort Lauderdale	175,123	165,521	152,397	8	8	7	5.8	8.6
Port St. Lucie	174,132	164,603	88,769	9	9	15	5.8	85.4
Cape Coral	166,508	154,305	102,286	10	10	13	7.9	50.9
Pembroke Pines*	159,922	154,019	137,427	11	11	10	3.8	12.1
Hollywood	144,926	140,768	139,368	12	12	9	3.0	1.0
Miramar	132,096	122,041	72,739	13	14	25	8.2	67.8
Gainesville*	127,955	124,476	95,447	14	13	14	2.8	30.4
Coral Springs	124,282	121,096	117,549	15	15	11	2.6	3.0
Clearwater	110,679	107,685	108,789	16	16	12	2.8	-1.0
Miami Gardens*	109,951	107,166	(X)	17	17	(X)	2.6	(X)
Palm Bay	107,481	103,190	79,413	18	18	20	4.2	29.9
West Palm Beach*	106,525	100,343	82,103	19	19	19	6.2	22.2
Pompano Beach	106,260	99,845	78,191	20	20	22	6.4	27.7
Lakeland	101,517	97,422	78,452	21	21	21	4.2	24.2
Davie	96,908	91,992	75,720	22	22	23	5.3	21.5
Miami Beach*	91,714	87,778	87,933	23	23	16	4.5	-0.2
Sunrise	88,630	84,439	85,787	24	26	17	5.0	-1.6
Boca Raton	87,766	84,392	74,764	25	27	24	4.0	12.9
Deltona	87,497	85,182	69,543	26	24	27	2.7	22.5
Plantation	87,496	84,955	82,934	27	25	18	3.0	2.4
Largo	80,747	77,648	69,371	28	28	28	4.0	11.9
Palm Coast	79,821	75,180	32,732	29	30	62	6.2	129.7
Melbourne*	79,600	76,205	71,382	30	29	26	4.5	6.8
Deerfield Beach	76,662	75,018	64,585	31	31	29	2.2	16.2
Boynton Beach	72,784	68,217	60,389	32	32	31	6.7	13.0
Fort Myers	72,395	62,298	48,208	33	35	41	16.2	29.2
Lauderhill	69,651	66,887	57,585	34	33	34	4.1	16.2
Homestead*	69,533	60,509	31,909	35	38	64	14.9	89.6
Kissimmee	66,592	59,682	47,814	36	40	42	11.6	24.8
Weston	65,734	65,333	49,286	37	34	40	0.6	32.6
Daytona Beach	63,534	61,005	64,112	38	36	30	4.1	-4.8
Delray Beach	63,175	60,522	60,020	39	37	32	4.4	0.8
North Miami*	62,380	58,912	59,880	40	41	33	5.9	-1.6
Tamarac	62,264	60,427	55,588	41	39	36	3.0	8.7
North Port	62,235	57,357	22,797	42	42	79	8.5	151.6
Wellington	59,860	56,508	38,216	43	43	53	5.9	47.9
Jupiter	59,108	55,156	39,328	44	46	51	7.2	40.2
Port Orange	58,656	56,048	45,823	45	45	44	4.7	22.3
Ocala	58,355	56,315	45,943	46	44	43	3.6	22.6
Sanford	56,900	53,570	38,291	47	47	52	6.2	39.9
Coconut Creek	56,593	52,909	43,566	48	49	46	7.0	21.4
Margate	55,851	53,284	53,909	49	48	37	4.8	-1.2
Doral*	55,660	45,709	(X)	50	56	(X)	21.8	(X)
Pensacola	53,058	51,923	56,255	51	50	35	2.2	-7.7
Sarasota	52,905	51,917	52,715	52	51	38	1.9	-1.5

Table 9. Rank of Top 100 Cities in Florida by Population Size, 2000 to 2015

(Continued)

City	Population			Rank			Percent Change	
	2015	2010	2000	2015	2010	2000	2010 to 2015	2000 to 2010
Bradenton	52,534	49,546	49,504	53	52	39	6.0	0.1
Pinellas Park	51,790	49,079	45,658	54	53	45	5.5	7.5
Palm Beach Gardens*	50,521	48,440	35,058	55	54	59	4.3	38.2
Coral Gables*	49,397	46,776	42,249	56	55	47	5.6	10.7
Apopka	46,571	41,542	26,642	57	60	72	12.1	55.9
Bonita Springs*	46,568	43,857	32,797	58	57	61	6.2	33.7
Titusville	45,325	43,761	40,670	59	58	50	3.6	7.6
Cutler Bay	44,109	40,286	(X)	60	65	(X)	9.5	(X)
North Miami Beach	43,533	41,523	40,786	61	61	49	4.8	1.8
Oakland Park	43,390	41,363	30,966	62	63	67	4.9	33.6
Altamonte Springs	43,325	41,496	41,200	63	62	48	4.4	0.7
North Lauderdale	43,232	41,023	32,264	64	64	63	5.4	27.1
Fort Pierce	42,119	41,590	37,516	65	59	54	1.3	10.9
St. Cloud	41,316	35,183	20,074	66	73	88	17.4	75.3
Ocoee	40,171	35,579	24,391	67	70	77	12.9	45.9
Ormond Beach	40,013	38,137	36,301	68	66	56	4.9	5.1
Winter Garden	39,871	34,568	14,351	69	76	111	15.3	140.9
Greenacres	38,943	37,573	27,569	70	67	71	3.6	36.3
Hallandale Beach	38,424	37,113	34,282	71	68	60	3.5	8.3
Winter Haven	38,085	33,874	26,487	72	78	73	12.4	27.9
Lake Worth	37,674	34,910	35,133	73	74	58	7.9	-0.6
Aventura	37,473	35,762	25,267	74	69	76	4.8	41.5
Oviedo	36,819	33,342	26,316	75	79	74	10.4	26.7
Royal Palm Beach	36,731	34,140	21,523	76	77	81	7.6	58.6
Plant City	36,710	34,721	29,760	77	75	68	5.7	16.7
Panama City*	35,835	35,505	36,417	78	71	55	0.9	-2.5
Dunedin	35,783	35,321	35,691	79	72	57	1.3	-1.0
Winter Springs	34,901	33,282	30,860	80	80	66	4.9	7.8
Lauderdale Lakes	34,201	32,593	31,705	81	81	65	4.9	2.8
Riviera Beach	33,953	32,488	29,884	82	82	69	4.5	8.7
Cooper City	33,176	28,547	27,914	83	86	70	16.2	2.3
Clermont	32,348	28,742	9,338	84	85	156	12.5	207.8
Dania Beach	30,644	29,639	20,061	85	83	89	3.4	47.7
DeLand	30,493	27,031	20,904	86	88	86	12.8	29.3
Miami Lakes	30,209	29,361	(X)	87	84	(X)	2.9	(X)
Estero**	30,118	(X)	(X)	88	(X)	(X)	(X)	(X)
Winter Park	28,967	27,852	24,090	89	87	78	4.0	15.6
Parkland	28,128	23,962	13,835	90	93	115	17.4	73.2
Casselberry	27,614	26,241	23,438	91	89	80	5.2	12.0
Rockledge	26,165	24,926	20,170	92	90	87	5.0	23.6
Temple Terrace	25,567	24,541	20,918	93	92	85	4.2	17.3
Key West	24,663	24,649	25,478	94	91	75	0.1	-3.3
Tarpon Springs	24,421	23,484	21,003	95	94	82	4.0	11.8
New Smyrna Beach	24,285	22,464	20,048	96	96	90	8.1	12.1
Palmetto Bay*	23,843	23,408	(X)	97	95	(X)	1.9	(X)
Crestview	23,460	20,978	14,766	98	100	109	11.8	42.1
Sebastian	23,137	21,929	16,181	99	97	99	5.5	35.5
Hialeah Gardens	23,004	21,744	19,297	100	98	92	5.8	12.7

* Includes US Census Bureau corrections as of February 11, 2014.

** The Village of Estero was incorporated on December 31, 2014.

(X) Not incorporated at this time

Table 10. Rank of Top 100 Cities in Florida by Percent Change in Population, 2010 to 2015

Rank	City	Percent Change	Population		Rank	City	Percent Change	Population	
			2015	2010				2015	2010
1	Lake Buena Vista	120.0	22	10	51	San Antonio	8.3	1,232	1,138
2	Sweetwater	54.0	20,793	13,499	52	Miramar	8.2	132,096	122,041
3	Freeport	49.2	2,667	1,787	53	New Smyrna Beach	8.1	24,285	22,464
4	Groveland	38.4	12,077	8,729	54	Alachua	8.0	9,788	9,059
5	Davenport	31.1	3,786	2,888	55	Niceville	8.0	13,774	12,749
6	Gulf Stream	27.0	998	786	56	Maitland	8.0	17,007	15,751
7	Marianna	26.6	7,727	6,102	57	Belle Isle	7.9	6,464	5,988
8	Avon Park	23.3	10,895	8,836	58	Lake Worth	7.9	37,674	34,910
9	Doral*	21.8	55,660	45,709	59	Cape Coral	7.9	166,508	154,305
10	Bell	17.8	537	456	60	Royal Palm Beach	7.6	36,731	34,140
11	Palm Springs	17.7	22,282	18,928	61	Bunnell	7.4	2,875	2,676
12	St. Cloud	17.4	41,316	35,183	62	High Springs	7.3	5,742	5,350
13	Parkland	17.4	28,128	23,962	63	Wewahitchka	7.3	2,126	1,981
14	South Miami	17.1	13,656	11,657	64	Jupiter	7.2	59,108	55,156
15	Windermere	16.5	2,869	2,462	65	Leesburg	7.1	21,547	20,117
16	Cooper City	16.2	33,176	28,547	66	Fort Walton Beach	7.0	20,869	19,507
17	Fort Myers	16.2	72,395	62,298	67	Coconut Creek	7.0	56,593	52,909
18	Winter Garden	15.3	39,871	34,568	68	Dundee	6.9	3,974	3,717
19	Opa-locka	15.2	17,528	15,219	69	Cocoa	6.8	18,313	17,140
20	Lake Mary	15.1	15,905	13,822	70	Milton	6.8	9,425	8,826
21	Homestead*	14.9	69,533	60,509	71	Jacksonville Beach	6.8	22,805	21,362
22	North Bay Village	14.6	8,178	7,137	72	Everglades	6.8	427	400
23	Zephyrhills	13.0	15,010	13,288	73	Tampa	6.7	358,279	335,709
24	Ocoee	12.9	40,171	35,579	74	Boynton Beach	6.7	72,784	68,217
25	DeLand	12.8	30,493	27,031	75	Bronson	6.6	1,187	1,113
26	Clermont	12.5	32,348	28,742	76	Gretna	6.6	1,556	1,460
27	Midway	12.5	3,378	3,004	77	Mount Dora	6.4	13,167	12,370
28	Winter Haven	12.4	38,085	33,874	78	Pompano Beach	6.4	106,260	99,845
29	Apopka	12.1	46,571	41,542	79	Sanford	6.2	56,900	53,570
30	Florida City	11.8	12,577	11,245	80	Punta Gorda	6.2	17,675	16,641
31	Crestview	11.8	23,460	20,978	81	Bonita Springs*	6.2	46,568	43,857
32	Kissimmee	11.6	66,592	59,682	82	Palm Coast	6.2	79,821	75,180
33	Wildwood	11.4	7,473	6,709	83	West Palm Beach*	6.2	106,525	100,343
34	Minneola	11.3	10,470	9,403	84	Lake Alfred	6.1	5,322	5,015
35	Malone	11.0	2,317	2,088	85	Bradenton	6.0	52,534	49,546
36	Bal Harbour	10.5	2,778	2,513	86	Altha	6.0	568	536
37	Oviedo	10.4	36,819	33,342	87	Mexico Beach	6.0	1,136	1,072
38	Orlando	10.3	262,949	238,300	88	Wellington	5.9	59,860	56,508
39	West Melbourne	10.3	20,250	18,355	89	Dade City	5.9	6,816	6,437
40	Haines City*	10.2	22,660	20,560	90	North Miami*	5.9	62,380	58,912
41	Miami*	10.0	439,509	399,508	91	Mascotte	5.9	5,401	5,101
42	Umatilla	9.9	3,798	3,456	92	Eagle Lake	5.9	2,387	2,255
43	Auburndale	9.8	14,832	13,507	93	Fort Lauderdale	5.8	175,123	165,521
44	Cutler Bay	9.5	44,109	40,286	94	Hialeah Gardens	5.8	23,004	21,744
45	Orange City	9.2	11,569	10,599	95	Seminole	5.8	18,231	17,233
46	Lake Placid	8.6	2,415	2,223	96	Port St. Lucie	5.8	174,132	164,603
47	North Port	8.5	62,235	57,357	97	Bascom	5.8	128	121
48	Palm Shores	8.3	975	900	98	Plant City	5.7	36,710	34,721
49	Newberry	8.3	5,360	4,950	99	Bellevue	5.7	4,746	4,492
50	Tavares	8.3	15,106	13,951	100	South Bay	5.6	5,151	4,876

* Includes US Census Bureau corrections as of February 11, 2014.

Table 11. Rank of Top 100 Cities in Florida by Population Change, 2010 to 2015

Rank	City	Change	Population		Rank	City	Change	Population	
			2015	2010				2015	2010
1	Miami*	40,001	439,509	399,508	51	Largo	3,099	80,747	77,648
2	Jacksonville	39,468	861,252	821,784	52	Clearwater	2,994	110,679	107,685
3	Orlando	24,649	262,949	238,300	53	Bradenton	2,988	52,534	49,546
4	Tampa	22,570	358,279	335,709	54	Miami Gardens*	2,785	109,951	107,166
5	Cape Coral	12,203	166,508	154,305	55	Lake Worth	2,764	37,674	34,910
6	St. Petersburg	11,912	256,681	244,769	56	Lauderhill	2,764	69,651	66,887
7	Fort Myers	10,097	72,395	62,298	57	Bonita Springs*	2,711	46,568	43,857
8	Miramar	10,055	132,096	122,041	58	Pinellas Park	2,711	51,790	49,079
9	Doral*	9,951	55,660	45,709	59	Delray Beach	2,653	63,175	60,522
10	Fort Lauderdale	9,602	175,123	165,521	60	Coral Gables*	2,621	49,397	46,776
11	Port St. Lucie	9,529	174,132	164,603	61	Port Orange	2,608	58,656	56,048
12	Homestead*	9,024	69,533	60,509	62	Royal Palm Beach	2,591	36,731	34,140
13	Hialeah*	8,386	233,053	224,667	63	Margate	2,567	55,851	53,284
14	Sweetwater	7,294	20,793	13,499	64	Plantation	2,541	87,496	84,955
15	Kissimmee	6,910	66,592	59,682	65	Daytona Beach	2,529	63,534	61,005
16	Tallahassee	6,620	187,996	181,376	66	Crestview	2,482	23,460	20,978
17	Pompano Beach	6,415	106,260	99,845	67	Deltona	2,315	87,497	85,182
18	West Palm Beach*	6,182	106,525	100,343	68	Opa-locka	2,309	17,528	15,219
19	St. Cloud	6,133	41,316	35,183	69	North Lauderdale	2,209	43,232	41,023
20	Pembroke Pines*	5,903	159,922	154,019	70	Haines City*	2,100	22,660	20,560
21	Winter Garden	5,303	39,871	34,568	71	Lake Mary	2,083	15,905	13,822
22	Apopka	5,029	46,571	41,542	72	Palm Beach Gardens*	2,081	50,521	48,440
23	Davie	4,916	96,908	91,992	73	Avon Park	2,059	10,895	8,836
24	North Port	4,878	62,235	57,357	74	Ocala	2,040	58,355	56,315
25	Palm Coast	4,641	79,821	75,180	75	Oakland Park	2,027	43,390	41,363
26	Cooper City	4,629	33,176	28,547	76	North Miami Beach	2,010	43,533	41,523
27	Ocoee	4,592	40,171	35,579	77	South Miami	1,999	13,656	11,657
28	Boynton Beach	4,567	72,784	68,217	78	Plant City	1,989	36,710	34,721
29	Palm Bay	4,291	107,481	103,190	79	West Melbourne	1,895	20,250	18,355
30	Winter Haven	4,211	38,085	33,874	80	Ormond Beach	1,876	40,013	38,137
31	Sunrise	4,191	88,630	84,439	81	Tamarac	1,837	62,264	60,427
32	Parkland	4,166	28,128	23,962	82	Altamonte Springs	1,829	43,325	41,496
33	Hollywood	4,158	144,926	140,768	83	New Smyrna Beach	1,821	24,285	22,464
34	Lakeland	4,095	101,517	97,422	84	Zephyrhills	1,722	15,010	13,288
35	Jupiter	3,952	59,108	55,156	85	Aventura	1,711	37,473	35,762
36	Miami Beach*	3,936	91,714	87,778	86	Deerfield Beach	1,644	76,662	75,018
37	Cutler Bay	3,823	44,109	40,286	87	Marianna	1,625	7,727	6,102
38	Coconut Creek	3,684	56,593	52,909	88	Winter Springs	1,619	34,901	33,282
39	Clermont	3,606	32,348	28,742	89	Lauderdale Lakes	1,608	34,201	32,593
40	Gainesville*	3,479	127,955	124,476	90	Titusville	1,564	45,325	43,761
41	Oviedo	3,477	36,819	33,342	91	Riviera Beach	1,465	33,953	32,488
42	North Miami*	3,468	62,380	58,912	92	Jacksonville Beach	1,443	22,805	21,362
43	DeLand	3,462	30,493	27,031	93	Leesburg	1,430	21,547	20,117
44	Melbourne*	3,395	79,600	76,205	94	Casselberry	1,373	27,614	26,241
45	Boca Raton	3,374	87,766	84,392	95	Greenacres	1,370	38,943	37,573
46	Palm Springs	3,354	22,282	18,928	96	Fort Walton Beach	1,362	20,869	19,507
47	Wellington	3,352	59,860	56,508	97	Florida City	1,332	12,577	11,245
48	Groveland	3,348	12,077	8,729	98	Auburndale	1,325	14,832	13,507
49	Sanford	3,330	56,900	53,570	99	Hallandale Beach	1,311	38,424	37,113
50	Coral Springs	3,186	124,282	121,096	100	Hialeah Gardens	1,260	23,004	21,744

* Includes US Census Bureau corrections as of February 11, 2014.

Table 12. Age Distribution (Percentage) of the Population of Florida and Its Counties, 1990 to 2014

State and County	Age	Census				State and County	Age	Census			
		2014	2010	2000	1990			2014	2010	2000	1990
FLORIDA	0-17	20.8	21.3	22.8	22.3	Citrus	0-17	14.8	15.9	17.2	17.7
	18-44	33.7	34.4	36.9	39.8		18-44	22.1	21.9	23.7	26.8
	45-64	26.8	27.0	22.7	19.7		45-64	29.8	30.3	26.9	24.3
	65+	18.6	17.3	17.6	18.2		65+	33.3	31.9	32.2	31.2
Alachua	0-17	18.0	17.9	20.2	21.9	Clay	0-17	24.9	26.3	28.0	28.9
	18-44	47.3	48.4	50.9	54.3		18-44	34.2	34.2	38.2	43.7
	45-64	22.1	22.9	19.3	14.5		45-64	27.4	27.8	24.0	18.9
	65+	12.7	10.8	9.6	9.2		65+	13.5	11.7	9.8	8.4
Baker	0-17	24.8	26.0	27.5	30.7	Collier	0-17	19.1	19.5	19.9	20.1
	18-44	36.6	36.7	40.6	44.1		18-44	27.4	28.0	31.2	35.3
	45-64	26.4	26.4	22.7	17.4		45-64	25.9	26.1	24.5	21.9
	65+	12.2	10.9	9.2	7.8		65+	27.5	26.4	24.5	22.7
Bay	0-17	21.7	22.0	24.0	25.6	Columbia	0-17	21.6	22.5	25.4	28.1
	18-44	34.8	35.4	38.8	42.3		18-44	33.8	33.9	36.7	38.5
	45-64	27.4	28.1	23.7	20.2		45-64	27.7	28.2	24.0	20.2
	65+	16.0	14.5	13.4	11.9		65+	17.0	15.4	14.0	13.2
Bradford	0-17	20.5	19.8	21.9	24.1	DeSoto	0-17	22.7	22.5	22.7	24.0
	18-44	35.3	37.6	41.6	44.2		18-44	35.6	35.8	37.9	36.9
	45-64	27.4	28.2	23.5	19.6		45-64	23.6	23.8	20.5	19.8
	65+	16.9	14.4	12.9	12.1		65+	18.1	17.9	19.0	19.2
Brevard	0-17	18.9	19.8	22.0	22.0	Dixie	0-17	18.3	19.1	22.1	24.6
	18-44	29.2	29.4	33.9	39.9		18-44	29.6	30.3	34.6	36.7
	45-64	30.2	30.4	24.3	21.5		45-64	30.9	31.2	26.2	24.2
	65+	21.7	20.4	19.9	16.6		65+	21.2	19.3	17.1	14.5
Broward	0-17	21.8	22.4	23.6	20.6	Duval	0-17	23.4	23.5	26.3	26.0
	18-44	34.7	35.6	38.6	40.2		18-44	37.8	38.9	42.0	46.0
	45-64	27.8	27.7	21.7	18.6		45-64	26.0	26.4	21.2	17.4
	65+	15.7	14.3	16.1	20.7		65+	12.8	11.1	10.5	10.6
Calhoun	0-17	20.6	21.4	23.2	26.2	Escambia	0-17	21.7	21.6	23.5	25.4
	18-44	35.6	36.0	40.5	39.9		18-44	36.2	37.2	41.1	43.3
	45-64	27.2	27.2	22.3	19.5		45-64	26.1	26.8	22.0	19.5
	65+	16.6	15.4	14.0	14.5		65+	16.1	14.4	13.3	11.9
Charlotte	0-17	13.5	14.3	15.7	15.7	Flagler	0-17	19.4	19.9	17.9	19.2
	18-44	21.2	21.2	23.3	26.9		18-44	27.2	26.9	25.1	29.6
	45-64	29.6	30.4	26.4	23.8		45-64	27.6	28.7	28.3	25.8
	65+	35.7	34.1	34.7	33.6		65+	25.9	24.5	28.6	25.4

Table 12. Age Distribution (Percentage) of the Population of Florida and Its Counties, 1990 to 2014

(Continued)

State and County	Age	Census				State and County	Age	Census			
		2014	2010	2000	1990			2014	2010	2000	1990
Franklin	0-17	16.8	17.1	20.2	24.1	Highlands	0-17	17.6	18.2	19.2	18.9
	18-44	36.0	36.2	32.6	33.6		18-44	23.9	24.3	25.6	26.0
	45-64	28.0	29.3	29.5	24.6		45-64	25.7	25.3	22.2	21.9
	65+	19.2	17.4	17.7	17.7		65+	32.8	32.2	33.0	33.2
Gadsden	0-17	22.4	24.2	26.4	29.8	Hillsborough	0-17	23.7	23.9	25.3	24.4
	18-44	34.6	33.6	38.4	39.5		18-44	38.2	38.8	41.0	44.8
	45-64	28.1	28.6	23.0	18.1		45-64	25.1	25.4	21.7	18.6
	65+	14.9	13.6	12.2	12.5		65+	13.0	11.8	12.0	12.2
Gilchrist	0-17	20.2	21.4	24.4	25.2	Holmes	0-17	20.5	21.5	23.1	25.0
	18-44	32.9	33.9	39.1	40.4		18-44	33.0	33.6	38.1	38.1
	45-64	28.0	27.8	22.9	20.8		45-64	27.8	27.7	24.0	21.2
	65+	19.0	16.9	13.6	13.6		65+	18.6	17.2	14.8	15.7
Glades	0-17	19.1	18.8	22.1	24.6	Indian River	0-17	17.9	18.8	19.2	19.5
	18-44	32.1	33.7	34.6	31.2		18-44	25.6	25.9	28.3	31.8
	45-64	25.6	26.0	24.5	24.8		45-64	28.2	28.1	23.3	21.6
	65+	23.2	21.5	18.8	19.3		65+	28.2	27.2	29.2	27.1
Gulf	0-17	15.3	16.2	19.9	24.8	Jackson	0-17	19.1	19.9	22.3	25.0
	18-44	37.0	37.4	39.8	37.2		18-44	36.3	36.2	39.3	40.5
	45-64	29.8	30.0	25.4	22.9		45-64	27.5	28.2	23.8	19.7
	65+	17.8	16.3	14.9	15.2		65+	17.1	15.7	14.6	14.9
Hamilton	0-17	19.8	19.7	23.5	29.0	Jefferson	0-17	18.1	18.6	22.7	29.1
	18-44	36.4	39.4	42.5	42.3		18-44	31.6	32.6	37.1	37.2
	45-64	27.9	27.8	22.8	17.3		45-64	31.3	32.3	25.7	19.0
	65+	15.9	13.1	11.2	11.4		65+	19.0	16.5	14.5	14.8
Hardee	0-17	27.0	27.7	27.6	29.4	Lafayette	0-17	21.0	20.1	21.7	24.9
	18-44	37.2	37.4	39.3	36.5		18-44	41.2	43.4	44.7	45.2
	45-64	22.3	22.0	19.2	19.0		45-64	24.2	24.3	21.3	18.9
	65+	13.5	12.9	13.9	15.1		65+	13.6	12.2	12.4	11.0
Hendry	0-17	28.6	27.8	30.0	31.7	Lake	0-17	20.0	20.8	20.3	20.0
	18-44	36.4	38.6	41.6	39.0		18-44	28.0	28.3	29.5	30.5
	45-64	22.3	22.1	18.3	18.5		45-64	27.4	26.7	23.8	22.1
	65+	12.7	11.5	10.1	10.9		65+	24.7	24.2	26.4	27.4
Hernando	0-14	18.8	19.8	18.9	18.5	Lee	0-17	19.1	19.5	19.6	19.7
	15-44	26.6	26.6	25.8	27.3		18-44	29.5	29.7	30.1	34.0
	45-64	27.8	27.9	24.4	23.6		45-64	27.1	27.3	24.8	21.7
	65+	26.7	25.8	30.9	30.6		65+	24.3	23.5	25.4	24.6

Table 12. Age Distribution (Percentage) of the Population of Florida and Its Counties, 1990 to 2014

(Continued)

State and County	Age	Census				State and County	Age	Census			
		2014	2010	2000	1990			2014	2010	2000	1990
Leon	0-17	19.6	19.6	21.3	22.6	Nassau	0-17	20.5	21.7	25.0	27.2
	18-44	46.9	48.0	50.4	54.2		18-44	30.2	31.1	36.0	41.5
	45-64	22.1	23.0	20.0	15.1		45-64	30.5	30.9	26.3	21.2
	65+	11.4	9.4	8.3	8.2		65+	18.8	16.2	12.6	10.1
Levy	0-17	20.2	21.1	23.6	24.4	Okaloosa	0-17	22.3	22.3	24.7	26.0
	18-44	28.7	28.8	31.9	34.2		18-44	35.3	36.0	40.7	45.4
	45-64	29.9	30.6	26.6	22.6		45-64	27.0	27.7	22.4	19.4
	65+	21.1	19.4	17.9	18.8		65+	15.3	13.9	12.1	9.2
Liberty	0-17	20.5	21.2	21.8	24.3	Okeechobee	0-17	23.6	24.0	25.2	27.4
	18-44	41.2	41.1	47.0	46.0		18-44	33.8	34.2	36.5	36.3
	45-64	26.8	27.1	21.0	18.5		45-64	24.7	24.9	21.9	20.3
	65+	11.5	10.6	10.2	11.2		65+	17.8	17.0	16.3	16.0
Madison	0-17	21.3	21.8	25.3	27.7	Orange	0-17	23.6	23.6	25.3	24.0
	18-44	33.7	34.2	37.5	39.7		18-44	41.7	42.6	44.7	48.1
	45-64	27.4	28.2	22.7	18.6		45-64	24.0	24.1	20.0	17.3
	65+	17.6	15.8	14.6	14.0		65+	10.7	9.7	10.0	10.6
Manatee	0-17	20.1	20.5	20.7	19.3	Osceola	0-17	25.2	26.2	26.8	25.3
	18-44	28.0	28.6	31.2	33.0		18-44	37.1	37.6	40.2	41.8
	45-64	27.4	27.6	23.3	19.8		45-64	25.7	25.2	21.6	19.0
	65+	24.6	23.3	24.9	28.0		65+	12.0	11.0	11.4	13.8
Marion	0-17	18.7	19.4	21.4	22.3	Palm Beach	0-17	19.9	20.4	21.3	19.8
	18-44	27.1	27.6	30.2	34.0		18-44	31.0	31.6	33.5	37.0
	45-64	27.1	27.3	23.9	21.7		45-64	26.5	26.4	22.0	19.0
	65+	27.1	25.8	24.5	22.0		65+	22.6	21.6	23.2	24.2
Martin	0-17	16.6	17.6	18.6	17.7	Pasco	0-17	20.8	21.2	20.2	18.0
	18-44	25.1	25.4	28.2	33.2		18-44	30.3	30.7	30.0	29.4
	45-64	29.7	29.7	24.9	21.8		45-64	27.4	27.4	23.1	20.4
	65+	28.5	27.3	28.2	27.3		65+	21.5	20.7	26.8	32.2
Miami-Dade	0-17	21.4	21.9	24.8	24.3	Pinellas	0-17	17.2	17.8	19.3	17.9
	18-44	37.5	38.5	40.1	41.5		18-44	29.5	30.3	33.8	36.0
	45-64	26.0	25.6	21.7	20.3		45-64	30.3	30.8	24.5	20.2
	65+	15.1	14.1	13.3	13.9		65+	23.1	21.2	22.5	25.9
Monroe	0-17	14.8	15.1	17.1	17.5	Polk	0-17	23.0	23.5	24.4	24.3
	18-44	31.1	32.5	37.4	43.0		18-44	32.3	32.8	34.7	37.0
	45-64	33.9	35.4	30.9	23.7		45-64	25.5	25.6	22.5	20.3
	65+	20.1	17.1	14.6	15.8		65+	19.2	18.0	18.3	18.4

Table 12. Age Distribution (Percentage) of the Population of Florida and Its Counties, 1990 to 2014

(Continued)

State and County	Age	Census				State and County	Age	Census			
		2014	2010	2000	1990			2014	2010	2000	1990
Putnam	0-17	21.9	22.6	24.6	25.6	Suwannee	0-17	21.3	22.7	24.0	26.6
	18-44	29.4	29.3	31.9	34.6		18-44	32.9	30.7	33.6	34.8
	45-64	28.4	29.2	25.1	22.0		45-64	26.3	27.7	25.4	21.8
	65+	20.3	18.9	18.5	17.8		65+	19.6	18.9	16.9	16.8
St. Johns	0-17	22.1	23.1	23.1	22.5	Taylor	0-17	19.1	19.7	24.6	28.3
	18-44	31.0	31.0	34.6	40.0		18-44	34.8	35.5	36.6	37.7
	45-64	29.4	30.2	26.4	21.2		45-64	28.3	29.2	24.8	20.7
	65+	17.4	15.7	15.9	16.3		65+	17.7	15.6	14.1	13.3
St. Lucie	0-17	21.6	22.3	22.6	23.2	Union	0-17	18.8	19.4	21.8	25.7
	18-44	30.8	31.0	31.7	35.7		18-44	38.8	38.8	48.5	50.4
	45-64	26.8	26.7	23.0	20.2		45-64	31.2	31.9	22.2	16.5
	65+	20.8	19.9	22.7	20.8		65+	11.3	10.0	7.5	7.5
Santa Rosa	0-17	22.8	23.9	26.6	27.2	Volusia	0-17	18.4	18.9	20.3	19.8
	18-44	34.8	34.5	38.3	42.9		18-44	30.1	30.8	33.5	37.3
	45-64	28.3	28.7	24.1	20.4		45-64	28.9	29.3	24.2	20.2
	65+	14.1	12.9	11.0	9.5		65+	22.6	21.1	22.1	22.7
Sarasota	0-17	15.0	15.7	16.2	15.8	Wakulla	0-17	21.8	22.5	25.6	28.3
	18-44	24.0	24.1	26.7	30.3		18-44	37.2	37.4	39.3	39.6
	45-64	28.3	29.0	25.6	21.8		45-64	28.6	29.3	24.7	20.5
	65+	32.7	31.2	31.5	32.1		65+	12.5	10.8	10.3	11.5
Seminole	0-17	22.2	23.0	25.4	25.5	Walton	0-17	20.8	20.6	21.7	23.9
	18-44	36.6	37.0	40.4	45.3		18-44	32.5	33.1	35.6	35.7
	45-64	27.4	28.0	23.6	19.0		45-64	29.4	30.1	26.9	24.1
	65+	13.8	12.0	10.6	10.3		65+	17.4	16.2	15.8	16.4
Sumter	0-17	8.7	9.1	16.1	22.4	Washington	0-17	20.7	21.2	23.4	25.4
	18-44	18.0	18.6	29.2	33.2		18-44	35.0	35.5	36.3	35.0
	45-64	24.8	28.9	27.3	22.2		45-64	27.8	27.9	24.7	22.1
	65+	48.5	43.4	27.4	22.3		65+	16.5	15.4	15.7	17.6

Table 13. Rank of Florida Counties by Percent of Population Aged 17 and Younger, 2014

Rank	State and County	Aged 17 and Younger		Rank	State and County	Aged 17 and Younger	
		Percent	Number			Percent	Number
	FLORIDA	20.8	4,058,750				
1	Hendry	28.6	10,834	34	Liberty	20.5	1,779
2	Hardee	27.0	7,495	35	Nassau	20.5	15,477
3	Osceola	25.2	74,522	36	Gilchrist	20.2	3,398
4	Clay	24.9	49,106	37	Levy	20.2	8,184
5	Baker	24.8	6,692	38	Manatee	20.1	68,085
				39	Lake	20.0	61,977
6	Hillsborough	23.7	308,220	40	Palm Beach	19.9	270,328
7	Okeechobee	23.6	9,404	41	Hamilton	19.8	2,848
8	Orange	23.6	290,101	42	Leon	19.6	55,219
9	Duval	23.4	208,077	43	Flagler	19.4	19,183
10	Polk	23.0	143,147	44	Collier	19.1	64,476
11	Santa Rosa	22.8	36,418	45	Glades	19.1	2,458
12	DeSoto	22.7	7,824	46	Jackson	19.1	9,571
13	Gadsden	22.4	10,797	47	Lee	19.1	124,761
14	Okaloosa	22.3	42,580	48	Taylor	19.1	4,387
15	Seminole	22.2	96,876	49	Brevard	18.9	104,222
16	St. Johns	22.1	45,844	50	Hernando	18.8	32,973
17	Putnam	21.9	15,918	51	Union	18.8	2,940
18	Broward	21.8	393,173	52	Marion	18.7	63,000
19	Wakulla	21.8	6,806	53	Volusia	18.4	92,612
20	Bay	21.7	37,031	54	Dixie	18.3	2,988
21	Escambia	21.7	65,883	55	Jefferson	18.1	2,641
22	Columbia	21.6	14,644	56	Alachua	18.0	45,138
23	St. Lucie	21.6	61,095	57	Indian River	17.9	25,240
24	Miami-Dade	21.4	558,368	58	Highlands	17.6	17,594
25	Madison	21.3	4,117	59	Pinellas	17.2	160,056
26	Suwannee	21.3	9,399	60	Franklin	16.8	1,984
27	Lafayette	21.0	1,826	61	Martin	16.6	24,718
28	Pasco	20.8	99,675	62	Gulf	15.3	2,536
29	Walton	20.8	12,419	63	Sarasota	15.0	58,091
30	Washington	20.7	5,165	64	Citrus	14.8	20,876
31	Calhoun	20.6	3,005	65	Monroe	14.8	10,989
32	Bradford	20.5	5,597	66	Charlotte	13.5	22,174
33	Holmes	20.5	4,109	67	Sumter	8.7	9,680

Figure 3. Percent of Population Aged 17 and Younger, 2014

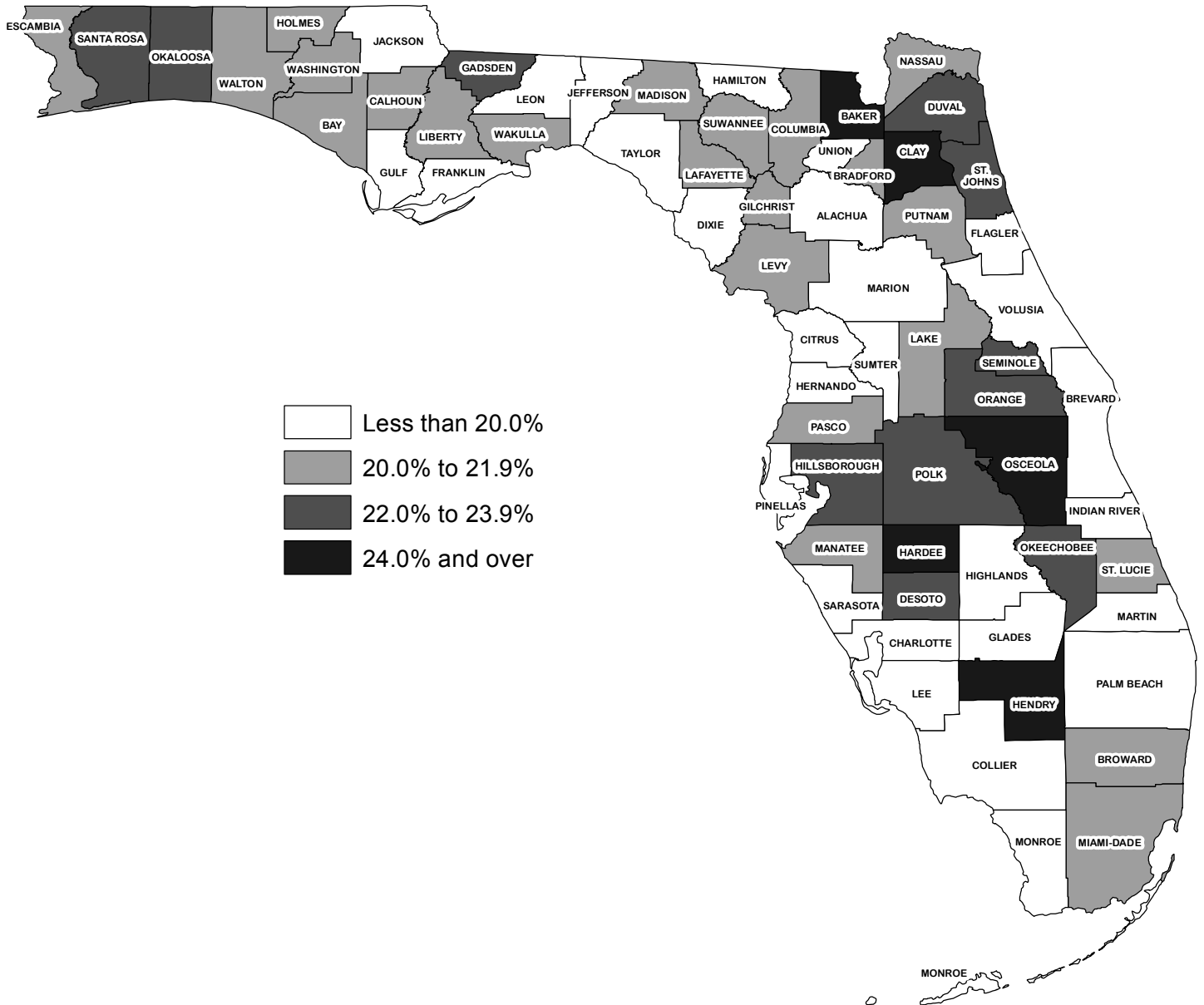


Table 14. Rank of Florida Counties by Percent of Population Aged 65 and Older, 2014

Rank	State and County	Aged 65 and Over		Rank	State and County	Aged 65 and Over	
		Percent	Number			Percent	Number
	FLORIDA	18.6	3,630,717				
1	Sumter	48.5	53,901	34	Okeechobee	17.8	7,109
2	Charlotte	35.7	58,770	35	Gulf	17.8	2,949
3	Citrus	33.3	46,916	36	Taylor	17.7	4,064
4	Highlands	32.8	32,766	37	Madison	17.6	3,396
5	Sarasota	32.7	126,476	38	St. Johns	17.4	36,184
6	Martin	28.5	42,410	39	Walton	17.4	10,382
7	Indian River	28.2	39,781	40	Jackson	17.1	8,602
8	Collier	27.5	92,752	41	Columbia	17.0	11,525
9	Marion	27.1	91,472	42	Bradford	16.9	4,608
10	Hernando	26.7	46,759	43	Calhoun	16.6	2,427
11	Flagler	25.9	25,625	44	Washington	16.5	4,121
12	Lake	24.7	76,439	45	Escambia	16.1	48,860
13	Manatee	24.6	83,460	46	Bay	16.0	27,387
14	Lee	24.3	158,687	47	Hamilton	15.9	2,279
15	Glades	23.2	2,988	48	Broward	15.7	282,497
16	Pinellas	23.1	215,214	49	Okaloosa	15.3	29,188
17	Palm Beach	22.6	307,619	50	Miami-Dade	15.1	394,848
18	Volusia	22.6	113,728	51	Gadsden	14.9	7,160
19	Brevard	21.7	120,124	52	Santa Rosa	14.1	22,520
20	Pasco	21.5	103,059	53	Seminole	13.8	60,340
21	Dixie	21.2	3,469	54	Lafayette	13.6	1,181
22	Levy	21.1	8,547	55	Hardee	13.5	3,741
23	St. Lucie	20.8	58,887	56	Clay	13.5	26,702
24	Putnam	20.3	14,751	57	Hillsborough	13.0	169,296
25	Monroe	20.1	14,898	58	Duval	12.8	113,947
26	Suwannee	19.6	8,642	59	Hendry	12.7	4,821
27	Polk	19.2	119,783	60	Alachua	12.7	31,766
28	Franklin	19.2	2,260	61	Wakulla	12.5	3,908
29	Gilchrist	19.0	3,201	62	Baker	12.2	3,305
30	Jefferson	19.0	2,772	63	Osceola	12.0	35,605
31	Nassau	18.8	14,136	64	Liberty	11.5	997
32	Holmes	18.6	3,733	65	Leon	11.4	31,937
33	DeSoto	18.1	6,236	66	Union	11.3	1,766
				67	Orange	10.7	131,038

Figure 4. Percent of Population Aged 65 and Older, 2014

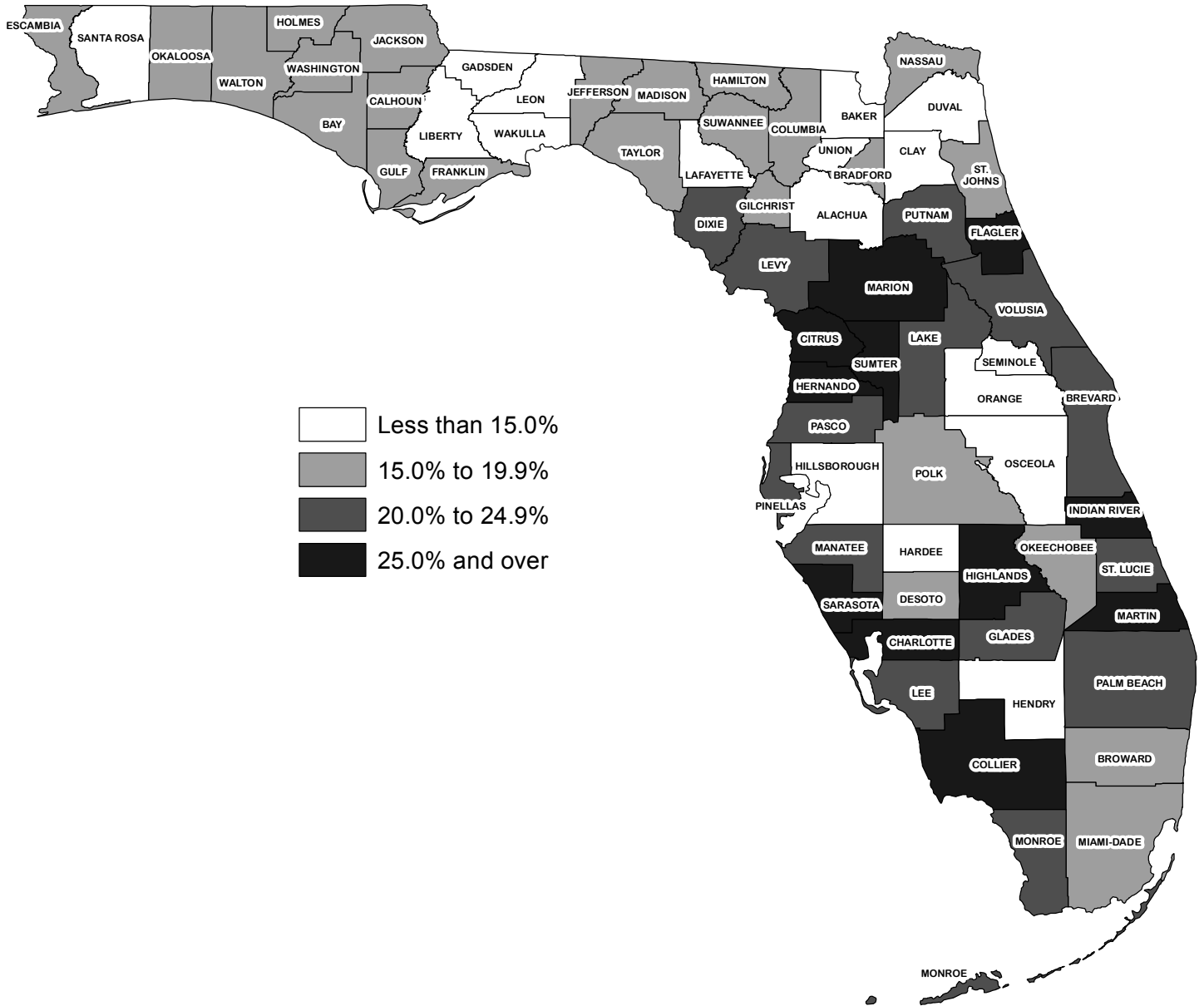


Table 15. Black Population of Florida Counties Ranked by Percent Black, 2014

Rank	State and County	Percent	Black Population	Total Population	Rank	State and County	Percent	Black Population	Total Population
	FLORIDA	17.2	3,361,274	19,507,369					
1	Gadsden	55.9	26,908	48,096	34	Hendry	12.9	4,893	37,895
2	Madison	39.4	7,604	19,303	35	Flagler	12.7	12,571	99,121
3	Jefferson	36.4	5,320	14,597	36	Seminole	12.6	55,192	437,086
4	Hamilton	33.6	4,827	14,351	37	Bay	11.7	19,984	170,781
5	Leon	32.1	90,328	281,292	38	Volusia	11.5	57,757	503,851
					39	Clay	11.4	22,577	197,403
6	Duval	31.6	281,430	890,066	40	Brevard	11.4	63,105	552,427
7	Broward	29.1	524,344	1,803,903	41	Pinellas	11.3	105,535	933,258
8	Jackson	28.1	14,099	50,231	42	Glades	11.3	1,458	12,852
9	Escambia	24.3	73,999	303,907	43	Lake	11.0	34,039	309,736
10	Orange	23.1	284,275	1,227,995	44	Okaloosa	10.8	20,525	190,666
					45	Highlands	10.2	10,191	99,818
11	Union	22.8	3,561	15,647	46	Levy	9.8	3,981	40,473
12	Alachua	21.6	54,058	250,730	47	Indian River	9.8	13,808	140,955
13	Taylor	21.0	4,823	22,932	48	Manatee	9.7	32,871	339,545
14	St. Lucie	20.7	58,498	282,821	49	Lee	9.3	60,894	653,485
15	Miami-Dade	19.4	507,154	2,613,692					
					50	Sumter	9.1	10,064	111,125
16	Bradford	19.3	5,268	27,323	51	Okeechobee	8.6	3,426	39,828
17	Palm Beach	18.6	253,230	1,360,238	52	Dixie	8.4	1,374	16,356
18	Columbia	18.6	12,598	67,826	53	Hardee	7.9	2,186	27,712
19	Liberty	18.4	1,599	8,668	54	Collier	7.4	24,902	336,783
20	Gulf	18.4	3,050	16,543					
					55	Nassau	6.7	5,037	75,321
21	Hillsborough	18.2	237,525	1,301,887	56	Charlotte	6.6	10,920	164,467
22	Putnam	16.7	12,082	72,523	57	Santa Rosa	6.4	10,241	159,785
23	Polk	15.9	98,872	623,174	58	Walton	6.3	3,770	59,793
24	Washington	15.8	3,938	24,959	59	Monroe	6.3	4,641	74,044
25	Wakulla	15.4	4,817	31,285					
					60	Holmes	6.2	1,244	20,025
26	Lafayette	14.7	1,282	8,696	61	Hernando	6.2	10,830	174,955
27	Franklin	14.4	1,704	11,794	62	St. Johns	6.1	12,704	207,443
28	Baker	14.4	3,889	26,991	63	Martin	5.9	8,766	148,585
29	Calhoun	14.2	2,073	14,592	64	Pasco	5.5	26,378	479,340
30	Osceola	13.9	41,095	295,553					
					65	Gilchrist	5.3	894	16,853
31	DeSoto	13.4	4,604	34,426	66	Sarasota	5.2	20,257	387,140
32	Marion	13.3	44,937	337,455	67	Citrus	3.3	4,687	140,798
33	Suwannee	13.1	5,781	44,168					

Figure 5. Black Population as Percent of Total Population, 2014

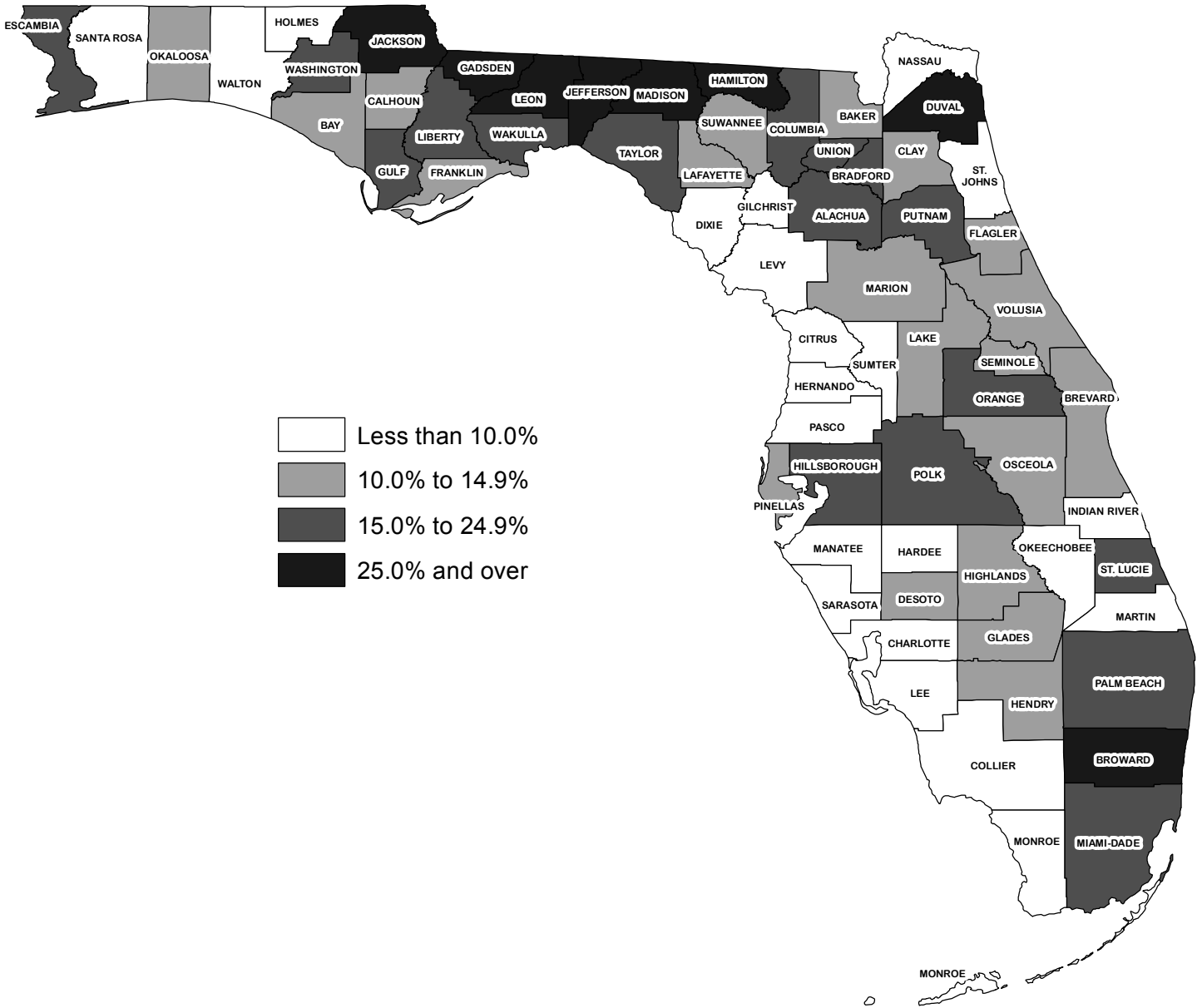


Table 16. Hispanic Population of Florida Counties Ranked by Percent Hispanic, 2014

Rank	State and County	Percent	Hispanic Population	Total Population	Rank	State and County	Percent	Hispanic Population	Total Population
	FLORIDA	23.9	4,667,216	19,507,369					
1	Miami-Dade	66.5	1,737,713	2,613,692	34	Sarasota	9.0	34,790	387,140
2	Hendry	53.9	20,418	37,895	35	Pinellas	8.9	83,015	933,258
3	Osceola	48.1	142,096	295,553	36	Alachua	8.8	22,094	250,730
4	Hardee	43.5	12,061	27,712	37	Clay	8.6	16,905	197,403
5	DeSoto	33.1	11,379	34,426	38	Duval	8.5	75,506	890,066
6	Orange	28.8	354,223	1,227,995	39	Okaloosa	8.2	15,653	190,666
7	Collier	27.4	92,433	336,783	40	Levy	7.9	3,215	40,473
8	Broward	26.7	482,232	1,803,903	41	Liberty	6.6	575	8,668
9	Hillsborough	26.5	345,533	1,301,887	42	Charlotte	6.5	10,695	164,467
10	Okeechobee	25.3	10,088	39,828	43	Gilchrist	6.0	1,017	16,853
11	Glades	23.9	3,069	12,852	44	Walton	6.0	3,584	59,793
12	Monroe	21.2	15,701	74,044	45	St. Johns	5.9	12,246	207,443
13	Palm Beach	20.5	279,060	1,360,238	46	Leon	5.8	16,365	281,292
14	Lee	20.4	133,000	653,485	47	Sumter	5.8	6,467	111,125
15	Polk	19.8	123,202	623,174	48	Bay	5.5	9,453	170,781
16	Highlands	18.6	18,576	99,818	49	Calhoun	5.4	788	14,592
17	Seminole	18.4	80,378	437,086	50	Escambia	5.3	16,070	303,907
18	St. Lucie	17.6	49,739	282,821	51	Columbia	5.2	3,517	67,826
19	Manatee	16.3	55,290	339,545	52	Santa Rosa	5.2	8,249	159,785
20	Lake	13.4	41,441	309,736	53	Madison	5.1	983	19,303
21	Martin	13.4	19,876	148,585	54	Union	5.0	775	15,647
22	Lafayette	13.0	1,133	8,696	55	Citrus	4.9	6,930	140,798
23	Pasco	13.0	62,510	479,340	56	Franklin	4.8	561	11,794
24	Indian River	12.5	17,564	140,955	57	Jackson	4.7	2,355	50,231
25	Marion	12.0	40,617	337,455	58	Gulf	4.6	769	16,543
26	Volusia	12.0	60,463	503,851	59	Jefferson	4.3	626	14,597
27	Hernando	10.8	18,859	174,955	60	Nassau	3.9	2,906	75,321
28	Putnam	10.3	7,440	72,523	61	Wakulla	3.7	1,166	31,285
29	Suwannee	9.9	4,383	44,168	62	Taylor	3.6	837	22,932
30	Gadsden	9.7	4,643	48,096	63	Bradford	3.4	920	27,323
31	Flagler	9.5	9,408	99,121	64	Dixie	3.3	546	16,356
32	Hamilton	9.3	1,335	14,351	65	Washington	3.0	746	24,959
33	Brevard	9.1	50,014	552,427	66	Holmes	2.3	466	20,025
					67	Baker	2.0	549	26,991

Figure 6. Hispanic Population as Percent of Total Population, 2014

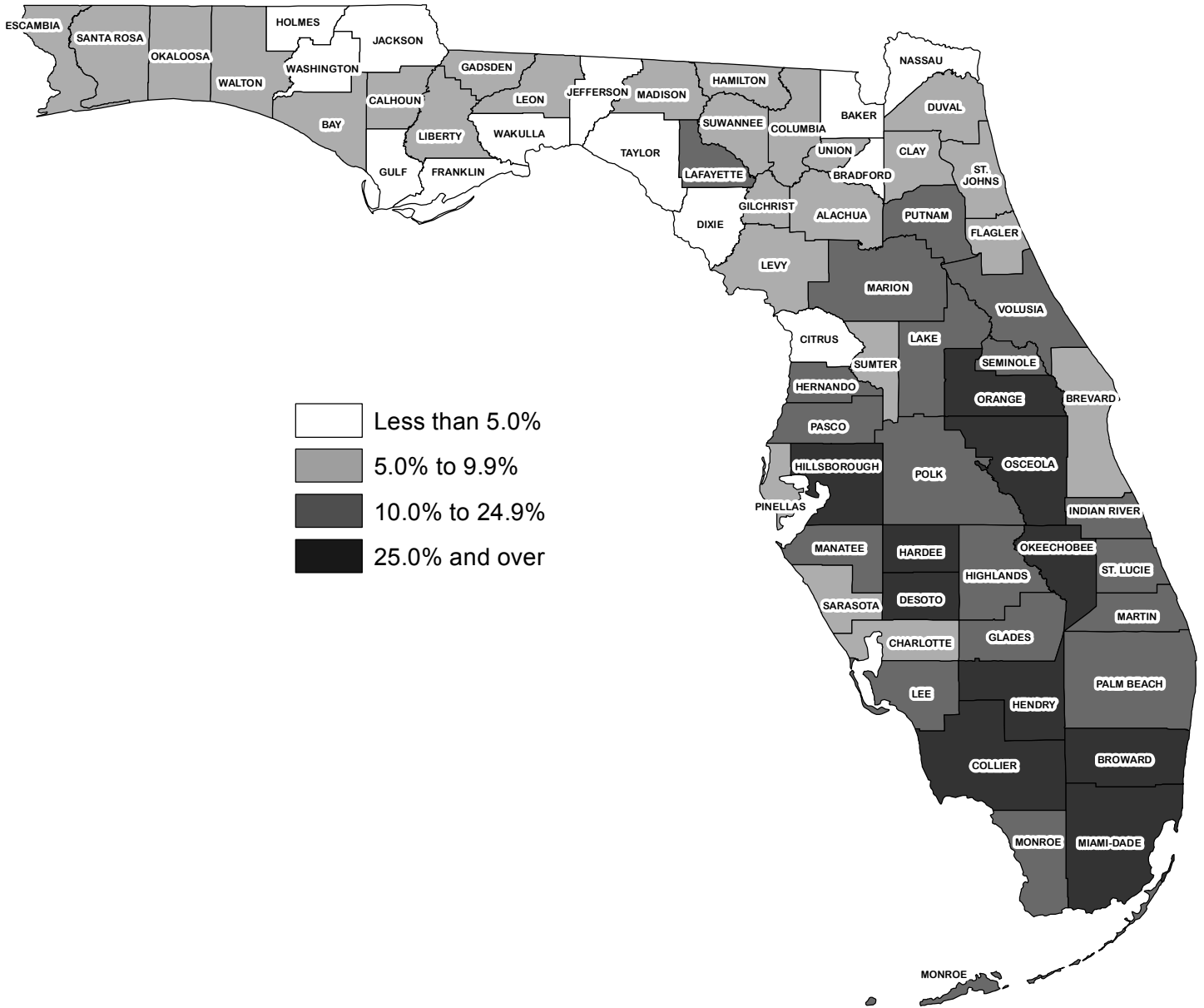


Table 17. Population per Square Mile for Florida Counties, 2000 to 2015

State and County	Land area in 2010 (sq. miles)	Population Per Square Mile			Rank		
		2015	2010	2000	2015	2010	2000
FLORIDA*	53,625	364	351	298	(X)	(X)	(X)
Pinellas	274	3,451	3,347	3,366	1	1	1
Broward	1,210	1,510	1,445	1,342	2	2	2
Seminole	309	1,432	1,367	1,181	3	3	4
Miami-Dade*	1,898	1,398	1,316	1,188	4	4	3
Orange	903	1,386	1,268	992	5	5	6
Hillsborough	1,020	1,299	1,205	979	6	6	7
Duval	762	1,188	1,134	1,022	7	7	5
Lee	785	849	789	562	8	8	10
Sarasota	556	705	683	586	9	9	8
Palm Beach	1,970	700	670	574	10	10	9
Pasco	747	653	622	462	11	11	12
Brevard	1,016	553	535	469	12	12	11
St. Lucie	572	503	486	337	13	13	17
Manatee	743	470	435	355	14	16	16
Escambia	656	468	453	448	15	14	13
Volusia	1,101	464	449	403	16	15	14
Leon	667	427	413	359	17	17	15
Hernando	473	374	366	277	18	18	18
St. Johns	601	356	316	205	19	21	26
Polk	1,798	352	335	269	20	19	19
Lake*	938	337	317	224	21	20	24
Clay	604	333	316	233	22	22	22
Alachua	875	291	283	249	23	23	20
Indian River	503	285	274	225	24	24	23
Martin	543	276	269	233	25	25	21
Charlotte	680	246	235	208	26	27	25
Citrus	582	243	243	203	27	26	27
Osceola	1,327	232	202	130	28	30	31
Bay	758	229	223	195	29	28	28
Marion*	1,585	215	209	163	30	29	30
Sumter	547	211	171	98	31	33	35
Flagler	485	209	197	103	32	31	34
Okaloosa	930	206	194	183	33	32	29
Collier	1,998	172	161	126	34	34	32
Santa Rosa	1,012	161	150	116	35	35	33

Table 17. Population per Square Mile for Florida Counties, 2000 to 2015

(Continued)

State and County	Land area in 2010 (sq. miles)	Population Per Square Mile			Rank		
		2015	2010	2000	2015	2010	2000
Nassau	649	118	113	89	36	36	37
Putnam	728	100	102	97	37	37	36
Highlands	1,017	99	97	86	38	38	40
Gadsden	516	94	90	87	39	40	39
Bradford	294	93	97	89	40	39	38
Columbia	798	85	85	71	41	41	42
Monroe	983	75	74	81	42	42	41
Union	244	65	64	55	43	43	43
Suwannee	689	65	60	51	44	44	45
Walton	1,038	58	53	39	45	47	50
Jackson	918	55	54	51	46	46	44
DeSoto	637	55	55	51	47	45	46
Okeechobee	769	52	52	47	48	48	47
Wakulla	606	52	51	38	49	49	53
Gilchrist	350	48	48	41	50	50	49
Baker	585	46	46	38	51	51	52
Hardee	638	43	43	42	52	52	48
Washington	583	43	43	36	53	53	54
Holmes	479	42	42	39	54	54	51
Levy	1,118	36	36	31	55	55	56
Hendry	1,153	33	34	31	56	56	55
Gulf	564	29	28	26	57	58	59
Hamilton	514	28	29	26	58	57	58
Madison	696	28	28	27	59	59	57
Calhoun	567	26	26	23	60	60	60
Jefferson	598	24	25	22	61	61	61
Dixie	705	23	23	20	62	62	62
Franklin	535	22	22	18	63	64	64
Taylor	1,043	22	22	18	64	63	63
Glades	806	16	16	13	65	66	65
Lafayette	543	16	16	13	66	65	66
Liberty	836	10	10	8	67	67	67

* Includes US Census Bureau corrections as of February 11, 2014.

Figure 7. Population per Square Mile, 2015

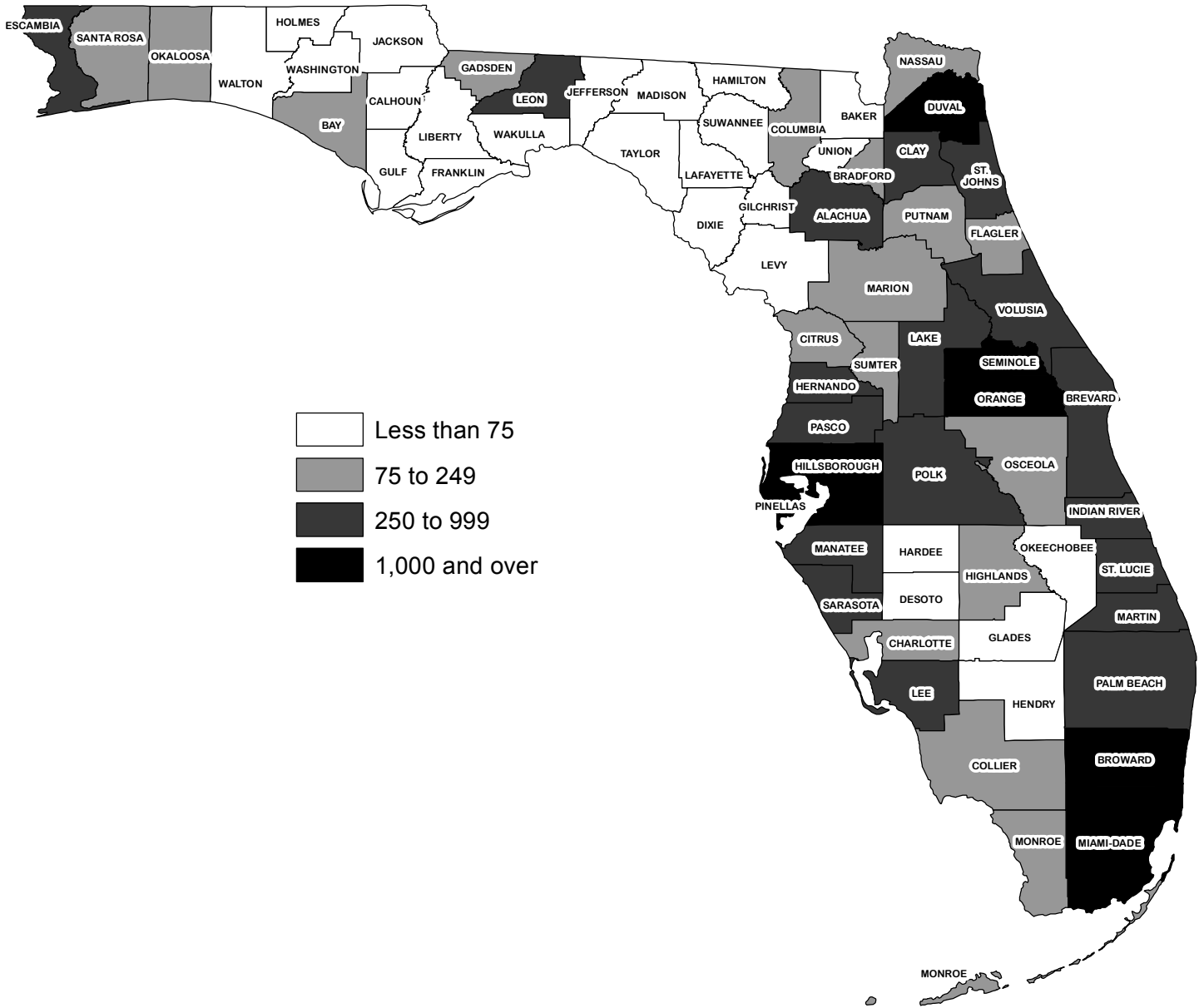


Table 18. Location of Florida Cities

City	County	City	County
Alachua	Alachua	Bunnell	Flagler
Alford	Jackson	Bushnell	Sumter
Altamonte Springs	Seminole	Callahan	Nassau
Altha	Calhoun	Callaway	Bay
Anna Maria	Manatee	Campbellton	Jackson
Apalachicola	Franklin	Cape Canaveral	Brevard
Apopka	Orange	Cape Coral	Lee
Arcadia	DeSoto	Carrabelle	Franklin
Archer	Alachua	Caryville	Washington
Astatula	Lake	Casselberry	Seminole
Atlantic Beach	Duval	Cedar Key	Levy
Atlantis	Palm Beach	Center Hill	Sumter
Auburndale	Polk	Century	Escambia
Aventura	Miami-Dade	Chattahoochee	Gadsden
Avon Park	Highlands	Chiefland	Levy
Bal Harbour	Miami-Dade	ChIPLEY	Washington
Baldwin	Duval	Cinco Bayou	Okaloosa
Bartow	Polk	Clearwater	Pinellas
Bascom	Jackson	Clermont	Lake
Bay Harbor Islands	Miami-Dade	Clewiston	Hendry
Bay Lake	Orange	Cloud Lake	Palm Beach
Bell	Gilchrist	Cocoa	Brevard
Belle Glade	Palm Beach	Cocoa Beach	Brevard
Belle Isle	Orange	Coconut Creek	Broward
Belleair	Pinellas	Coleman	Sumter
Belleair Beach	Pinellas	Cooper City	Broward
Belleair Bluffs	Pinellas	Coral Gables	Miami-Dade
Belleair Shore	Pinellas	Coral Springs	Broward
Bellevue	Marion	Cottdale	Jackson
Beverly Beach	Flagler	Crescent City	Putnam
Biscayne Park	Miami-Dade	Crestview	Okaloosa
Blountstown	Calhoun	Cross City	Dixie
Boca Raton	Palm Beach	Crystal River	Citrus
Bonifay	Holmes	Cutler Bay	Miami-Dade
Bonita Springs	Lee	Dade City	Pasco
Bowling Green	Hardee	Dania Beach	Broward
Boynton Beach	Palm Beach	Davenport	Polk
Bradenton	Manatee	Davie	Broward
Bradenton Beach	Manatee	Daytona Beach	Volusia
Branford	Suwannee	Daytona Beach Shores	Volusia
Briny Breezes	Palm Beach	DeBary	Volusia
Bristol	Liberty	Deerfield Beach	Broward
Bronson	Levy	DeFuniak Springs	Walton
Brooker	Bradford	DeLand	Volusia
Brooksville	Hernando	Delray Beach	Palm Beach

Table 18. Location of Florida Cities

(Continued)

City	County	City	County
Deltona	Volusia	Groveland	Lake
Destin	Okaloosa	Gulf Breeze	Santa Rosa
Doral	Miami-Dade	Gulf Stream	Palm Beach
Dundee	Polk	Gulfport	Pinellas
Dunedin	Pinellas	Haines City	Polk
Dunnellon	Marion	Hallandale Beach	Broward
Eagle Lake	Polk	Hampton	Bradford
Eatonville	Orange	Hastings	St. Johns
Ebro	Washington	Havana	Gadsden
Edgewater	Volusia	Haverhill	Palm Beach
Edgewood	Orange	Hawthorne	Alachua
El Portal	Miami-Dade	Hialeah	Miami-Dade
Estero*	Lee	Hialeah Gardens	Miami-Dade
Esto	Holmes	High Springs	Alachua
Eustis	Lake	Highland Beach	Palm Beach
Everglades	Collier	Highland Park	Polk
Fanning Springs	Gilchrist/Levy	Hillcrest Heights	Polk
Fellsmere	Indian River	Hilliard	Nassau
Fernandina Beach	Nassau	Hillsboro Beach	Broward
Flagler Beach	Flagler/Volusia	Holly Hill	Volusia
Florida City	Miami-Dade	Hollywood	Broward
Fort Lauderdale	Broward	Holmes Beach	Manatee
Fort Meade	Polk	Homestead	Miami-Dade
Fort Myers	Lee	Horseshoe Beach	Dixie
Fort Myers Beach	Lee	Howey-in-the-Hills	Lake
Fort Pierce	St. Lucie	Hypoluxo	Palm Beach
Fort Walton Beach	Okaloosa	Indianalantic	Brevard
Fort White	Columbia	Indian Creek	Miami-Dade
Freeport	Walton	Indian Harbour Beach	Brevard
Frostproof	Polk	Indian River Shores	Indian River
Fruitland Park	Lake	Indian Rocks Beach	Pinellas
Gainesville	Alachua	Indian Shores	Pinellas
Glen Ridge	Palm Beach	Inglis	Levy
Glen St. Mary	Baker	Interlachen	Putnam
Golden Beach	Miami-Dade	Inverness	Citrus
Golf	Palm Beach	Islamorada, Village of Islands	Monroe
Graceville	Jackson	Islandia**	Miami-Dade
Grand Ridge	Jackson	Jacksonville	Duval
Grant-Valkaria	Brevard	Jacksonville Beach	Duval
Green Cove Springs	Clay	Jacob City	Jackson
Greenacres	Palm Beach	Jasper	Hamilton
Greensboro	Gadsden	Jay	Santa Rosa
Greenville	Madison	Jennings	Hamilton
Greenwood	Jackson	Juno Beach	Palm Beach
Gretna	Gadsden	Jupiter	Palm Beach

Table 18. Location of Florida Cities

(Continued)

City	County	City	County
Jupiter Inlet Colony	Palm Beach	Malabar	Brevard
Jupiter Island	Martin	Malone	Jackson
Kenneth City	Pinellas	Manalapan	Palm Beach
Key Biscayne	Miami-Dade	Mangonia Park	Palm Beach
Key Colony Beach	Monroe	Marathon	Monroe
Key West	Monroe	Marco Island	Collier
Keystone Heights	Clay	Margate	Broward
Kissimmee	Osceola	Marianna	Jackson
La Crosse	Alachua	Marineland	Flagler/St. Johns
LaBelle	Hendry	Mary Esther	Okaloosa
Lady Lake	Lake	Mascotte	Lake
Lake Alfred	Polk	Mayo	Lafayette
Lake Buena Vista	Orange	McIntosh	Marion
Lake Butler	Union	Medley	Miami-Dade
Lake City	Columbia	Melbourne	Brevard
Lake Clarke Shores	Palm Beach	Melbourne Beach	Brevard
Lake Hamilton	Polk	Melbourne Village	Brevard
Lake Helen	Volusia	Mexico Beach	Bay
Lakeland	Polk	Miami	Miami-Dade
Lake Mary	Seminole	Miami Beach	Miami-Dade
Lake Park	Palm Beach	Miami Gardens	Miami-Dade
Lake Placid	Highlands	Miami Lakes	Miami-Dade
Lake Wales	Polk	Miami Shores	Miami-Dade
Lake Worth	Palm Beach	Miami Springs	Miami-Dade
Lantana	Palm Beach	Micanopy	Alachua
Largo	Pinellas	Midway	Gadsden
Lauderdale Lakes	Broward	Milton	Santa Rosa
Lauderdale-By-The-Sea	Broward	Minneola	Lake
Lauderhill	Broward	Miramar	Broward
Laurel Hill	Okaloosa	Monticello	Jefferson
Lawtey	Bradford	Montverde	Lake
Layton	Monroe	Moore Haven	Glades
Lazy Lake	Broward	Mount Dora	Lake
Lee	Madison	Mulberry	Polk
Leesburg	Lake	Naples	Collier
Lighthouse Point	Broward	Neptune Beach	Duval
Live Oak	Suwannee	New Port Richey	Pasco
Longboat Key	Manatee/Sarasota	New Smyrna Beach	Volusia
Longwood	Seminole	Newberry	Alachua
Loxahatchee Groves	Palm Beach	Niceville	Okaloosa
Lynn Haven	Bay	Noma	Holmes
Macclenny	Baker	North Bay Village	Miami-Dade
Madeira Beach	Pinellas	North Lauderdale	Broward
Madison	Madison	North Miami	Miami-Dade
Maitland	Orange	North Miami Beach	Miami-Dade

Table 18. Location of Florida Cities

(Continued)

City	County	City	County
North Palm Beach	Palm Beach	Plantation	Broward
North Port	Sarasota	Polk City	Polk
North Redington Beach	Pinellas	Pomona Park	Putnam
Oak Hill	Volusia	Pompano Beach	Broward
Oakland	Orange	Ponce de Leon	Holmes
Oakland Park	Broward	Ponce Inlet	Volusia
Ocala	Marion	Port Orange	Volusia
Ocean Breeze	Martin	Port Richey	Pasco
Ocean Ridge	Palm Beach	Port St. Joe	Gulf
Ocoee	Orange	Port St. Lucie	St. Lucie
Okeechobee	Okeechobee	Punta Gorda	Charlotte
Oldsmar	Pinellas	Quincy	Gadsden
Opa-locka	Miami-Dade	Raiford	Union
Orange City	Volusia	Reddick	Marion
Orange Park	Clay	Redington Beach	Pinellas
Orchid	Indian River	Redington Shores	Pinellas
Orlando	Orange	Riviera Beach	Palm Beach
Ormond Beach	Volusia	Rockledge	Brevard
Otter Creek	Levy	Royal Palm Beach	Palm Beach
Oviedo	Seminole	Safety Harbor	Pinellas
Pahokee	Palm Beach	St. Augustine	St. Johns
Palatka	Putnam	St. Augustine Beach	St. Johns
Palm Bay	Brevard	St. Cloud	Osceola
Palm Beach	Palm Beach	St. Leo	Pasco
Palm Beach Gardens	Palm Beach	St. Lucie Village	St. Lucie
Palm Beach Shores	Palm Beach	St. Marks	Wakulla
Palm Coast	Flagler	St. Pete Beach	Pinellas
Palm Shores	Brevard	St. Petersburg	Pinellas
Palm Springs	Palm Beach	San Antonio	Pasco
Palmetto	Manatee	Sanford	Seminole
Palmetto Bay	Miami-Dade	Sanibel	Lee
Panama City	Bay	Sarasota	Sarasota
Panama City Beach	Bay	Satellite Beach	Brevard
Parker	Bay	Sea Ranch Lakes	Broward
Parkland	Broward	Sebastian	Indian River
Paxton	Walton	Sebring	Highlands
Pembroke Park	Broward	Seminole	Pinellas
Pembroke Pines	Broward	Sewall's Point	Martin
Penney Farms	Clay	Shalimar	Okaloosa
Pensacola	Escambia	Sneads	Jackson
Perry	Taylor	Sopchoppy	Wakulla
Pierson	Volusia	South Bay	Palm Beach
Pinecrest	Miami-Dade	South Daytona	Volusia
Pinellas Park	Pinellas	South Miami	Miami-Dade
Plant City	Hillsborough	South Palm Beach	Palm Beach

Table 18. Location of Florida Cities

(Continued)

City	County	City	County
South Pasadena	Pinellas	Welaka	Putnam
Southwest Ranches	Broward	Wellington	Palm Beach
Springfield	Bay	West Melbourne	Brevard
Starke	Bradford	West Miami	Miami-Dade
Stuart	Martin	West Palm Beach	Palm Beach
Sunny Isles Beach	Miami-Dade	West Park	Broward
Sunrise	Broward	Weston	Broward
Surfside	Miami-Dade	Westville	Holmes
Sweetwater	Miami-Dade	Wewahitchka	Gulf
Tallahassee	Leon	White Springs	Hamilton
Tamarac	Broward	Wildwood	Sumter
Tampa	Hillsborough	Williston	Levy
Tarpon Springs	Pinellas	Wilton Manors	Broward
Tavares	Lake	Windermere	Orange
Temple Terrace	Hillsborough	Winter Garden	Orange
Tequesta	Palm Beach	Winter Haven	Polk
Titusville	Brevard	Winter Park	Orange
Treasure Island	Pinellas	Winter Springs	Seminole
Trenton	Gilchrist	Worthington Springs	Union
Umatilla	Lake	Yankeetown	Levy
Valparaiso	Okaloosa	Zephyrhills	Pasco
Venice	Sarasota	Zolfo Springs	Hardee
Vernon	Washington		
Vero Beach	Indian River		
Virginia Gardens	Miami-Dade		
Waldo	Alachua		
Wauchula	Hardee		
Wausau	Washington		
Webster	Sumter		
Weeki Wachee	Hernando		

* The Village of Estero was incorporated on December 31, 2014.

** The City of Islandia was disincorporated as of March 6, 2012.

UF | **Bureau of Economic and Business Research**
College of Liberal Arts and Sciences
UNIVERSITY of FLORIDA

Ayers Technological Plaza
720 SW 2nd Ave, Suite 150
P.O. Box 117148
Gainesville, Florida 32611-7148
phone: 352-392-0171
fax: 352-392-4739
www.bebr.ufl.edu

BEBR